

RRM2 Antibody (monoclonal) (M01)**Mouse monoclonal antibody raised against a partial recombinant RRM2.****Catalog # AT3730a****Specification**

RRM2 Antibody (monoclonal) (M01) - Product Information

Application	IF, IP, WB, IHC, E
Primary Accession	P31350
Other Accession	NM_001034
Reactivity	Human
Host	Mouse
Clonality	Monoclonal
Isotype	IgG1 Kappa
Calculated MW	44878

RRM2 Antibody (monoclonal) (M01) - Additional Information**Gene ID** 6241**Other Names**

Ribonucleoside-diphosphate reductase subunit M2, Ribonucleotide reductase small chain, Ribonucleotide reductase small subunit, RRM2, RR2

Target/Specificity

RRM2 (NP_001025, 1 a.a. ~ 110 a.a) partial recombinant protein with GST tag. MW of the GST tag alone is 26 KDa.

Dilution

WB~~1:500~1000

Format

Clear, colorless solution in phosphate buffered saline, pH 7.2 .

Storage

Store at -20°C or lower. Aliquot to avoid repeated freezing and thawing.

Precautions

RRM2 Antibody (monoclonal) (M01) is for research use only and not for use in diagnostic or therapeutic procedures.

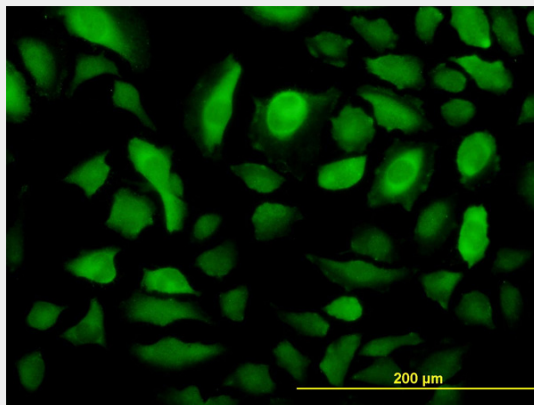
RRM2 Antibody (monoclonal) (M01) - Protocols

Provided below are standard protocols that you may find useful for product applications.

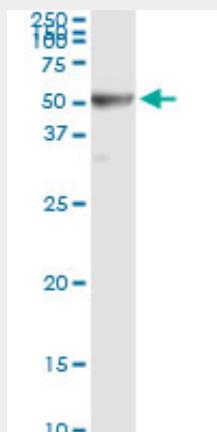
- [Western Blot](#)
- [Blocking Peptides](#)
- [Dot Blot](#)

- [Immunohistochemistry](#)
- [Immunofluorescence](#)
- [Immunoprecipitation](#)
- [Flow Cytometry](#)
- [Cell Culture](#)

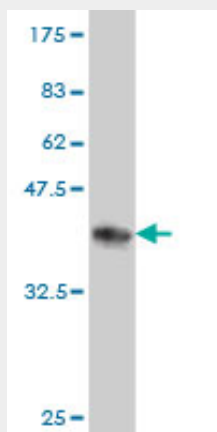
RRM2 Antibody (monoclonal) (M01) - Images



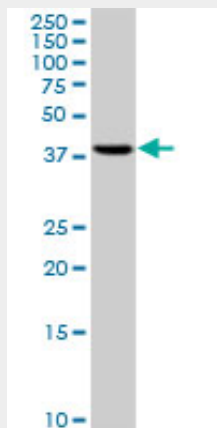
Immunofluorescence of monoclonal antibody to RRM2 on HeLa cell. [antibody concentration 10 ug/ml]



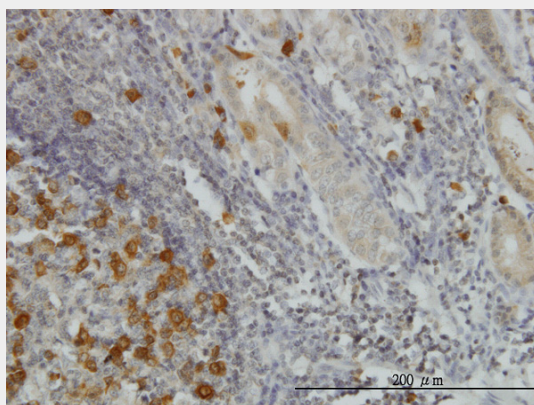
Immunoprecipitation of RRM2 transfected lysate using anti-RRM2 monoclonal antibody and Protein A Magnetic Bead ([U0007](#)), and immunoblotted with RRM2 MaxPab rabbit polyclonal antibody.



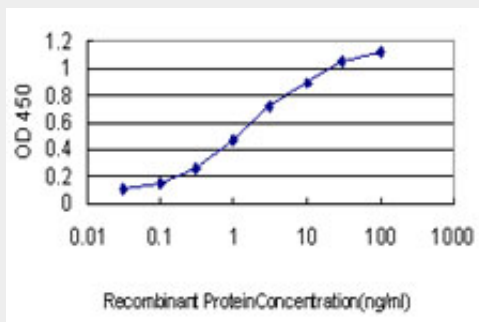
Antibody Reactive Against Recombinant Protein. Western Blot detection against Immunogen (37.84 KDa) .



RRM2 monoclonal antibody (M01), clone 1E1. Western Blot analysis of RRM2 expression in HepG2 (Cat # AT3730a)



Immunoperoxidase of monoclonal antibody to RRM2 on formalin-fixed paraffin-embedded human stomach. [antibody concentration 1.5 ug/ml]



Detection limit for recombinant GST tagged RRM2 is approximately 0.03ng/ml as a capture antibody.

RRM2 Antibody (monoclonal) (M01) - Background

This gene encodes one of two non-identical subunits for ribonucleotide reductase. This reductase catalyzes the formation of deoxyribonucleotides from ribonucleotides. Synthesis of the encoded protein (M2) is regulated in a cell-cycle dependent fashion. Transcription from this gene can initiate from alternative promoters, which results in two isoforms that differ in the lengths of their N-termini. Related pseudogenes have been identified on chromosomes 1 and X.

RRM2 Antibody (monoclonal) (M01) - References

1. RRM1 maintains centrosomal integrity via CHK1 and CDK1 signaling during replication stress. Kim SH, Park ER, Joo HY, Shen YN, Hong SH, Kim CH, Singh R, Lee KH, Shin HJ. *Cancer Lett.* 2014 Jan 14. pii: S0304-3835(14)00014-7. doi: 10.1016/j.canlet.2013.12.031. 2. KRAS-mediated Up-regulation of RRM2 Expression Is Essential for the Proliferation of Colorectal Cancer Cell Lines. Yoshida Y, Tsunoda T, Doi K, Tanaka Y, Fujimoto T, Machida T, Ota T, Koyanagi M, Takashima Y, Sasazuki T, Kuroki M, Iwasaki A, Shirasawa S. *Anticancer Research* July 2011 vol. 31 no. 7 2535-2539. 3. Epstein-Barr virus episome stability is coupled to a delay in replication timing. Zhou J, Snyder A, Lieberman PM. *J Virol.* 2009 Mar;83(5):2154-62. Epub 2008 Dec 10. 4. Quantitative phosphoproteome profiling of Wnt3a mediated signaling network: indicating the involvement of ribonucleoside-diphosphate reductase M2 subunit phosphorylation at residue serine-20 in canonical Wnt signal transduction. Tang LY, Deng N, Wang LS, Dai J, Wang ZL, Jiang XS, Li SJ, Li L, Sheng QH, Wu DQ, Li L, Zeng R. *Mol Cell Proteomics.* 2007 Nov;6(11):1952-67. Epub 2007 Aug 12.