

**RSU1 Antibody (monoclonal) (M01)**

Mouse monoclonal antibody raised against a full length recombinant RSU1.

Catalog # AT3732a

**Specification**

---

**RSU1 Antibody (monoclonal) (M01) - Product Information**

Application	WB, E
Primary Accession	<a href="#">Q15404</a>
Other Accession	<a href="#">BC005993</a>
Reactivity	Human
Host	mouse
Clonality	Monoclonal
Isotype	IgG1 Kappa
Calculated MW	31540

**RSU1 Antibody (monoclonal) (M01) - Additional Information**

**Gene ID** 6251

**Other Names**

Ras suppressor protein 1, RSP-1, Rsu-1, RSU1, RSP1

**Target/Specificity**

RSU1 (AAH05993, 1 a.a. ~ 277 a.a) full-length recombinant protein with GST tag. MW of the GST tag alone is 26 KDa.

**Dilution**

WB~~1:500~1000

**Format**

Clear, colorless solution in phosphate buffered saline, pH 7.2 .

**Storage**

Store at -20°C or lower. Aliquot to avoid repeated freezing and thawing.

**Precautions**

RSU1 Antibody (monoclonal) (M01) is for research use only and not for use in diagnostic or therapeutic procedures.

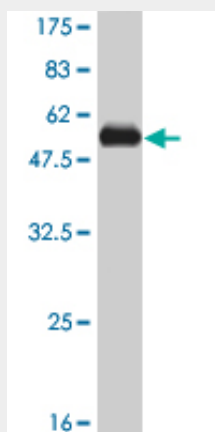
**RSU1 Antibody (monoclonal) (M01) - Protocols**

Provided below are standard protocols that you may find useful for product applications.

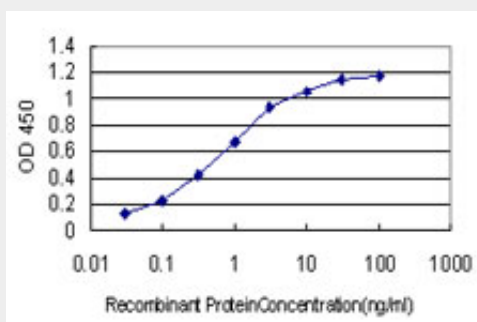
- [Western Blot](#)
- [Blocking Peptides](#)
- [Dot Blot](#)
- [Immunohistochemistry](#)

- [Immunofluorescence](#)
- [Immunoprecipitation](#)
- [Flow Cytometry](#)
- [Cell Culture](#)

### RSU1 Antibody (monoclonal) (M01) - Images



Antibody Reactive Against Recombinant Protein. Western Blot detection against Immunogen (56.21 kDa) .



Detection limit for recombinant GST tagged RSU1 is approximately 0.03ng/ml as a capture antibody.

### RSU1 Antibody (monoclonal) (M01) - Background

This gene encodes a protein that is involved in the Ras signal transduction pathway, growth inhibition, and nerve-growth factor induced differentiation processes, as determined in mouse and human cell line studies. In mouse, the encoded protein was initially isolated based on its ability to inhibit v-Ras transformation. Multiple alternatively spliced transcript variants for this gene have been reported; one of these variants was found only in glioma tumors.

### RSU1 Antibody (monoclonal) (M01) - References

Personalized smoking cessation: interactions between nicotine dose, dependence and quit-success genotype score. Rose JE, et al. Mol Med, 2010 Jul-Aug. PMID 20379614. Proteomic analysis reveals Hrs ubiquitin-interacting motif-mediated ubiquitin signaling in multiple cellular processes. Pridgeon JW, et al. FEBS J, 2009 Jan. PMID 19019082. The Rsu-1-PINCH1-ILK complex is regulated by Ras activation in tumor cells. Dougherty GW, et al. Eur J Cell Biol, 2008 Sep. PMID 18436335. Large-scale mapping of human protein-protein interactions by mass spectrometry. Ewing RM, et al. Mol Syst Biol, 2007. PMID 17353931. A scan of chromosome 10 identifies a novel locus showing strong association with late-onset Alzheimer disease. Grupe A, et al. Am J Hum Genet, 2006 Jan. PMID 16385451.