

**S100A10 Antibody (monoclonal) (M01)****Mouse monoclonal antibody raised against a full length recombinant S100A10.****Catalog # AT3751a****Specification**

---

**S100A10 Antibody (monoclonal) (M01) - Product Information**

Application	IF, WB, E
Primary Accession	<a href="#">P60903</a>
Other Accession	<a href="#">BC015973</a>
Reactivity	Human
Host	mouse
Clonality	Monoclonal
Isotype	IgG1 Kappa
Calculated MW	11203

**S100A10 Antibody (monoclonal) (M01) - Additional Information****Gene ID** 6281**Other Names**

Protein S100-A10, Calpactin I light chain, Calpactin-1 light chain, Cellular ligand of annexin II, S100 calcium-binding protein A10, p10 protein, p11, S100A10, ANX2LG, CAL1L, CLP11

**Target/Specificity**

S100A10 (AAH15973, 1 a.a. ~ 97 a.a) full-length recombinant protein with GST tag. MW of the GST tag alone is 26 KDa.

**Dilution**

WB~~1:500~1000

**Format**

Clear, colorless solution in phosphate buffered saline, pH 7.2 .

**Storage**

Store at -20°C or lower. Aliquot to avoid repeated freezing and thawing.

**Precautions**

S100A10 Antibody (monoclonal) (M01) is for research use only and not for use in diagnostic or therapeutic procedures.

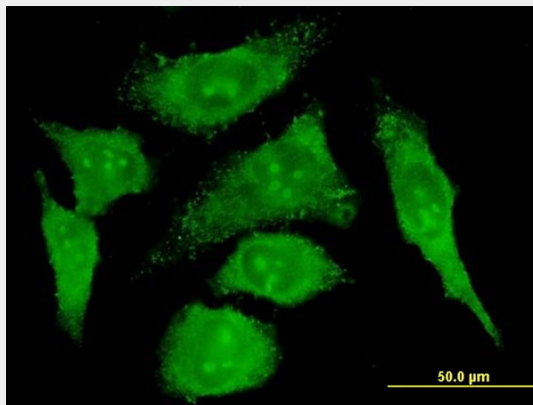
**S100A10 Antibody (monoclonal) (M01) - Protocols**

Provided below are standard protocols that you may find useful for product applications.

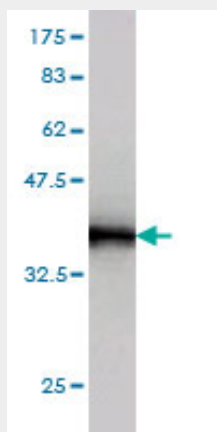
- [Western Blot](#)
- [Blocking Peptides](#)
- [Dot Blot](#)

- [Immunohistochemistry](#)
- [Immunofluorescence](#)
- [Immunoprecipitation](#)
- [Flow Cytometry](#)
- [Cell Culture](#)

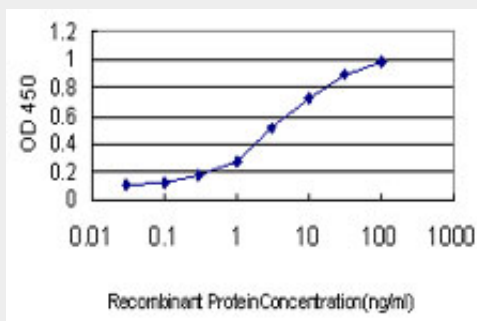
### **S100A10 Antibody (monoclonal) (M01) - Images**



Immunofluorescence of monoclonal antibody to S100A10 on HeLa cell . [antibody concentration 10 ug/ml]



Antibody Reactive Against Recombinant Protein. Western Blot detection against Immunogen (36.41 KDa) .



Detection limit for recombinant GST tagged S100A10 is approximately 0.1ng/ml as a capture antibody.

### **S100A10 Antibody (monoclonal) (M01) - Background**

The protein encoded by this gene is a member of the S100 family of proteins containing 2 EF-hand calcium-binding motifs. S100 proteins are localized in the cytoplasm and/or nucleus of a wide range of cells, and involved in the regulation of a number of cellular processes such as cell cycle progression and differentiation. S100 genes include at least 13 members which are located as a cluster on chromosome 1q21. This protein may function in exocytosis and endocytosis.

#### **S100A10 Antibody (monoclonal) (M01) - References**

Regulation of cellular actin architecture by S100A10. Jung MJ, et al. Exp Cell Res, 2010 Apr 15. PMID 20100475. Regulation of CFTR function by annexin A2-S100A10 complex in health and disease. Muimo R. Gen Physiol Biophys, 2009. PMID 20093721. The variant rs1867277 in FOXE1 gene confers thyroid cancer susceptibility through the recruitment of USF1/USF2 transcription factors. Landa I, et al. PLoS Genet, 2009 Sep. PMID 19730683. Variation in genes of the epidermal differentiation complex in German atopic dermatitis patients. Stemmler S, et al. Int J Immunogenet, 2009 Aug. PMID 19601998. Expression patterns of S100 proteins in melanocytes and melanocytic lesions. Petersson S, et al. Melanoma Res, 2009 Aug. PMID 19521263.