

S100A11 Antibody (monoclonal) (M01)**Mouse monoclonal antibody raised against a full length recombinant S100A11.****Catalog # AT3752a****Specification**

S100A11 Antibody (monoclonal) (M01) - Product Information

Application	IF, WB, IHC, E
Primary Accession	P31949
Other Accession	BC014354
Reactivity	Human
Host	mouse
Clonality	Monoclonal
Isotype	IgG2a Kappa
Calculated MW	11740

S100A11 Antibody (monoclonal) (M01) - Additional Information**Gene ID** 6282**Other Names**

Protein S100-A11, Calgizzarin, Metastatic lymph node gene 70 protein, MLN 70, Protein S100-C, S100 calcium-binding protein A11, Protein S100-A11, N-terminally processed, S100A11, MLN70, S100C

Target/Specificity

S100A11 (AAH14354, 1 a.a. ~ 105 a.a) full-length recombinant protein with GST tag. MW of the GST tag alone is 26 KDa.

Dilution

WB~~1:500~1000

Format

Clear, colorless solution in phosphate buffered saline, pH 7.2 .

Storage

Store at -20°C or lower. Aliquot to avoid repeated freezing and thawing.

Precautions

S100A11 Antibody (monoclonal) (M01) is for research use only and not for use in diagnostic or therapeutic procedures.

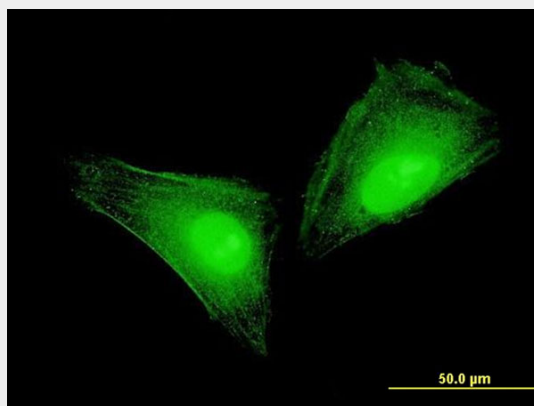
S100A11 Antibody (monoclonal) (M01) - Protocols

Provided below are standard protocols that you may find useful for product applications.

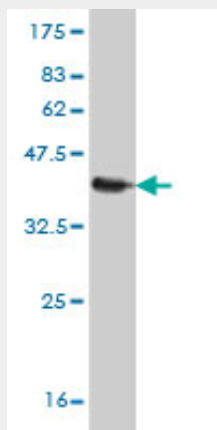
- [Western Blot](#)
- [Blocking Peptides](#)

- [Dot Blot](#)
- [Immunohistochemistry](#)
- [Immunofluorescence](#)
- [Immunoprecipitation](#)
- [Flow Cytometry](#)
- [Cell Culture](#)

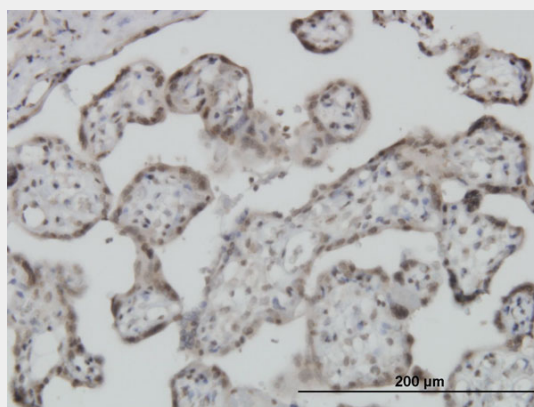
S100A11 Antibody (monoclonal) (M01) - Images



Immunofluorescence of monoclonal antibody to S100A11 on HeLa cell . [antibody concentration 10 ug/ml]

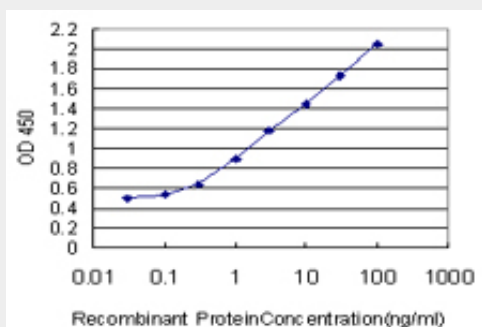


Antibody Reactive Against Recombinant Protein. Western Blot detection against Immunogen (37.29 KDa) .



Immunoperoxidase of monoclonal antibody to S100A11 on formalin-fixed paraffin-embedded

human placenta. [antibody concentration 3 ug/ml]



Detection limit for recombinant GST tagged S100A11 is approximately 0.03ng/ml as a capture antibody.

S100A11 Antibody (monoclonal) (M01) - Background

The protein encoded by this gene is a member of the S100 family of proteins containing 2 EF-hand calcium-binding motifs. S100 proteins are localized in the cytoplasm and/or nucleus of a wide range of cells, and involved in the regulation of a number of cellular processes such as cell cycle progression and differentiation. S100 genes include at least 13 members which are located as a cluster on chromosome 1q21. This protein may function in motility, invasion, and tubulin polymerization. Chromosomal rearrangements and altered expression of this gene have been implicated in tumor metastasis.

S100A11 Antibody (monoclonal) (M01) - References

1.S100A expression in normal corneal-limbal epithelial cells and ocular surface squamous cell carcinoma tissue.Li J, Riau AK, Setiawan M, Mehta JS, Ti SE, Tong L, Tan DT, Beuerman RW.Mol Vis. 2011;17:2263-71. Epub 2011 Aug 20.

S100A11 Antibody (monoclonal) (M01) - Citations

- [S100A11 is a potential prognostic marker for clear cell renal cell carcinoma.](#)