

**S100A2 Antibody (monoclonal) (M06)****Mouse monoclonal antibody raised against a full length recombinant S100A2.****Catalog # AT3755a****Specification**

---

**S100A2 Antibody (monoclonal) (M06) - Product Information**

Application	IF, WB, E
Primary Accession	<a href="#">P29034</a>
Other Accession	<a href="#">BC002829</a>
Reactivity	Human
Host	mouse
Clonality	Monoclonal
Isotype	IgG2a Kappa
Calculated MW	11117

**S100A2 Antibody (monoclonal) (M06) - Additional Information****Gene ID** 6273**Other Names**

Protein S100-A2, CAN19, Protein S-100L, S100 calcium-binding protein A2, S100A2, S100L

**Target/Specificity**

S100A2 (AAH02829, 1 a.a. ~ 97 a.a) full-length recombinant protein with GST tag. MW of the GST tag alone is 26 KDa.

**Dilution**

WB~~1:500~1000

**Format**

Clear, colorless solution in phosphate buffered saline, pH 7.2 .

**Storage**

Store at -20°C or lower. Aliquot to avoid repeated freezing and thawing.

**Precautions**

S100A2 Antibody (monoclonal) (M06) is for research use only and not for use in diagnostic or therapeutic procedures.

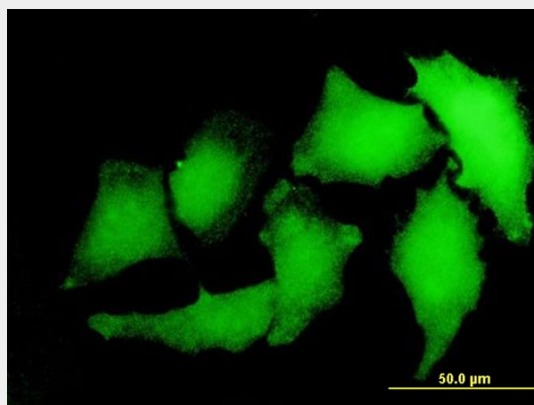
**S100A2 Antibody (monoclonal) (M06) - Protocols**

Provided below are standard protocols that you may find useful for product applications.

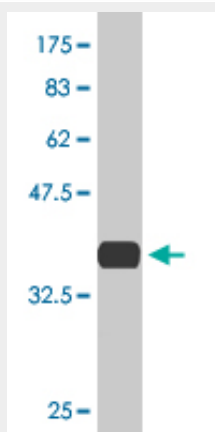
- [Western Blot](#)
- [Blocking Peptides](#)
- [Dot Blot](#)
- [Immunohistochemistry](#)

- [Immunofluorescence](#)
- [Immunoprecipitation](#)
- [Flow Cytometry](#)
- [Cell Culture](#)

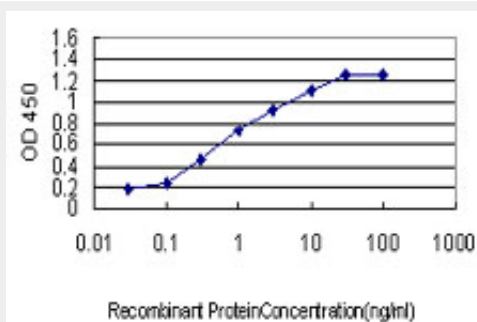
### S100A2 Antibody (monoclonal) (M06) - Images



Immunofluorescence of monoclonal antibody to S100A2 on HeLa cell . [antibody concentration 10 ug/ml]



Antibody Reactive Against Recombinant Protein. Western Blot detection against Immunogen (36.41 KDa) .



Detection limit for recombinant GST tagged S100A2 is approximately 0.03ng/ml as a capture antibody.

### S100A2 Antibody (monoclonal) (M06) - Background

The protein encoded by this gene is a member of the S100 family of proteins containing 2 EF-hand

calcium-binding motifs. S100 proteins are localized in the cytoplasm and/or nucleus of a wide range of cells, and involved in the regulation of a number of cellular processes such as cell cycle progression and differentiation. S100 genes include at least 13 members which are located as a cluster on chromosome 1q21. This protein may have a tumor suppressor function. Chromosomal rearrangements and altered expression of this gene have been implicated in breast cancer.

#### **S100A2 Antibody (monoclonal) (M06) - References**

An approach based on a genome-wide association study reveals candidate loci for narcolepsy. Shimada M, et al. Hum Genet, 2010 Oct. PMID 20677014. S100 proteins interact with the N-terminal domain of MDM2. van Dieck J, et al. FEBS Lett, 2010 Aug 4. PMID 20591429. Expression and clinical significance of S100A2 and p63 in esophageal carcinoma. Cao LY, et al. World J Gastroenterol, 2009 Sep 7. PMID 19725154. Variation in genes of the epidermal differentiation complex in German atopic dermatitis patients. Stemmler S, et al. Int J Immunogenet, 2009 Aug. PMID 19601998. Expression of S100A2 calcium-binding protein predicts response to pancreatectomy for pancreatic cancer. Biankin AV, et al. Gastroenterology, 2009 Aug. PMID 19376121.