

SCAP1 Antibody (monoclonal) (M02)**Mouse monoclonal antibody raised against a partial recombinant SCAP1.****Catalog # AT3782a****Specification**

SCAP1 Antibody (monoclonal) (M02) - Product Information

| | |
|-------------------|---------------------------|
| Application | WB, E |
| Primary Accession | Q86WV1 |
| Other Accession | NM_003726 |
| Reactivity | Human |
| Host | Mouse |
| Clonality | Monoclonal |
| Isotype | IgG1 Kappa |
| Calculated MW | 41432 |

SCAP1 Antibody (monoclonal) (M02) - Additional Information**Gene ID** 8631**Other Names**

Src kinase-associated phosphoprotein 1, Src family-associated phosphoprotein 1, Src kinase-associated phosphoprotein of 55 kDa, SKAP-55, pp55, SKAP1, SCAP1, SKAP55

Target/Specificity

SCAP1 (NP_003717, 1 a.a. ~ 100 a.a) partial recombinant protein with GST tag. MW of the GST tag alone is 26 kDa.

Dilution

WB~~1:500~1000

Format

Clear, colorless solution in phosphate buffered saline, pH 7.2 .

Storage

Store at -20°C or lower. Aliquot to avoid repeated freezing and thawing.

Precautions

SCAP1 Antibody (monoclonal) (M02) is for research use only and not for use in diagnostic or therapeutic procedures.

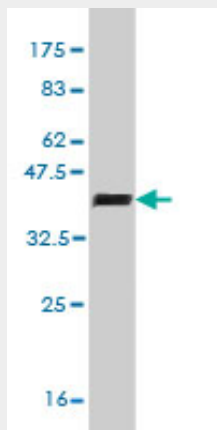
SCAP1 Antibody (monoclonal) (M02) - Protocols

Provided below are standard protocols that you may find useful for product applications.

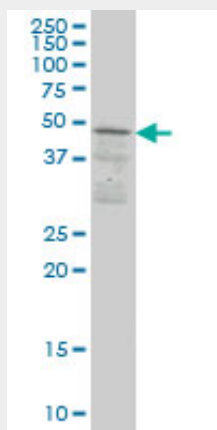
- [Western Blot](#)
- [Blocking Peptides](#)
- [Dot Blot](#)

- [Immunohistochemistry](#)
- [Immunofluorescence](#)
- [Immunoprecipitation](#)
- [Flow Cytometry](#)
- [Cell Culture](#)

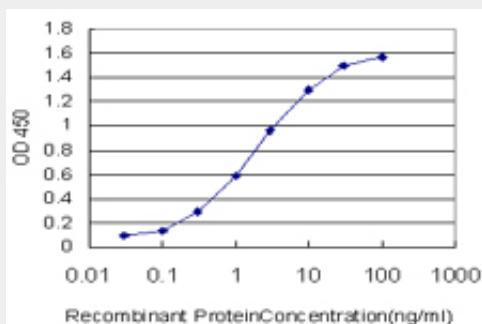
SCAP1 Antibody (monoclonal) (M02) - Images



Antibody Reactive Against Recombinant Protein. Western Blot detection against Immunogen (36.74 kDa) .



SCAP1 monoclonal antibody (M02), clone 1C11 Western Blot analysis of SCAP1 expression in Jurkat (Cat # AT3782a)



Detection limit for recombinant GST tagged SCAP1 is approximately 0.3ng/ml as a capture antibody.

SCAP1 Antibody (monoclonal) (M02) - Background

This gene encodes a T cell adaptor protein, a class of intracellular molecules with modular domains capable of recruiting additional proteins but that exhibit no intrinsic enzymatic activity. The encoded protein contains a unique N-terminal region followed by a PH domain and C-terminal SH3 domain. Along with the adhesion and degranulation-promoting adaptor protein, the encoded protein plays a critical role in inside-out signaling by coupling T-cell antigen receptor stimulation to the activation of integrins.

SCAP1 Antibody (monoclonal) (M02) - References

Personalized smoking cessation: interactions between nicotine dose, dependence and quit-success genotype score. Rose JE, et al. Mol Med, 2010 Jul-Aug. PMID 20379614. T cell receptor inside-out pathway via signaling module SKAP1-RapL regulates T cell motility and interactions in lymph nodes. Raab M, et al. Immunity, 2010 Apr 23. PMID 20346707. A novel S3S-TAP-tag for the isolation of T-cell interaction partners of adhesion and degranulation promoting adaptor protein. Lehmann R, et al. Proteomics, 2009 Dec. PMID 19798671. SKAP associates with kinetochores and promotes the metaphase-to-anaphase transition. Fang L, et al. Cell Cycle, 2009 Sep 1. PMID 19667759. SKAP55 modulates T cell antigen receptor-induced activation of the Ras-Erk-AP1 pathway by binding RasGRP1. Kosco KA, et al. Mol Immunol, 2008 Jan. PMID 17658605.