

SDF2 Antibody (monoclonal) (M01)

Mouse monoclonal antibody raised against a full length recombinant SDF2.

Catalog # AT3801a

Specification

SDF2 Antibody (monoclonal) (M01) - Product Information

Application	WB, IHC, E
Primary Accession	Q99470
Other Accession	BC000500
Reactivity	Human
Host	mouse
Clonality	Monoclonal
Isotype	IgG1 Kappa
Calculated MW	23026

SDF2 Antibody (monoclonal) (M01) - Additional Information

Gene ID 6388

Other Names

Stromal cell-derived factor 2, SDF-2, SDF2

Target/Specificity

SDF2 (AAH00500.1, 20 a.a. ~ 211 a.a) full-length recombinant protein with GST tag. MW of the GST tag alone is 26 KDa.

Dilution

WB~~1:500~1000

Format

Clear, colorless solution in phosphate buffered saline, pH 7.2 .

Storage

Store at -20°C or lower. Aliquot to avoid repeated freezing and thawing.

Precautions

SDF2 Antibody (monoclonal) (M01) is for research use only and not for use in diagnostic or therapeutic procedures.

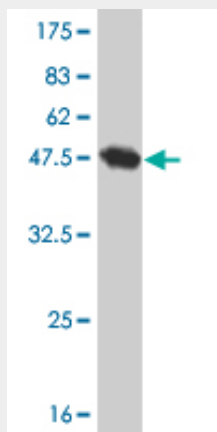
SDF2 Antibody (monoclonal) (M01) - Protocols

Provided below are standard protocols that you may find useful for product applications.

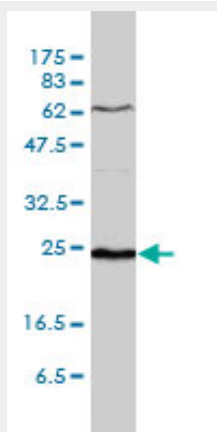
- [Western Blot](#)
- [Blocking Peptides](#)
- [Dot Blot](#)
- [Immunohistochemistry](#)

- [Immunofluorescence](#)
- [Immunoprecipitation](#)
- [Flow Cytometry](#)
- [Cell Culture](#)

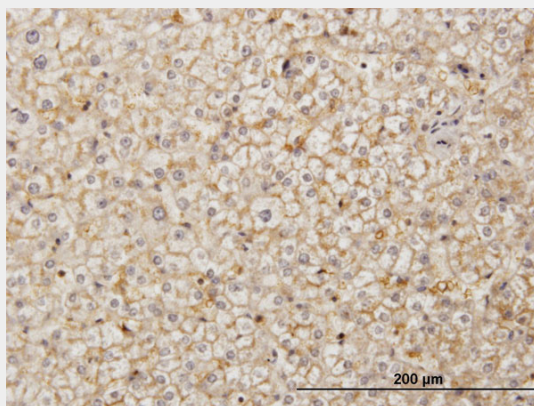
SDF2 Antibody (monoclonal) (M01) - Images



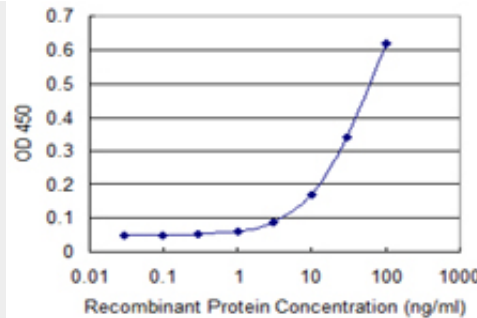
Antibody Reactive Against Recombinant Protein. Western Blot detection against Immunogen (46.75 KDa) .



SDF2 monoclonal antibody (M01), clone 3G7-1D6 Western Blot analysis of SDF2 expression in WI-38 ((Cat # AT3801a)



Immunoperoxidase of monoclonal antibody to SDF2 on formalin-fixed paraffin-embedded human liver. [antibody concentration 3 ug/ml]



Detection limit for recombinant GST tagged SDF2 is 1 ng/ml as a capture antibody.

SDF2 Antibody (monoclonal) (M01) - Background

The protein encoded by this gene is believed to be a secretory protein. It has regions of similarity to hydrophilic segments of yeast mannosyltransferases. Its expression is ubiquitous and the gene appears to be relatively conserved among mammals.

SDF2 Antibody (monoclonal) (M01) - References

Defining the human deubiquitinating enzyme interaction landscape. Sowa ME, et al. Cell, 2009 Jul 23. PMID 19615732. Transcript analyses of stromal cell derived factors (SDFs): SDF-2, SDF-4 and SDF-5 reveal a different pattern of expression and prognostic association in human breast cancer. Kang H, et al. Int J Oncol, 2009 Jul. PMID 19513569. Phenotype-genotype interactions on renal function in type 2 diabetes: an analysis using structural equation modelling. Song XY, et al. Diabetologia, 2009 Aug. PMID 19479237. The status, quality, and expansion of the NIH full-length cDNA project: the Mammalian Gene Collection (MGC). Gerhard DS, et al. Genome Res, 2004 Oct. PMID 15489334. Generation and initial analysis of more than 15,000 full-length human and mouse cDNA sequences. Strausberg RL, et al. Proc Natl Acad Sci U S A, 2002 Dec 24. PMID 12477932.