

SFRS6 Antibody (monoclonal) (M01)**Mouse monoclonal antibody raised against a partial recombinant SFRS6.****Catalog # AT3847a****Specification**

SFRS6 Antibody (monoclonal) (M01) - Product Information

Application	WB, E
Primary Accession	Q13247
Other Accession	NM_006275
Reactivity	Human
Host	mouse
Clonality	Monoclonal
Isotype	IgG3 Kappa
Calculated MW	39587

SFRS6 Antibody (monoclonal) (M01) - Additional Information**Gene ID** 6431**Other Names**

Serine/arginine-rich splicing factor 6, Pre-mRNA-splicing factor SRP55, Splicing factor, arginine/serine-rich 6, SRSF6, SFRS6, SRP55

Target/Specificity

SFRS6 (NP_006266, 1 a.a. ~ 75 a.a) partial recombinant protein with GST tag. MW of the GST tag alone is 26 KDa.

Dilution

WB~~1:500~1000

Format

Clear, colorless solution in phosphate buffered saline, pH 7.2 .

Storage

Store at -20°C or lower. Aliquot to avoid repeated freezing and thawing.

Precautions

SFRS6 Antibody (monoclonal) (M01) is for research use only and not for use in diagnostic or therapeutic procedures.

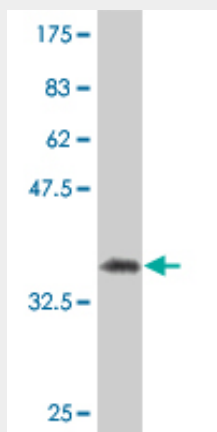
SFRS6 Antibody (monoclonal) (M01) - Protocols

Provided below are standard protocols that you may find useful for product applications.

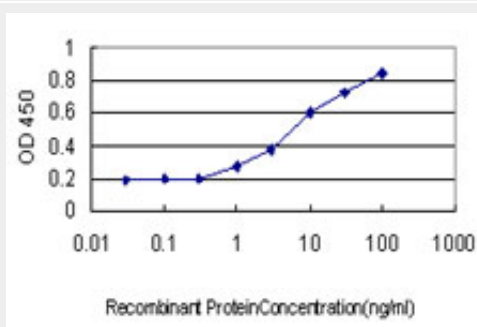
- [Western Blot](#)
- [Blocking Peptides](#)
- [Dot Blot](#)

- [Immunohistochemistry](#)
- [Immunofluorescence](#)
- [Immunoprecipitation](#)
- [Flow Cytometry](#)
- [Cell Culture](#)

SFRS6 Antibody (monoclonal) (M01) - Images



Antibody Reactive Against Recombinant Protein. Western Blot detection against Immunogen (33.99 kDa) .



Detection limit for recombinant GST tagged SFRS6 is approximately 1ng/ml as a capture antibody.

SFRS6 Antibody (monoclonal) (M01) - Background

The protein encoded by this gene is involved in mRNA splicing and may play a role in the determination of alternative splicing. The encoded nuclear protein belongs to the splicing factor SR family and has been shown to bind with and modulate another member of the family, SFRS12. Alternative splicing results in multiple transcript variants. In addition, two pseudogenes, one on chromosome 17 and the other on the X chromosome, have been found for this gene.

SFRS6 Antibody (monoclonal) (M01) - References

Variation at the NFATC2 Locus Increases the Risk of Thiazolidinedione-Induced Edema in the Diabetes REduction Assessment with ramipril and rosiglitazone Medication (DREAM) Study. Bailey SD, et al. Diabetes Care, 2010 Jul 13. PMID 20628086. A rational nomenclature for serine/arginine-rich protein splicing factors (SR proteins). Manley JL, et al. Genes Dev, 2010 Jun 1. PMID 20516191. SRp40 and SRp55 promote the translation of unspliced human immunodeficiency virus type 1 RNA. Swanson CM, et al. J Virol, 2010 Jul. PMID 20427542. Gene-centric association signals for lipids and apolipoproteins identified via the HumanCVD BeadChip. Talmud PJ, et al. Am J Hum Genet, 2009 Nov. PMID 19913121. The SR protein family. Shepard PJ, et al. Genome Biol, 2009.

PMID 19857271.