

SGCB Antibody (monoclonal) (M01)

Mouse monoclonal antibody raised against a full length recombinant SGCB.

Catalog # AT3852a

Specification

SGCB Antibody (monoclonal) (M01) - Product Information

Application	WB, IHC, E
Primary Accession	Q16585
Other Accession	BC020709
Reactivity	Human
Host	mouse
Clonality	Monoclonal
Isotype	IgG1 Kappa
Calculated MW	34777

SGCB Antibody (monoclonal) (M01) - Additional Information

Gene ID 6443

Other Names

Beta-sarcoglycan, Beta-SG, 43 kDa dystrophin-associated glycoprotein, 43DAG, A3b, SGCB

Target/Specificity

SGCB (AAH20709, 1 a.a. ~ 318 a.a) full-length recombinant protein with GST tag. MW of the GST tag alone is 26 KDa.

Dilution

WB~~1:500~1000

Format

Clear, colorless solution in phosphate buffered saline, pH 7.2 .

Storage

Store at -20°C or lower. Aliquot to avoid repeated freezing and thawing.

Precautions

SGCB Antibody (monoclonal) (M01) is for research use only and not for use in diagnostic or therapeutic procedures.

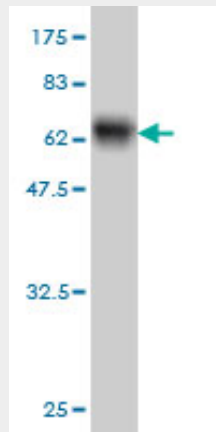
SGCB Antibody (monoclonal) (M01) - Protocols

Provided below are standard protocols that you may find useful for product applications.

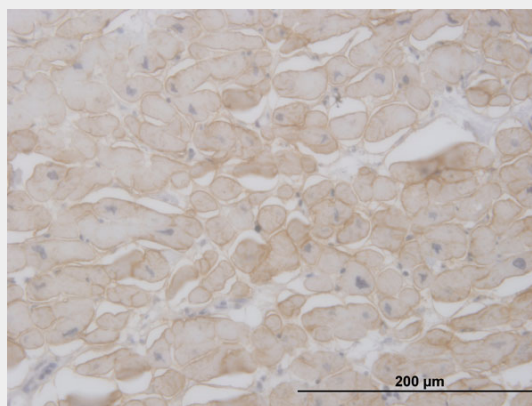
- [Western Blot](#)
- [Blocking Peptides](#)
- [Dot Blot](#)
- [Immunohistochemistry](#)

- [Immunofluorescence](#)
- [Immunoprecipitation](#)
- [Flow Cytometry](#)
- [Cell Culture](#)

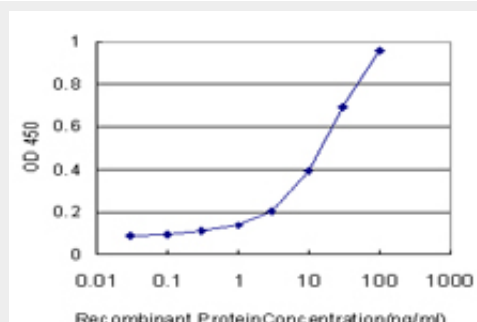
SGCB Antibody (monoclonal) (M01) - Images



Antibody Reactive Against Recombinant Protein. Western Blot detection against Immunogen (60.72 KDa) .



Immunoperoxidase of monoclonal antibody to SGCB on formalin-fixed paraffin-embedded human heart. [antibody concentration 3 ug/ml]



Detection limit for recombinant GST tagged SGCB is approximately 0.3ng/ml as a capture antibody.

SGCB Antibody (monoclonal) (M01) - Background

This gene encodes a member of the sarcoglycan family. Sarcoglycans are transmembrane

components in the dystrophin-glycoprotein complex which help stabilize the muscle fiber membranes and link the muscle cytoskeleton to the extracellular matrix. Mutations in this gene have been associated with limb-girdle muscular dystrophy.

SGCB Antibody (monoclonal) (M01) - References

Sarcoglycanopathies: can muscle immunoanalysis predict the genotype? Klinge L, et al. Neuromuscul Disord, 2008 Dec. PMID 18996010. Expression of the dystrophin-glycoprotein complex is a marker for human airway smooth muscle phenotype maturation. Sharma P, et al. Am J Physiol Lung Cell Mol Physiol, 2008 Jan. PMID 17993586. The beta-delta-core of sarcoglycan is essential for deposition at the plasma membrane. Draviam RA, et al. Muscle Nerve, 2006 Dec. PMID 17036316. Muscle protein analysis in the detection of heterozygotes for recessive limb girdle muscular dystrophy type 2B and 2E. Fanin M, et al. Neuromuscul Disord, 2006 Nov. PMID 16934466. Homozygous microdeletion of chromosome 4q11-q12 causes severe limb-girdle muscular dystrophy type 2E with joint hyperlaxity and contractures. Kaundl AM, et al. Hum Mutat, 2005 Sep. PMID 16088906.