

SGK2 Antibody (monoclonal) (M05)**Mouse monoclonal antibody raised against a partial recombinant SGK2.****Catalog # AT3855a****Specification**

SGK2 Antibody (monoclonal) (M05) - Product Information

Application	IF, WB, E
Primary Accession	Q9HBY8
Other Accession	BC065511
Reactivity	Human, Mouse
Host	mouse
Clonality	Monoclonal
Isotype	IgG3 Kappa
Calculated MW	41175

SGK2 Antibody (monoclonal) (M05) - Additional Information**Gene ID** 10110**Other Names**

Serine/threonine-protein kinase Sgk2, Serum/glucocorticoid-regulated kinase 2, SGK2

Target/Specificity

SGK2 (AAH65511, 293 a.a. ~ 367 a.a) partial recombinant protein with GST tag. MW of the GST tag alone is 26 KDa.

Dilution

WB~~1:500~1000

Format

Clear, colorless solution in phosphate buffered saline, pH 7.2 .

Storage

Store at -20°C or lower. Aliquot to avoid repeated freezing and thawing.

Precautions

SGK2 Antibody (monoclonal) (M05) is for research use only and not for use in diagnostic or therapeutic procedures.

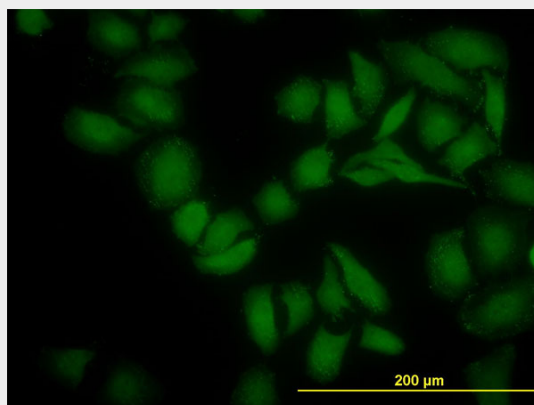
SGK2 Antibody (monoclonal) (M05) - Protocols

Provided below are standard protocols that you may find useful for product applications.

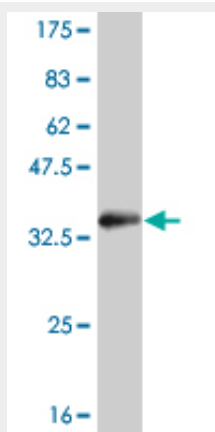
- [Western Blot](#)
- [Blocking Peptides](#)
- [Dot Blot](#)
- [Immunohistochemistry](#)

- [Immunofluorescence](#)
- [Immunoprecipitation](#)
- [Flow Cytometry](#)
- [Cell Culture](#)

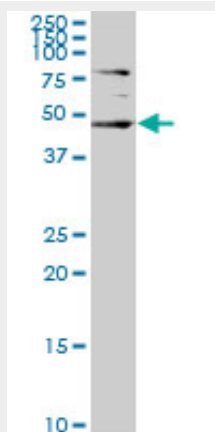
SGK2 Antibody (monoclonal) (M05) - Images



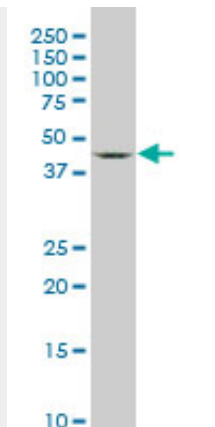
Immunofluorescence of monoclonal antibody to SGK2 on HeLa cell. [antibody concentration 10 ug/ml]



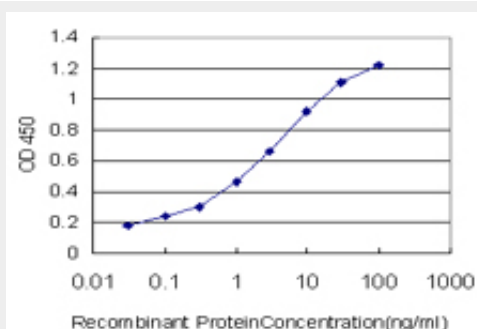
Antibody Reactive Against Recombinant Protein. Western Blot detection against Immunogen (33.88 KDa) .



SGK2 monoclonal antibody (M05), clone 4G4. Western Blot analysis of SGK2 expression in HepG2 ((Cat # AT3855a)



SGK2 monoclonal antibody (M05), clone 4G4. Western Blot analysis of SGK2 expression in Raw 264.7.



Detection limit for recombinant GST tagged SGK2 is approximately 0.1ng/ml as a capture antibody.

SGK2 Antibody (monoclonal) (M05) - Background

This gene encodes a serine/threonine protein kinase. Although this gene product is similar to serum- and glucocorticoid-induced protein kinase (SGK), this gene is not induced by serum or glucocorticoids. This gene is induced in response to signals that activate phosphatidylinositol 3-kinase, which is also true for SGK. Two alternate transcripts encoding two different isoforms have been described.

SGK2 Antibody (monoclonal) (M05) - References

Sgk kinases and their role in epithelial transport. Loffing J, et al. Annu Rev Physiol, 2006. PMID 16460280. Transcriptional maps of 10 human chromosomes at 5-nucleotide resolution. Cheng J, et al. Science, 2005 May 20. PMID 15790807. Regulation of cardiac shal-related potassium channel Kv 4.3 by serum- and glucocorticoid-inducible kinase isoforms in Xenopus oocytes. Baltaev R, et al. Pflugers Arch, 2005 Apr. PMID 15578212. The status, quality, and expansion of the NIH full-length cDNA project: the Mammalian Gene Collection (MGC). Gerhard DS, et al. Genome Res, 2004 Oct. PMID 15489334. Regulation of KCNE1-dependent K(+) current by the serum and glucocorticoid-inducible kinase (SGK) isoforms. Embark HM, et al. Pflugers Arch, 2003 Feb. PMID 12634932.