

SH3MD2 Antibody (monoclonal) (M01)**Mouse monoclonal antibody raised against a partial recombinant SH3MD2.****Catalog # AT3876a****Specification**

SH3MD2 Antibody (monoclonal) (M01) - Product Information

Application	WB, E
Primary Accession	Q7Z6J0
Other Accession	NM_020870
Reactivity	Human, Rat
Host	Mouse
Clonality	Monoclonal
Isotype	IgG2a Kappa
Calculated MW	93129

SH3MD2 Antibody (monoclonal) (M01) - Additional Information**Gene ID** 57630**Other Names**

E3 ubiquitin-protein ligase SH3RF1, 632-, Plenty of SH3s, Protein POSH, RING finger protein 142, SH3 domain-containing RING finger protein 1, SH3 multiple domains protein 2, SH3RF1, KIAA1494, POSH, RNF142, SH3MD2

Target/Specificity

SH3MD2 (NP_065921, 790 a.a. ~ 888 a.a) partial recombinant protein with GST tag. MW of the GST tag alone is 26 KDa.

Dilution

WB~~1:500~1000

Format

Clear, colorless solution in phosphate buffered saline, pH 7.2 .

Storage

Store at -20°C or lower. Aliquot to avoid repeated freezing and thawing.

Precautions

SH3MD2 Antibody (monoclonal) (M01) is for research use only and not for use in diagnostic or therapeutic procedures.

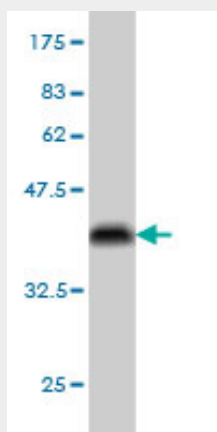
SH3MD2 Antibody (monoclonal) (M01) - Protocols

Provided below are standard protocols that you may find useful for product applications.

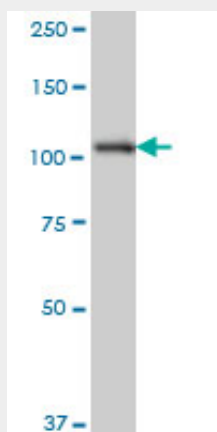
- [Western Blot](#)
- [Blocking Peptides](#)

- [Dot Blot](#)
- [Immunohistochemistry](#)
- [Immunofluorescence](#)
- [Immunoprecipitation](#)
- [Flow Cytometry](#)
- [Cell Culture](#)

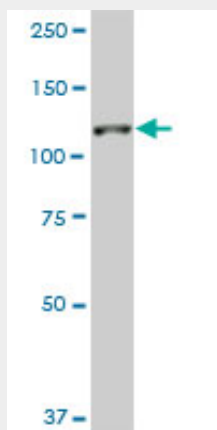
SH3MD2 Antibody (monoclonal) (M01) - Images



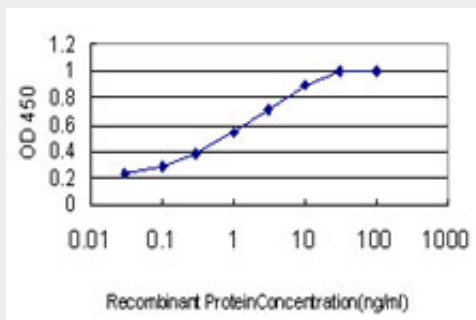
Antibody Reactive Against Recombinant Protein. Western Blot detection against Immunogen (36.63 KDa) .



SH3MD2 monoclonal antibody (M01), clone 3H3 Western Blot analysis of SH3MD2 expression in HeLa ((Cat # AT3876a)



SH3MD2 monoclonal antibody (M01), clone 3H3. Western Blot analysis of SH3MD2 expression in PC-12 (Cat # AT3876a)



Detection limit for recombinant GST tagged SH3MD2 is approximately 0.03ng/ml as a capture antibody.

SH3MD2 Antibody (monoclonal) (M01) - Background

This gene encodes a protein containing an N-terminus RING-finger, four SH3 domains, and a region implicated in binding of the Rho GTPase Rac. Via the RING-finger, the encoded protein has been shown to function as an ubiquitin-protein ligase involved in protein sorting at the trans-Golgi network. The encoded protein may also act as a scaffold for the c-Jun N-terminal kinase signaling pathway, facilitating the formation of a functional signaling module.

SH3MD2 Antibody (monoclonal) (M01) - References

1.Sh3rf2/POSH promotes cell survival by RING-mediated proteasomal degradation of the JNK scaffold POSH.Wilhelm M, Kukekov NV, Schmit TL, Biagas KV, Sproul AA, Gire S, Maes ME, Xu Z, Greene LA.J Biol Chem. 2011 Nov 28.