

SHC4 Antibody (monoclonal) (M01)**Mouse monoclonal antibody raised against a full length recombinant SHC4.****Catalog # AT3882a****Specification**

SHC4 Antibody (monoclonal) (M01) - Product Information

Application	WB
Primary Accession	Q6S5L8
Other Accession	BC033907
Reactivity	Human
Host	mouse
Clonality	Monoclonal
Isotype	IgG2b Kappa
Calculated MW	68785

SHC4 Antibody (monoclonal) (M01) - Additional Information**Gene ID** 399694**Other Names**

SHC-transforming protein 4, Rai-like protein, RaLP, SHC-transforming protein D, hShcD, Src homology 2 domain-containing-transforming protein C4, SH2 domain protein C4, SHC4, SHCD

Target/Specificity

SHC4 (AAH33907, 1 a.a. ~ 630 a.a) full-length recombinant protein with GST tag. MW of the GST tag alone is 26 KDa.

Dilution

WB~~1:500~1000

Format

Clear, colorless solution in phosphate buffered saline, pH 7.2 .

Storage

Store at -20°C or lower. Aliquot to avoid repeated freezing and thawing.

Precautions

SHC4 Antibody (monoclonal) (M01) is for research use only and not for use in diagnostic or therapeutic procedures.

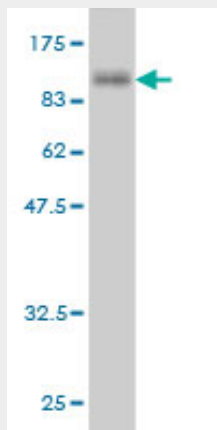
SHC4 Antibody (monoclonal) (M01) - Protocols

Provided below are standard protocols that you may find useful for product applications.

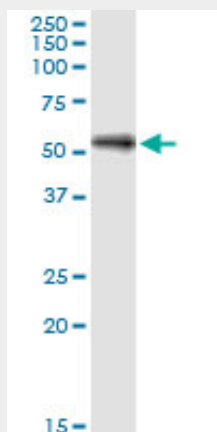
- [Western Blot](#)
- [Blocking Peptides](#)
- [Dot Blot](#)

- [Immunohistochemistry](#)
- [Immunofluorescence](#)
- [Immunoprecipitation](#)
- [Flow Cytometry](#)
- [Cell Culture](#)

SHC4 Antibody (monoclonal) (M01) - Images



Antibody Reactive Against Recombinant Protein. Western Blot detection against Immunogen (95.04 kDa) .



SHC4 monoclonal antibody (M01), clone 2F5. Western Blot analysis of SHC4 expression in human spleen.

SHC4 Antibody (monoclonal) (M01) - References

Personalized smoking cessation: interactions between nicotine dose, dependence and quit-success genotype score. Rose JE, et al. Mol Med, 2010 Jul-Aug. PMID 20379614. Analysis of a Shc family adaptor protein, ShcD/Shc4, that associates with muscle-specific kinase. Jones N, et al. Mol Cell Biol, 2007 Jul. PMID 17452444. RaLP, a new member of the Src homology and collagen family, regulates cell migration and tumor growth of metastatic melanomas. Fagiani E, et al. Cancer Res, 2007 Apr 1. PMID 17409413. The secreted protein discovery initiative (SPDI), a large-scale effort to identify novel human secreted and transmembrane proteins: a bioinformatics assessment. Clark HF, et al. Genome Res, 2003 Oct. PMID 12975309. Generation and initial analysis of more than 15,000 full-length human and mouse cDNA sequences. Strausberg RL, et al. Proc Natl Acad Sci U S A, 2002 Dec 24. PMID 12477932.