

SLC2A4 Antibody (monoclonal) (M08)**Mouse monoclonal antibody raised against a partial recombinant SLC2A4.****Catalog # AT3919a****Specification**

SLC2A4 Antibody (monoclonal) (M08) - Product Information

Application	WB
Primary Accession	P14672
Other Accession	NM_001042
Reactivity	Human
Host	mouse
Clonality	Monoclonal
Isotype	IgG2b Kappa
Calculated MW	54787

SLC2A4 Antibody (monoclonal) (M08) - Additional Information**Gene ID** 6517**Other Names**

Solute carrier family 2, facilitated glucose transporter member 4, Glucose transporter type 4, insulin-responsive, GLUT-4, SLC2A4, GLUT4

Target/Specificity

SLC2A4 (NP_001033, 467 a.a. ~ 509 a.a) partial recombinant protein with GST tag. MW of the GST tag alone is 26 KDa.

Dilution

WB~~1:500~1000

Format

Clear, colorless solution in phosphate buffered saline, pH 7.2 .

Storage

Store at -20°C or lower. Aliquot to avoid repeated freezing and thawing.

Precautions

SLC2A4 Antibody (monoclonal) (M08) is for research use only and not for use in diagnostic or therapeutic procedures.

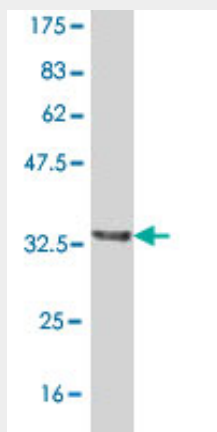
SLC2A4 Antibody (monoclonal) (M08) - Protocols

Provided below are standard protocols that you may find useful for product applications.

- [Western Blot](#)
- [Blocking Peptides](#)
- [Dot Blot](#)

- [Immunohistochemistry](#)
- [Immunofluorescence](#)
- [Immunoprecipitation](#)
- [Flow Cytometry](#)
- [Cell Culture](#)

SLC2A4 Antibody (monoclonal) (M08) - Images



Antibody Reactive Against Recombinant Protein. Western Blot detection against Immunogen (30.47 kDa) .

SLC2A4 Antibody (monoclonal) (M08) - Background

This gene is a member of the solute carrier family 2 (facilitated glucose transporter) family and encodes a protein that functions as an insulin-regulated facilitative glucose transporter. In the absence of insulin, this integral membrane protein is sequestered within the cells of muscle and adipose tissue. Within minutes of insulin stimulation, the protein moves to the cell surface and begins to transport glucose across the cell membrane. Mutations in this gene have been associated with noninsulin-dependent diabetes mellitus (NIDDM).

SLC2A4 Antibody (monoclonal) (M08) - References

Variation at the NFATC2 Locus Increases the Risk of Thiazolidinedione-Induced Edema in the Diabetes REduction Assessment with ramipril and rosiglitazone Medication (DREAM) Study. Bailey SD, et al. Diabetes Care, 2010 Jul 13. PMID 20628086. Case-control analysis of SNPs in GLUT4, RBP4 and STRA6: association of SNPs in STRA6 with type 2 diabetes in a South Indian population. Nair AK, et al. PLoS One, 2010 Jul 6. PMID 20625434. Measuring GLUT4 translocation in mature muscle fibers. Lauritzen HP, et al. Am J Physiol Endocrinol Metab, 2010 Aug. PMID 20501875. Regulation of cardiomyocyte Glut4 expression by ZAC1. Czubyrt MP, et al. J Biol Chem, 2010 May 28. PMID 20363751. Long-term ethanol exposure inhibits glucose transporter 4 expression via an AMPK-dependent pathway in adipocytes. Feng L, et al. Acta Pharmacol Sin, 2010 Mar. PMID 20173759.