

**SLC36A2 Antibody (monoclonal) (M04)****Mouse monoclonal antibody raised against a partial recombinant SLC36A2.****Catalog # AT3923a****Specification**

---

**SLC36A2 Antibody (monoclonal) (M04) - Product Information**

Application	WB, E
Primary Accession	<a href="#">Q495M3</a>
Other Accession	<a href="#">NM_181776</a>
Reactivity	Human
Host	mouse
Clonality	Monoclonal
Isotype	IgG2b Kappa
Calculated MW	53216

**SLC36A2 Antibody (monoclonal) (M04) - Additional Information****Gene ID** 153201**Other Names**

Proton-coupled amino acid transporter 2, Proton/amino acid transporter 2, Solute carrier family 36 member 2, Tramdorin-1, SLC36A2, PAT2, TRAMD1

**Target/Specificity**

SLC36A2 (NP\_861441, 1 a.a. ~ 71 a.a) partial recombinant protein with GST tag. MW of the GST tag alone is 26 KDa.

**Dilution**

WB~~1:500~1000

**Format**

Clear, colorless solution in phosphate buffered saline, pH 7.2 .

**Storage**

Store at -20°C or lower. Aliquot to avoid repeated freezing and thawing.

**Precautions**

SLC36A2 Antibody (monoclonal) (M04) is for research use only and not for use in diagnostic or therapeutic procedures.

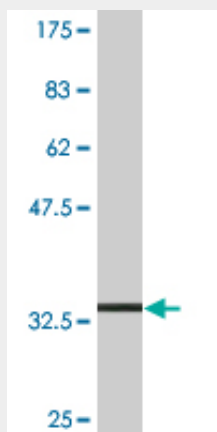
**SLC36A2 Antibody (monoclonal) (M04) - Protocols**

Provided below are standard protocols that you may find useful for product applications.

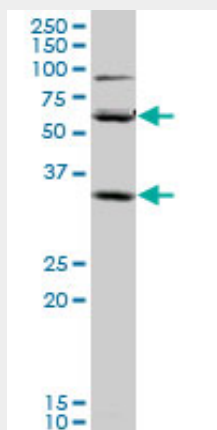
- [Western Blot](#)
- [Blocking Peptides](#)
- [Dot Blot](#)

- [Immunohistochemistry](#)
- [Immunofluorescence](#)
- [Immunoprecipitation](#)
- [Flow Cytometry](#)
- [Cell Culture](#)

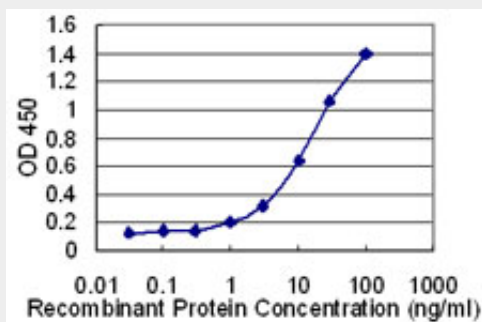
### SLC36A2 Antibody (monoclonal) (M04) - Images



Antibody Reactive Against Recombinant Protein. Western Blot detection against Immunogen (33.55 kDa) .



SLC36A2 monoclonal antibody (M04), clone 2H3. Western Blot analysis of SLC36A2 expression in A-431 ( Cat # AT3923a )



Detection limit for recombinant GST tagged SLC36A2 is 0.3 ng/ml as a capture antibody.

### SLC36A2 Antibody (monoclonal) (M04) - Background

This gene encodes a pH-dependent proton-coupled amino acid transporter that belongs to the amino acid auxin permease 1 protein family. The encoded protein primarily transports small amino acids such as glycine, alanine and proline. Mutations in this gene are associated with iminoglycinuria and hyperglycinuria.

#### **SLC36A2 Antibody (monoclonal) (M04) - References**

Fine mapping of the CELIAC2 locus on chromosome 5q31-q33 in the Finnish and Hungarian populations. Koskinen LL, et al. Tissue Antigens, 2009 Nov. PMID 19845895. Coeliac disease-associated risk variants in TNFAIP3 and REL implicate altered NF-kappaB signalling. Trynka G, et al. Gut, 2009 Aug. PMID 19240061. Amino acid transport across mammalian intestinal and renal epithelia. Br?er S. Physiol Rev, 2008 Jan. PMID 18195088. Organization and expression of the SLC36 cluster of amino acid transporter genes. Bermingham JR Jr, et al. Mamm Genome, 2004 Feb. PMID 15058382. The proton/amino acid cotransporter PAT2 is expressed in neurons with a different subcellular localization than its paralog PAT1. Rubio-Aliaga I, et al. J Biol Chem, 2004 Jan 23. PMID 14600155.