

SLC6A4 Antibody (monoclonal) (M06)**Mouse monoclonal antibody raised against a partial recombinant SLC6A4.****Catalog # AT3931a****Specification**

SLC6A4 Antibody (monoclonal) (M06) - Product Information

Application	E
Primary Accession	P31645
Other Accession	NM_001045
Reactivity	Human
Host	mouse
Clonality	Monoclonal
Isotype	IgG2a Kappa
Calculated MW	70325

SLC6A4 Antibody (monoclonal) (M06) - Additional Information**Gene ID** 6532**Other Names**

Sodium-dependent serotonin transporter, 5HT transporter, 5HTT, Solute carrier family 6 member 4, SLC6A4, HTT, SERT

Target/Specificity

SLC6A4 (NP_001036, 181 a.a. ~ 252 a.a) partial recombinant protein with GST tag. MW of the GST tag alone is 26 KDa.

Format

Clear, colorless solution in phosphate buffered saline, pH 7.2 .

Storage

Store at -20°C or lower. Aliquot to avoid repeated freezing and thawing.

Precautions

SLC6A4 Antibody (monoclonal) (M06) is for research use only and not for use in diagnostic or therapeutic procedures.

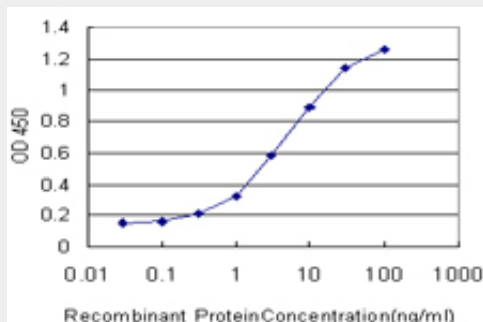
SLC6A4 Antibody (monoclonal) (M06) - Protocols

Provided below are standard protocols that you may find useful for product applications.

- [Western Blot](#)
- [Blocking Peptides](#)
- [Dot Blot](#)
- [Immunohistochemistry](#)
- [Immunofluorescence](#)
- [Immunoprecipitation](#)

- [Flow Cytometry](#)
- [Cell Culture](#)

SLC6A4 Antibody (monoclonal) (M06) - Images



Detection limit for recombinant GST tagged SLC6A4 is approximately 0.3ng/ml as a capture antibody.

SLC6A4 Antibody (monoclonal) (M06) - Background

This gene encodes an integral membrane protein that transports the neurotransmitter serotonin from synaptic spaces into presynaptic neurons. The encoded protein terminates the action of serotonin and recycles it in a sodium-dependent manner. This protein is a target of psychomotor stimulants, such as amphetamines and cocaine, and is a member of the sodium:neurotransmitter symporter family. A repeat length polymorphism in the promoter of this gene has been shown to affect the rate of serotonin uptake and may play a role in sudden infant death syndrome, aggressive behavior in Alzheimer disease patients, and depression-susceptibility in people experiencing emotional trauma.

SLC6A4 Antibody (monoclonal) (M06) - References

Panic disorder and serotonergic genes (SLC6A4, HTR1A and HTR2A): Association and interaction with childhood trauma and parenting. Blaya C, et al. *Neurosci Lett*, 2010 Sep 10. PMID 20817074. Serotonin transporter polymorphism as a predictor for escitalopram treatment of major depressive disorder comorbid with alcohol dependence. Muhonen LH, et al. *Psychiatry Res*, 2010 Aug 26. PMID 20800901. Evidence for plasticity genotypes in a gene-gene-environment interaction: the TRAILS study. Nederhof E, et al. *Genes Brain Behav*, 2010 Aug 4. PMID 20738408. [Interaction effect of serotonin transporter gene and brain-derived neurotrophic factor on the platelet serotonin content in stroke patients] . Zh Nevrol Psikhiatr Im S S Korsakova, 2010. PMID 20738025. Association between serotonin transporter polymorphisms and problem behavior in adult males with intellectual disabilities. May ME, et al. *Brain Res*, 2010 Aug 21. PMID 20735998.