

**SNCG Antibody (monoclonal) (M01)****Mouse monoclonal antibody raised against a partial recombinant SNCG.****Catalog # AT3980a****Specification**

---

**SNCG Antibody (monoclonal) (M01) - Product Information**

Application	WB
Primary Accession	<a href="#">O76070</a>
Other Accession	<a href="#">BC014098</a>
Reactivity	Human
Host	mouse
Clonality	Monoclonal
Isotype	IgG2a Kappa
Calculated MW	13331

**SNCG Antibody (monoclonal) (M01) - Additional Information****Gene ID** 6623**Other Names**

Gamma-synuclein, Breast cancer-specific gene 1 protein, Persyn, Synoretin, SR, SNCG, BCSG1, PERSYN, PRSN

**Target/Specificity**

SNCG (AAH14098, 21 a.a. ~ 127 a.a) partial recombinant protein with GST tag. MW of the GST tag alone is 26 KDa.

**Dilution**

WB~~1:500~1000

**Format**

Clear, colorless solution in phosphate buffered saline, pH 7.2 .

**Storage**

Store at -20°C or lower. Aliquot to avoid repeated freezing and thawing.

**Precautions**

SNCG Antibody (monoclonal) (M01) is for research use only and not for use in diagnostic or therapeutic procedures.

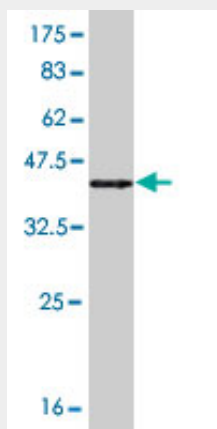
**SNCG Antibody (monoclonal) (M01) - Protocols**

Provided below are standard protocols that you may find useful for product applications.

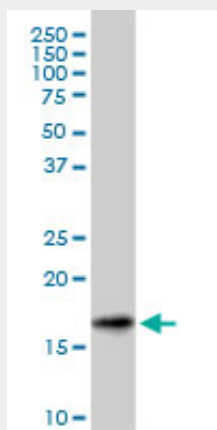
- [Western Blot](#)
- [Blocking Peptides](#)
- [Dot Blot](#)

- [Immunohistochemistry](#)
- [Immunofluorescence](#)
- [Immunoprecipitation](#)
- [Flow Cytometry](#)
- [Cell Culture](#)

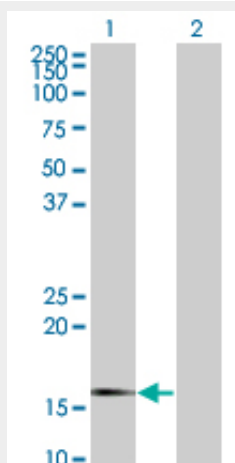
## **SNCG Antibody (monoclonal) (M01) - Images**



Antibody Reactive Against Recombinant Protein. Western Blot detection against Immunogen (37.4 KDa) .



SNCG monoclonal antibody (M01), clone 2C3. Western Blot analysis of SNCG expression in human spleen.



Western Blot analysis of SNCG expression in transfected 293T cell line by SNCG monoclonal antibody (M01), clone 2C3.

Lane 1: SNCG transfected lysate(13.3 KDa).

Lane 2: Non-transfected lysate.

### **SNCG Antibody (monoclonal) (M01) - Background**

This gene encodes a member of the synuclein family of proteins which are believed to be involved in the pathogenesis of neurodegenerative diseases. Mutations in this gene have also been associated with breast tumor development.

### **SNCG Antibody (monoclonal) (M01) - References**

Association of alpha-, beta-, and gamma-Synuclein with diffuse lewy body disease. Nishioka K, et al. Arch Neurol, 2010 Aug. PMID 20697047.Expression of alpha-, beta- and gamma-synuclein in colorectal cancer, and potential clinical significance in progression of the disease. Ye Q, et al. Oncol Rep, 2010 Feb. PMID 20043104.Expression of gamma-synuclein in colorectal cancer tissues and its role on colorectal cancer cell line HCT116. Ye Q, et al. World J Gastroenterol, 2009 Oct 28. PMID 19859996.Tumor cell-microenvironment interaction models coupled with clinical validation reveal CCL2 and SNCG as two predictors of colorectal cancer hepatic metastasis. Hu H, et al. Clin Cancer Res, 2009 Sep 1. PMID 19706805.Partial regulation of serotonin transporter function by gamma-synuclein. Wersinger C, et al. Neurosci Lett, 2009 Apr 10. PMID 19429025.