

**SOCS6 Antibody (monoclonal) (M01)****Mouse monoclonal antibody raised against a full length recombinant SOCS6.****Catalog # AT3991a****Specification**

---

**SOCS6 Antibody (monoclonal) (M01) - Product Information**

Application	WB, E
Primary Accession	<a href="#">O14544</a>
Other Accession	<a href="#">BC020082</a>
Reactivity	Human
Host	mouse
Clonality	Monoclonal
Isotype	IgG2a kappa
Calculated MW	59528

**SOCS6 Antibody (monoclonal) (M01) - Additional Information****Gene ID** 9306**Other Names**

Suppressor of cytokine signaling 6, SOCS-6, Cytokine-inducible SH2 protein 4, CIS-4, Suppressor of cytokine signaling 4, SOCS-4, SOCS6, CIS4, SOCS4

**Target/Specificity**

SOCS6 (AAH20082, 1 a.a. ~ 535 a.a) full-length recombinant protein with GST tag. MW of the GST tag alone is 26 KDa.

**Dilution**

WB~~1:500~1000

**Format**

Clear, colorless solution in phosphate buffered saline, pH 7.2 .

**Storage**

Store at -20°C or lower. Aliquot to avoid repeated freezing and thawing.

**Precautions**

SOCS6 Antibody (monoclonal) (M01) is for research use only and not for use in diagnostic or therapeutic procedures.

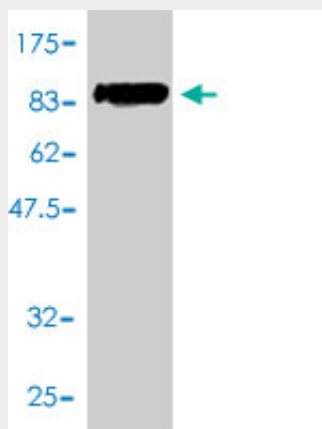
**SOCS6 Antibody (monoclonal) (M01) - Protocols**

Provided below are standard protocols that you may find useful for product applications.

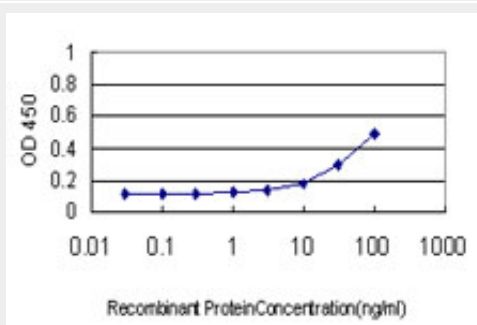
- [Western Blot](#)
- [Blocking Peptides](#)
- [Dot Blot](#)

- [Immunohistochemistry](#)
- [Immunofluorescence](#)
- [Immunoprecipitation](#)
- [Flow Cytometry](#)
- [Cell Culture](#)

### SOCS6 Antibody (monoclonal) (M01) - Images



Antibody Reactive Against Recombinant Protein. Western Blot detection against Immunogen (84.59 kDa) .



Detection limit for recombinant GST tagged SOCS6 is approximately 1ng/ml as a capture antibody.

### SOCS6 Antibody (monoclonal) (M01) - Background

The protein encoded by this gene contains a SH2 domain and a CIS homolog domain. The protein thus belongs to the cytokine-induced STAT inhibitor (CIS), also known as suppressor of cytokine signaling (SOCS) or STAT-induced STAT inhibitor (SSI), protein family. CIS family members are known to be cytokine-inducible negative regulators of cytokine signaling. The expression of this gene can be induced by GM-CSF and EPO in hematopoietic cells. A high expression level of this gene was found in factor-independent chronic myelogenous leukemia (CML) and erythroleukemia (HEL) cell lines.

### SOCS6 Antibody (monoclonal) (M01) - References

Variation at the NFATC2 Locus Increases the Risk of Thiazolidinedione-Induced Edema in the Diabetes REduction Assessment with ramipril and rosiglitazone Medication (DREAM) Study. Bailey SD, et al. Diabetes Care, 2010 Jul 13. PMID 20628086. Personalized smoking cessation: interactions between nicotine dose, dependence and quit-success genotype score. Rose JE, et al. Mol Med, 2010 Jul-Aug. PMID 20379614. SOCS-6 negatively regulates T cell activation through targeting p56lck to proteasomal degradation. Choi YB, et al. J Biol Chem, 2010 Mar 5. PMID 20007709. Gene-centric

association signals for lipids and apolipoproteins identified via the HumanCVD BeadChip. Talmud PJ, et al. Am J Hum Genet, 2009 Nov. PMID 19913121. Genomic organization and functional characterization of the promoter for the human suppressor of cytokine signaling 6 gene. Lai RH, et al. Gene, 2009 Dec 1. PMID 19716864.