

SOD3 Antibody (monoclonal) (M01)**Mouse monoclonal antibody raised against a partial recombinant SOD3.****Catalog # AT3992a****Specification**

SOD3 Antibody (monoclonal) (M01) - Product Information

Application	WB, E
Primary Accession	P08294
Other Accession	BC014418
Reactivity	Human
Host	mouse
Clonality	Monoclonal
Isotype	IgG2a Kappa
Calculated MW	25851

SOD3 Antibody (monoclonal) (M01) - Additional Information**Gene ID** 6649**Other Names**

Extracellular superoxide dismutase [Cu-Zn], EC-SOD, SOD3

Target/Specificity

SOD3 (AAH14418, 26 a.a. ~ 125 a.a) partial recombinant protein with GST tag. MW of the GST tag alone is 26 KDa.

Dilution

WB~~1:500~1000

Format

Clear, colorless solution in phosphate buffered saline, pH 7.2 .

Storage

Store at -20°C or lower. Aliquot to avoid repeated freezing and thawing.

Precautions

SOD3 Antibody (monoclonal) (M01) is for research use only and not for use in diagnostic or therapeutic procedures.

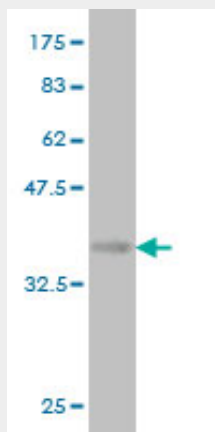
SOD3 Antibody (monoclonal) (M01) - Protocols

Provided below are standard protocols that you may find useful for product applications.

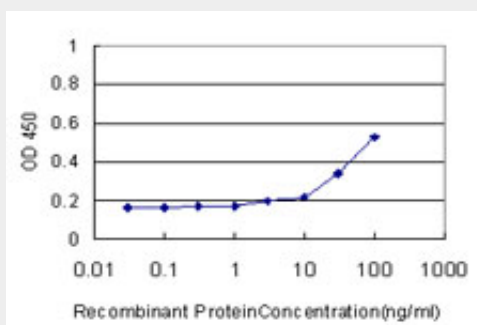
- [Western Blot](#)
- [Blocking Peptides](#)
- [Dot Blot](#)
- [Immunohistochemistry](#)

- [Immunofluorescence](#)
- [Immunoprecipitation](#)
- [Flow Cytometry](#)
- [Cell Culture](#)

SOD3 Antibody (monoclonal) (M01) - Images



Antibody Reactive Against Recombinant Protein. Western Blot detection against Immunogen (36.41 kDa) .



Detection limit for recombinant GST tagged SOD3 is approximately 10 ng/ml as a capture antibody.

SOD3 Antibody (monoclonal) (M01) - Background

This gene encodes a member of the superoxide dismutase (SOD) protein family. SODs are antioxidant enzymes that catalyze the dismutation of two superoxide radicals into hydrogen peroxide and oxygen. The product of this gene is thought to protect the brain, lungs, and other tissues from oxidative stress. The protein is secreted into the extracellular space and forms a glycosylated homotetramer that is anchored to the extracellular matrix (ECM) and cell surfaces through an interaction with heparan sulfate proteoglycan and collagen. A fraction of the protein is cleaved near the C-terminus before secretion to generate circulating tetramers that do not interact with the ECM.

SOD3 Antibody (monoclonal) (M01) - References

A genetic association study of maternal and fetal candidate genes that predispose to preterm prelabor rupture of membranes (PROM). Romero R, et al. Am J Obstet Gynecol, 2010 Jul 29. PMID 20673868. Polymorphisms in the superoxide dismutase-3 gene are associated with emphysema in COPD. S?rheim IC, et al. COPD, 2010 Aug. PMID 20673035. Variation at the NFATC2 Locus Increases the Risk of Thiazolidinedione-Induced Edema in the Diabetes REduction Assessment with ramipril and rosiglitazone Medication (DREAM) Study. Bailey SD, et al. Diabetes Care, 2010 Jul 13. PMID

20628086. Common polymorphisms in ITGA2, PON1 and THBS2 are associated with coronary atherosclerosis in a candidate gene association study of the Chinese Han population. Wang Y, et al. J Hum Genet, 2010 Aug. PMID 20485444. Single-nucleotide polymorphisms within the antioxidant defence system and associations with aggressive prostate cancer. Abe M, et al. BJU Int, 2010 May 5. PMID 20477822.