

**SP110 Antibody (monoclonal) (M02)****Mouse monoclonal antibody raised against a partial recombinant SP110.****Catalog # AT4007a****Specification**

---

**SP110 Antibody (monoclonal) (M02) - Product Information**

Application	IF, WB, E
Primary Accession	<a href="#">Q9HB58</a>
Other Accession	<a href="#">NM_004510</a>
Reactivity	Human
Host	mouse
Clonality	Monoclonal
Isotype	IgG2a Kappa
Calculated MW	78396

**SP110 Antibody (monoclonal) (M02) - Additional Information****Gene ID** 3431**Other Names**

Sp110 nuclear body protein, Interferon-induced protein 41/75, Speckled 110 kDa, Transcriptional coactivator Sp110, SP110

**Target/Specificity**

SP110 (NP\_004501, 271 a.a. ~ 380 a.a) partial recombinant protein with GST tag. MW of the GST tag alone is 26 KDa.

**Dilution**

WB~~1:500~1000

**Format**

Clear, colorless solution in phosphate buffered saline, pH 7.2 .

**Storage**

Store at -20°C or lower. Aliquot to avoid repeated freezing and thawing.

**Precautions**

SP110 Antibody (monoclonal) (M02) is for research use only and not for use in diagnostic or therapeutic procedures.

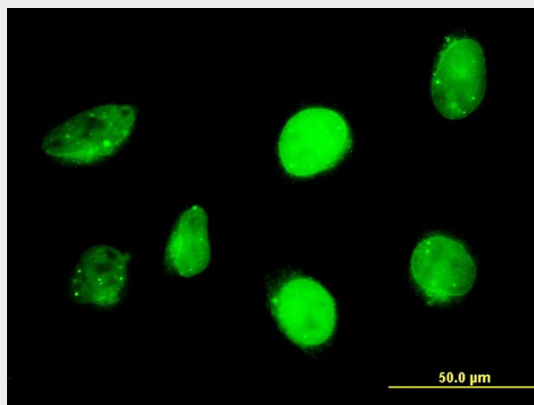
**SP110 Antibody (monoclonal) (M02) - Protocols**

Provided below are standard protocols that you may find useful for product applications.

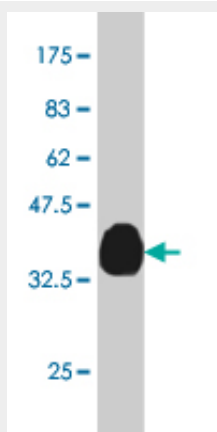
- [Western Blot](#)
- [Blocking Peptides](#)
- [Dot Blot](#)

- [Immunohistochemistry](#)
- [Immunofluorescence](#)
- [Immunoprecipitation](#)
- [Flow Cytometry](#)
- [Cell Culture](#)

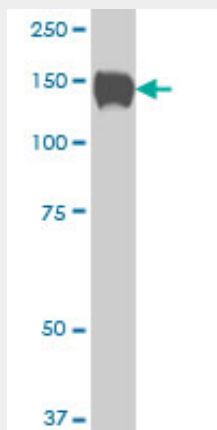
### SP110 Antibody (monoclonal) (M02) - Images



Immunofluorescence of monoclonal antibody to SP110 on HeLa cell. [antibody concentration 10 ug/ml]

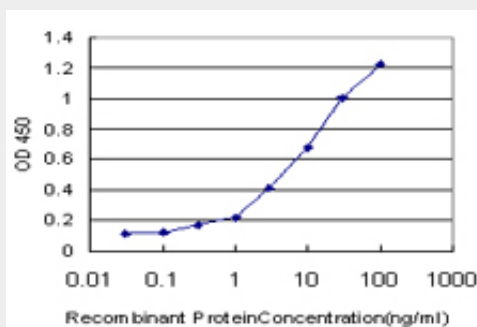


Antibody Reactive Against Recombinant Protein. Western Blot detection against Immunogen (37.84 kDa) .



SP110 monoclonal antibody (M02), clone 6F11 Western Blot analysis of SP110 expression in HeLa

S3 NE ( (Cat # AT4007a )



Detection limit for recombinant GST tagged SP110 is approximately 0.3ng/ml as a capture antibody.

### SP110 Antibody (monoclonal) (M02) - Background

The nuclear body is a multiprotein complex that may have a role in the regulation of gene transcription. This gene is a member of the SP100/SP140 family of nuclear body proteins and encodes a leukocyte-specific nuclear body component. The protein can function as an activator of gene transcription and may serve as a nuclear hormone receptor coactivator. In addition, it has been suggested that the protein may play a role in ribosome biogenesis and in the induction of myeloid cell differentiation. Alternative splicing has been observed for this gene and three transcript variants, encoding distinct isoforms, have been identified.

### SP110 Antibody (monoclonal) (M02) - References

Degree of predicted minor histocompatibility antigen mismatch correlates with poorer clinical outcomes in nonmyeloablative allogeneic hematopoietic cell transplantation. Larsen ME, et al. Biol Blood Marrow Transplant, 2010 Oct. PMID 20353833. Genetic susceptibility variants for chronic lymphocytic leukemia. Slager SL, et al. Cancer Epidemiol Biomarkers Prev, 2010 Apr. PMID 20332261. Large-scale candidate gene analysis of spontaneous clearance of hepatitis C virus. Mosbrugger TL, et al. J Infect Dis, 2010 May 1. PMID 20331378. Polymorphisms in IL-1beta, vitamin D receptor Fok1, and Toll-like receptor 2 are associated with extrapulmonary tuberculosis. Motsinger-Reif AA, et al. BMC Med Genet, 2010 Mar 2. PMID 20196868. A genome-wide association study identifies six susceptibility loci for chronic lymphocytic leukemia. Di Bernardo MC, et al. Nat Genet, 2008 Oct. PMID 18758461.