

**SPDEF Antibody (monoclonal) (M01)****Mouse monoclonal antibody raised against a partial recombinant SPDEF.****Catalog # AT4018a****Specification**

---

**SPDEF Antibody (monoclonal) (M01) - Product Information**

Application	WB, E
Primary Accession	<a href="#">O95238</a>
Other Accession	<a href="#">NM_012391</a>
Reactivity	Human
Host	mouse
Clonality	Monoclonal
Isotype	IgG2b Kappa
Calculated MW	37518

**SPDEF Antibody (monoclonal) (M01) - Additional Information****Gene ID** 25803**Other Names**

SAM pointed domain-containing Ets transcription factor, Prostate epithelium-specific Ets transcription factor, Prostate-specific Ets, Prostate-derived Ets factor, SPDEF, PDEF, PSE

**Target/Specificity**

SPDEF (NP\_036523, 92 a.a. ~ 200 a.a) partial recombinant protein with GST tag. MW of the GST tag alone is 26 KDa.

**Dilution**

WB~~1:500~1000

**Format**

Clear, colorless solution in phosphate buffered saline, pH 7.2 .

**Storage**

Store at -20°C or lower. Aliquot to avoid repeated freezing and thawing.

**Precautions**

SPDEF Antibody (monoclonal) (M01) is for research use only and not for use in diagnostic or therapeutic procedures.

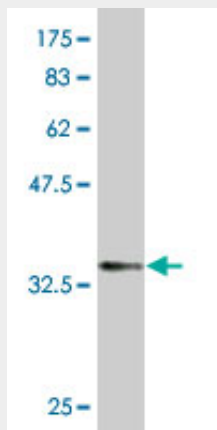
**SPDEF Antibody (monoclonal) (M01) - Protocols**

Provided below are standard protocols that you may find useful for product applications.

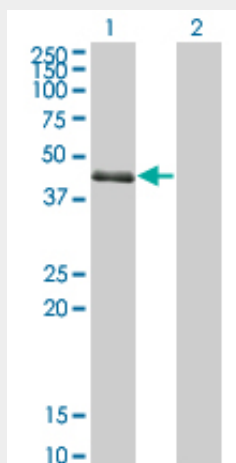
- [Western Blot](#)
- [Blocking Peptides](#)
- [Dot Blot](#)

- [Immunohistochemistry](#)
- [Immunofluorescence](#)
- [Immunoprecipitation](#)
- [Flow Cytometry](#)
- [Cell Culture](#)

### SPDEF Antibody (monoclonal) (M01) - Images



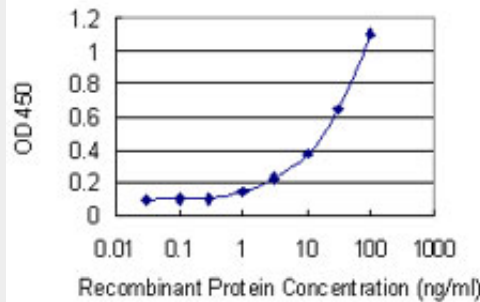
Antibody Reactive Against Recombinant Protein. Western Blot detection against Immunogen (37.73 kDa) .



Western Blot analysis of SPDEF expression in transfected 293T cell line by SPDEF monoclonal antibody (M01), clone 4A5.

Lane 1: SPDEF transfected lysate (37.518 kDa).

Lane 2: Non-transfected lysate.



Detection limit for recombinant GST tagged SPDEF is 0.3 ng/ml as a capture antibody.

### **SPDEF Antibody (monoclonal) (M01) - Background**

PDEF is an ETS transcription factor expressed in prostate epithelial cells. It acts as an androgen-independent transactivator of PSA (MIM 176820) expression.

### **SPDEF Antibody (monoclonal) (M01) - References**

Transcriptional regulation of p21/CIP1 cell cycle inhibitor by PDEF controls cell proliferation and mammary tumor progression. Schaefer JS, et al. J Biol Chem, 2010 Apr 9. PMID 20139077. PDEF is a negative regulator of colon cancer cell growth and migration. Moussa O, et al. J Cell Biochem, 2009 Dec 15. PMID 19830706. SAM pointed domain ETS factor (SPDEF) regulates terminal differentiation and maturation of intestinal goblet cells. Noah TK, et al. Exp Cell Res, 2010 Feb 1. PMID 19786015. Sam-pointed domain containing Ets transcription factor in luminal breast cancer pathogenesis. Sood AK, et al. Cancer Epidemiol Biomarkers Prev, 2009 Jun. PMID 19505923. Proteomic analysis of a PDEF Ets transcription factor-interacting protein complex. Cho JY, et al. J Proteome Res, 2009 Mar. PMID 19203193.