

SRPK1 Antibody (monoclonal) (M10)**Mouse monoclonal antibody raised against a partial recombinant SRPK1.****Catalog # AT4041a****Specification**

SRPK1 Antibody (monoclonal) (M10) - Product Information

Application	IF, WB
Primary Accession	O96SB4
Other Accession	BC038292
Reactivity	Human
Host	mouse
Clonality	Monoclonal
Isotype	IgG2b Kappa
Calculated MW	74325

SRPK1 Antibody (monoclonal) (M10) - Additional Information**Gene ID** 6732**Other Names**

SRSF protein kinase 1, SFRS protein kinase 1, Serine/arginine-rich protein-specific kinase 1, SR-protein-specific kinase 1, SRPK1 {ECO:0000312|EMBL:CAC392991}

Target/Specificity

SRPK1 (AAH38292, 371 a.a. ~ 470 a.a) partial recombinant protein with GST tag. MW of the GST tag alone is 26 KDa.

Dilution

WB~~1:500~1000

Format

Clear, colorless solution in phosphate buffered saline, pH 7.2 .

Storage

Store at -20°C or lower. Aliquot to avoid repeated freezing and thawing.

Precautions

SRPK1 Antibody (monoclonal) (M10) is for research use only and not for use in diagnostic or therapeutic procedures.

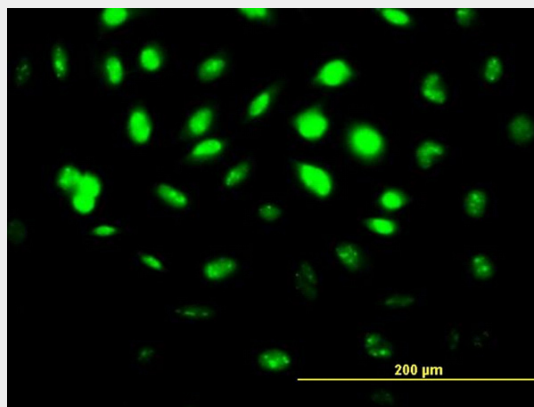
SRPK1 Antibody (monoclonal) (M10) - Protocols

Provided below are standard protocols that you may find useful for product applications.

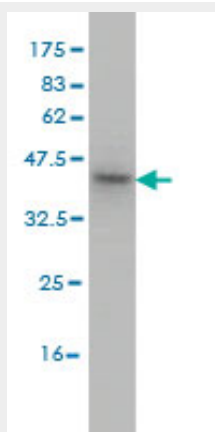
- [Western Blot](#)
- [Blocking Peptides](#)
- [Dot Blot](#)

- [Immunohistochemistry](#)
- [Immunofluorescence](#)
- [Immunoprecipitation](#)
- [Flow Cytometry](#)
- [Cell Culture](#)

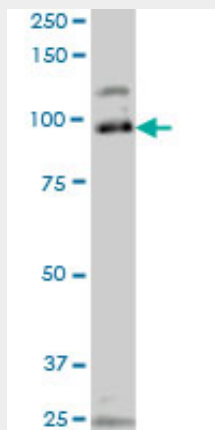
SRPK1 Antibody (monoclonal) (M10) - Images



Immunofluorescence of monoclonal antibody to SRPK1 on HeLa cell. [antibody concentration 10 ug/ml]



Antibody Reactive Against Recombinant Protein. Western Blot detection against Immunogen (36.63 KDa) .



SRPK1 monoclonal antibody (M10), clone 4G12 Western Blot analysis of SRPK1 expression in

Jurkat ((Cat # AT4041a)

SRPK1 Antibody (monoclonal) (M10) - Background

This gene encodes a serine/arginine protein kinase specific for the SR (serine/arginine-rich domain) family of splicing factors. The protein localizes to the nucleus and the cytoplasm. It is thought to play a role in regulation of both constitutive and alternative splicing by regulating intracellular localization of splicing factors. Alternative splicing of this gene results in multiple transcript variants. Additional alternatively spliced transcript variants have been described for this gene, but their full length nature have not been determined.

SRPK1 Antibody (monoclonal) (M10) - References

Personalized smoking cessation: interactions between nicotine dose, dependence and quit-success genotype score. Rose JE, et al. Mol Med, 2010 Jul-Aug. PMID 20379614. The enzymatic activity of SR protein kinases 1 and 1a is negatively affected by interaction with scaffold attachment factors B1 and 2. Tsianou D, et al. FEBS J, 2009 Sep. PMID 19674106. Arginine methylation of the ICP27 RGG box regulates the functional interactions of ICP27 with SRPK1 and Aly/REF during herpes simplex virus 1 infection. Souki SK, et al. J Virol, 2009 Sep. PMID 19553338. Regiospecific phosphorylation control of the SR protein ASF/SF2 by SRPK1. Ma CT, et al. J Mol Biol, 2009 Jul 24. PMID 19477182. Regulation of SR protein phosphorylation and alternative splicing by modulating kinetic interactions of SRPK1 with molecular chaperones. Zhong XY, et al. Genes Dev, 2009 Feb 15. PMID 19240134.