

STAG1 Antibody (monoclonal) (M01)**Mouse monoclonal antibody raised against a partial recombinant STAG1.****Catalog # AT4055a****Specification**

STAG1 Antibody (monoclonal) (M01) - Product Information

Application	IF, WB, IHC, E
Primary Accession	Q8WVM7
Other Accession	BC064699
Reactivity	Human
Host	Mouse
Clonality	Monoclonal
Isotype	IgG2b Kappa
Calculated MW	144427

STAG1 Antibody (monoclonal) (M01) - Additional Information**Gene ID** 10274**Other Names**

Cohesin subunit SA-1, SCC3 homolog 1, Stromal antigen 1, STAG1, SA1

Target/Specificity

STAG1 (AAH64699, 1112 a.a. ~ 1221 a.a) partial recombinant protein with GST tag. MW of the GST tag alone is 26 KDa.

Dilution

WB~~1:500~1000

Format

Clear, colorless solution in phosphate buffered saline, pH 7.2 .

Storage

Store at -20°C or lower. Aliquot to avoid repeated freezing and thawing.

Precautions

STAG1 Antibody (monoclonal) (M01) is for research use only and not for use in diagnostic or therapeutic procedures.

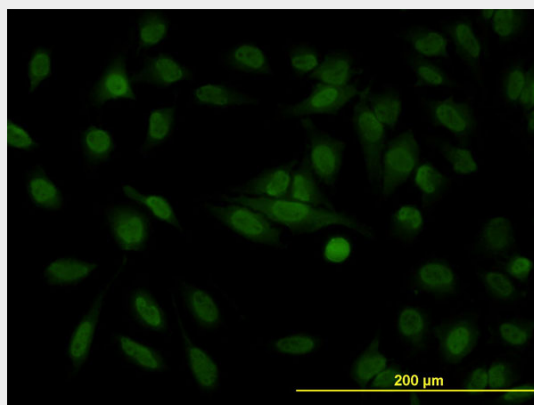
STAG1 Antibody (monoclonal) (M01) - Protocols

Provided below are standard protocols that you may find useful for product applications.

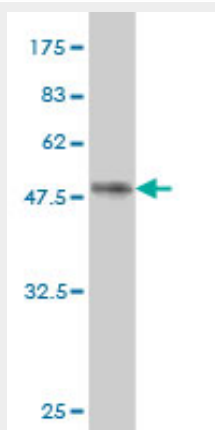
- [Western Blot](#)
- [Blocking Peptides](#)
- [Dot Blot](#)
- [Immunohistochemistry](#)

- [Immunofluorescence](#)
- [Immunoprecipitation](#)
- [Flow Cytometry](#)
- [Cell Culture](#)

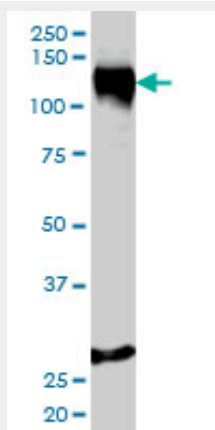
STAG1 Antibody (monoclonal) (M01) - Images



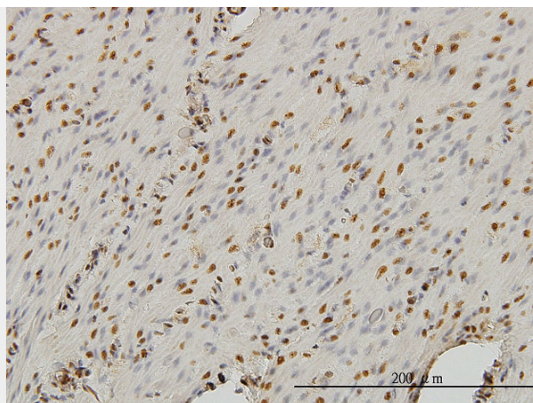
Immunofluorescence of monoclonal antibody to STAG1 on HeLa cell. [antibody concentration 10 ug/ml]



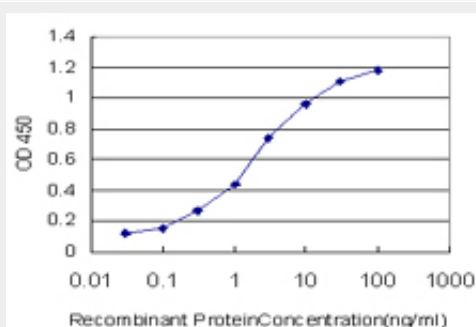
Antibody Reactive Against Recombinant Protein. Western Blot detection against Immunogen (37.73 KDa) .



STAG1 monoclonal antibody (M01), clone 2E9 Western Blot analysis of STAG1 expression in HeLa (Cat # AT4055a)



Immunoperoxidase of monoclonal antibody to STAG1 on formalin-fixed paraffin-embedded human smooth muscle. [antibody concentration 3 ug/ml]



Detection limit for recombinant GST tagged STAG1 is approximately 0.03ng/ml as a capture antibody.

STAG1 Antibody (monoclonal) (M01) - Background

This gene is a member of the SCC3 family and is expressed in the nucleus. It encodes a component of cohesin, a multisubunit protein complex that provides sister chromatid cohesion along the length of a chromosome from DNA replication through prophase and prometaphase, after which it is dissociated in preparation for segregation during anaphase.

STAG1 Antibody (monoclonal) (M01) - References

Forty-three loci associated with plasma lipoprotein size, concentration, and cholesterol content in genome-wide analysis. Chasman DI, et al. PLoS Genet, 2009 Nov. PMID 19936222. Differential regulation of telomere and centromere cohesion by the Scc3 homologues SA1 and SA2, respectively, in human cells. Canudas S, et al. J Cell Biol, 2009 Oct 19. PMID 19822671. CTCF physically links cohesin to chromatin. Rubio ED, et al. Proc Natl Acad Sci U S A, 2008 Jun 17. PMID 18550811. Human Scc4 is required for cohesin binding to chromatin, sister-chromatid cohesion, and mitotic progression. Watrin E, et al. Curr Biol, 2006 May 9. PMID 16682347. Diversification of transcriptional modulation: large-scale identification and characterization of putative alternative promoters of human genes. Kimura K, et al. Genome Res, 2006 Jan. PMID 16344560.