

**STAT1 Antibody (monoclonal) (M01)****Mouse monoclonal antibody raised against a partial recombinant STAT1.****Catalog # AT4060a****Specification**

---

**STAT1 Antibody (monoclonal) (M01) - Product Information**

Application	IF, WB, E
Primary Accession	<a href="#">P42224</a>
Other Accession	<a href="#">BC002704</a>
Reactivity	Human
Host	Mouse
Clonality	Monoclonal
Isotype	IgG2a Kappa
Calculated MW	87335

**STAT1 Antibody (monoclonal) (M01) - Additional Information****Gene ID** 6772**Other Names**

Signal transducer and activator of transcription 1-alpha/beta, Transcription factor ISGF-3 components p91/p84, STAT1

**Target/Specificity**

STAT1 (AAH02704, 613 a.a. ~ 712 a.a) partial recombinant protein with GST tag. MW of the GST tag alone is 26 KDa.

**Dilution**

WB~~1:500~1000

**Format**

Clear, colorless solution in phosphate buffered saline, pH 7.2 .

**Storage**

Store at -20°C or lower. Aliquot to avoid repeated freezing and thawing.

**Precautions**

STAT1 Antibody (monoclonal) (M01) is for research use only and not for use in diagnostic or therapeutic procedures.

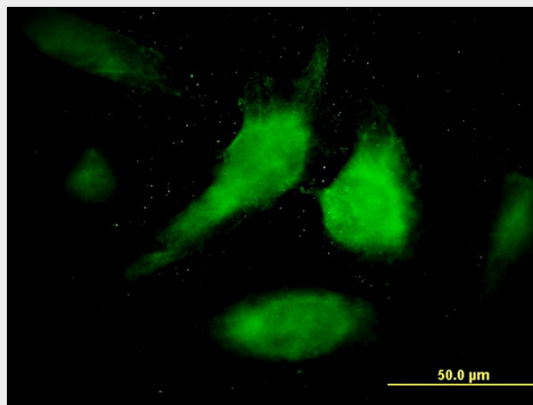
**STAT1 Antibody (monoclonal) (M01) - Protocols**

Provided below are standard protocols that you may find useful for product applications.

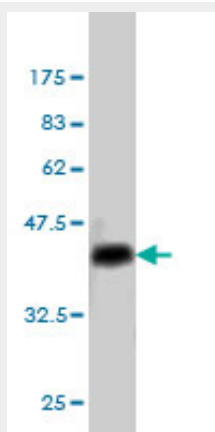
- [Western Blot](#)
- [Blocking Peptides](#)
- [Dot Blot](#)

- [Immunohistochemistry](#)
- [Immunofluorescence](#)
- [Immunoprecipitation](#)
- [Flow Cytometry](#)
- [Cell Culture](#)

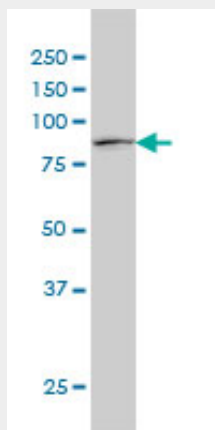
## STAT1 Antibody (monoclonal) (M01) - Images



Immunofluorescence of monoclonal antibody to STAT1 on HeLa cell. [antibody concentration 40 ug/ml]

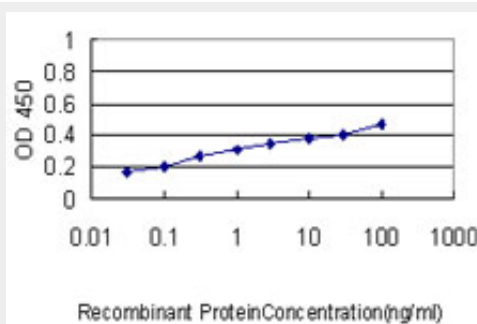


Antibody Reactive Against Recombinant Protein. Western Blot detection against Immunogen (36.63 KDa) .



STAT1 monoclonal antibody (M01), clone 1A8 Western Blot analysis of STAT1 expression in HeLa (

(Cat # AT4060a )



Detection limit for recombinant GST tagged STAT1 is approximately 0.1ng/ml as a capture antibody.

### **STAT1 Antibody (monoclonal) (M01) - Background**

The protein encoded by this gene is a member of the STAT protein family. In response to cytokines and growth factors, STAT family members are phosphorylated by the receptor associated kinases, and then form homo- or heterodimers that translocate to the cell nucleus where they act as transcription activators. This protein can be activated by various ligands including interferon-alpha, interferon-gamma, EGF, PDGF and IL6. This protein mediates the expression of a variety of genes, which is thought to be important for cell viability in response to different cell stimuli and pathogens. Two alternatively spliced transcript variants encoding distinct isoforms have been described.

### **STAT1 Antibody (monoclonal) (M01) - References**

Association of genetic polymorphisms in STAT1 gene with increased risk of hepatocellular carcinoma. Zhu ZZ, et al. Oncology, 2010. PMID 20798561. Evaluation of candidate stromal epithelial cross-talk genes identifies association between risk of serous ovarian cancer and TERT, a cancer susceptibility hot-spot. Johnatty SE, et al. PLoS Genet, 2010 Jul 8. PMID 20628624. Variation at the NFATC2 Locus Increases the Risk of Thiazolidinedione-Induced Edema in the Diabetes REduction Assessment with ramipril and rosiglitazone Medication (DREAM) Study. Bailey SD, et al. Diabetes Care, 2010 Jul 13. PMID 20628086. Dengue hemorrhagic fever is associated with polymorphisms in JAK1. Silva LK, et al. Eur J Hum Genet, 2010 Jun 30. PMID 20588308. Cooperative activation of CCL5 expression by TLR3 and tumor necrosis factor-alpha or interferon-gamma through nuclear factor-kappaB or STAT-1 in airway epithelial cells. Homma T, et al. Int Arch Allergy Immunol, 2010. PMID 20523058.