

SUMF2 Antibody (monoclonal) (M02)**Mouse monoclonal antibody raised against a partial recombinant SUMF2.****Catalog # AT4104a****Specification**

SUMF2 Antibody (monoclonal) (M02) - Product Information

Application	WB, E
Primary Accession	Q8NBJ7
Other Accession	NM_015411
Reactivity	Human
Host	mouse
Clonality	Monoclonal
Isotype	IgG2a Kappa
Calculated MW	33843

SUMF2 Antibody (monoclonal) (M02) - Additional Information**Gene ID** 25870**Other Names**

Sulfatase-modifying factor 2, C-alpha-formylglycine-generating enzyme 2, SUMF2

Target/Specificity

SUMF2 (NP_056226, 26 a.a. ~ 125 a.a) partial recombinant protein with GST tag. MW of the GST tag alone is 26 KDa.

Dilution

WB~~1:500~1000

Format

Clear, colorless solution in phosphate buffered saline, pH 7.2 .

Storage

Store at -20°C or lower. Aliquot to avoid repeated freezing and thawing.

Precautions

SUMF2 Antibody (monoclonal) (M02) is for research use only and not for use in diagnostic or therapeutic procedures.

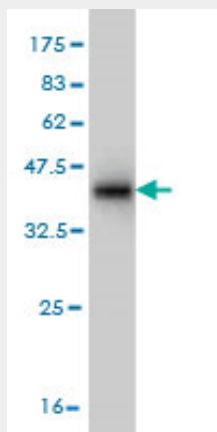
SUMF2 Antibody (monoclonal) (M02) - Protocols

Provided below are standard protocols that you may find useful for product applications.

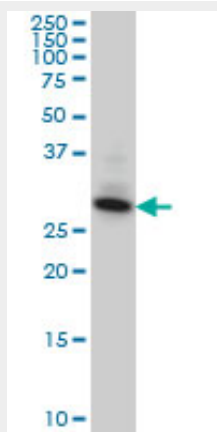
- [Western Blot](#)
- [Blocking Peptides](#)
- [Dot Blot](#)
- [Immunohistochemistry](#)

- [Immunofluorescence](#)
- [Immunoprecipitation](#)
- [Flow Cytometry](#)
- [Cell Culture](#)

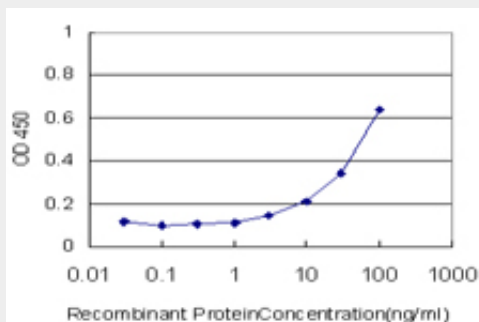
SUMF2 Antibody (monoclonal) (M02) - Images



Antibody Reactive Against Recombinant Protein. Western Blot detection against Immunogen (36.74 kDa) .



SUMF2 monoclonal antibody (M02), clone 4B3 Western Blot analysis of SUMF2 expression in A-431 (Cat # AT4104a)



Detection limit for recombinant GST tagged SUMF2 is approximately 3ng/ml as a capture antibody.

SUMF2 Antibody (monoclonal) (M02) - Background

The catalytic sites of sulfatases are only active if they contain a unique amino acid, C-alpha-formylglycine (FGly). The FGly residue is posttranslationally generated from a cysteine by enzymes with FGly-generating activity. The gene described in this record is a member of the sulfatase-modifying factor family and encodes a protein with a DUF323 domain that localizes to the lumen of the endoplasmic reticulum. This protein has low levels of FGly-generating activity but can heterodimerize with another family member - a protein with high levels of FGly-generating activity. Alternate transcriptional splice variants, encoding different isoforms, have been characterized.

SUMF2 Antibody (monoclonal) (M02) - References

SUMF2 interacts with interleukin-13 and inhibits interleukin-13 secretion in bronchial smooth muscle cells. Liang H, et al. J Cell Biochem, 2009 Dec 1. PMID 19739097. Paralog of the formylglycine-generating enzyme--retention in the endoplasmic reticulum by canonical and noncanonical signals. Gande SL, et al. FEBS J, 2008 Mar. PMID 18266766. Diversification of transcriptional modulation: large-scale identification and characterization of putative alternative promoters of human genes. Kimura K, et al. Genome Res, 2006 Jan. PMID 16344560. Signal sequence and keyword trap in silico for selection of full-length human cDNAs encoding secretion or membrane proteins from oligo-capped cDNA libraries. Otsuki T, et al. DNA Res, 2005. PMID 16303743. A human protein-protein interaction network: a resource for annotating the proteome. Stelzl U, et al. Cell, 2005 Sep 23. PMID 16169070.