

**SYNGR2 Antibody (monoclonal) (M01)****Mouse monoclonal antibody raised against a partial recombinant SYNGR2.****Catalog # AT4122a****Specification**

---

**SYNGR2 Antibody (monoclonal) (M01) - Product Information**

Application	WB, E
Primary Accession	<a href="#">O43760</a>
Other Accession	<a href="#">NM_004710</a>
Reactivity	Human
Host	mouse
Clonality	Monoclonal
Isotype	IgG3 Kappa
Calculated MW	24810

**SYNGR2 Antibody (monoclonal) (M01) - Additional Information****Gene ID** 9144**Other Names**

Synaptogyrin-2, Cellugyrin, SYNGR2

**Target/Specificity**

SYNGR2 (NP\_004701, 168 a.a. ~ 224 a.a) partial recombinant protein with GST tag. MW of the GST tag alone is 26 KDa.

**Dilution**

WB~~1:500~1000

**Format**

Clear, colorless solution in phosphate buffered saline, pH 7.2 .

**Storage**

Store at -20°C or lower. Aliquot to avoid repeated freezing and thawing.

**Precautions**

SYNGR2 Antibody (monoclonal) (M01) is for research use only and not for use in diagnostic or therapeutic procedures.

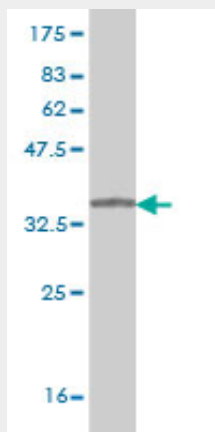
**SYNGR2 Antibody (monoclonal) (M01) - Protocols**

Provided below are standard protocols that you may find useful for product applications.

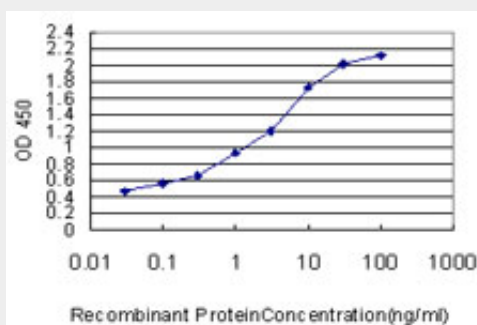
- [Western Blot](#)
- [Blocking Peptides](#)
- [Dot Blot](#)
- [Immunohistochemistry](#)

- [Immunofluorescence](#)
- [Immunoprecipitation](#)
- [Flow Cytometry](#)
- [Cell Culture](#)

### **SYNGR2 Antibody (monoclonal) (M01) - Images**



Antibody Reactive Against Recombinant Protein. Western Blot detection against Immunogen (32.01 KDa) .



Detection limit for recombinant GST tagged SYNGR2 is approximately 0.03ng/ml as a capture antibody.

### **SYNGR2 Antibody (monoclonal) (M01) - Background**

This gene encodes an integral membrane protein containing four transmembrane regions and a C-terminal cytoplasmic tail that is tyrosine phosphorylated. The exact function of this protein is unclear, but studies of a similar rat protein suggest that it may play a role in regulating membrane traffic in non-neuronal cells. The gene belongs to the synaptogyrin gene family.

### **SYNGR2 Antibody (monoclonal) (M01) - References**

The status, quality, and expansion of the NIH full-length cDNA project: the Mammalian Gene Collection (MGC). Gerhard DS, et al. Genome Res, 2004 Oct. PMID 15489334. The secreted protein discovery initiative (SPDI), a large-scale effort to identify novel human secreted and transmembrane proteins: a bioinformatics assessment. Clark HF, et al. Genome Res, 2003 Oct. PMID 12975309. Generation and initial analysis of more than 15,000 full-length human and mouse cDNA sequences. Strausberg RL, et al. Proc Natl Acad Sci U S A, 2002 Dec 24. PMID 12477932. Characterization of the human synaptogyrin gene family. Kedra D, et al. Hum Genet, 1998 Aug. PMID 9760194. Cellugyrin, a novel ubiquitous form of synaptogyrin that is phosphorylated by pp60c-src. Janz R, et al. J Biol Chem, 1998 Jan 30. PMID 9446595.