

**TADA3L Antibody (monoclonal) (M02)****Mouse monoclonal antibody raised against a full-length recombinant TADA3L.****Catalog # AT4135a****Specification**

---

**TADA3L Antibody (monoclonal) (M02) - Product Information**

Application	WB, E
Primary Accession	<a href="#">O75528</a>
Other Accession	<a href="#">BC013433</a>
Reactivity	Human
Host	mouse
Clonality	Monoclonal
Isotype	IgG2a Kappa
Calculated MW	48902

**TADA3L Antibody (monoclonal) (M02) - Additional Information****Gene ID** 10474**Other Names**

Transcriptional adapter 3, ADA3 homolog, hADA3, STAF54, Transcriptional adapter 3-like, ADA3-like protein, TADA3, ADA3, TADA3L

**Target/Specificity**

TADA3L (AAH13433, 1 a.a. ~ 432 a.a) full-length recombinant protein with GST tag. MW of the GST tag alone is 26 KDa.

**Dilution**

WB~~1:500~1000

**Format**

Clear, colorless solution in phosphate buffered saline, pH 7.2 .

**Storage**

Store at -20°C or lower. Aliquot to avoid repeated freezing and thawing.

**Precautions**

TADA3L Antibody (monoclonal) (M02) is for research use only and not for use in diagnostic or therapeutic procedures.

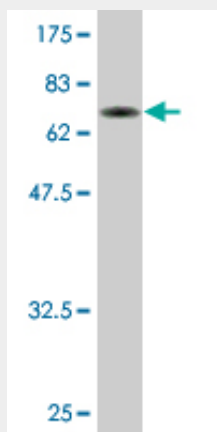
**TADA3L Antibody (monoclonal) (M02) - Protocols**

Provided below are standard protocols that you may find useful for product applications.

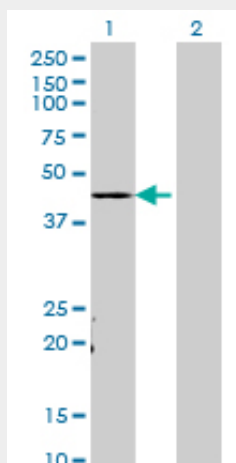
- [Western Blot](#)
- [Blocking Peptides](#)
- [Dot Blot](#)

- [Immunohistochemistry](#)
- [Immunofluorescence](#)
- [Immunoprecipitation](#)
- [Flow Cytometry](#)
- [Cell Culture](#)

### TADA3L Antibody (monoclonal) (M02) - Images



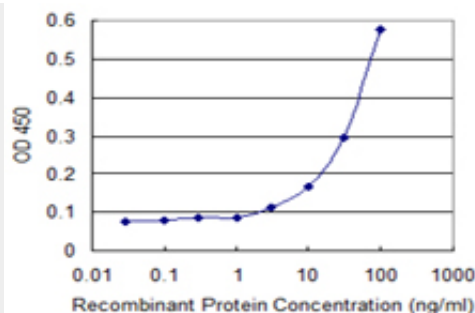
Antibody Reactive Against Recombinant Protein. Western Blot detection against Immunogen (73.26 kDa) .



Western Blot analysis of TADA3L expression in transfected 293T cell line by TADA3L monoclonal antibody (M02), clone 3H3.

Lane 1: TADA3L transfected lysate(41.4 kDa).

Lane 2: Non-transfected lysate.



Detection limit for recombinant GST tagged TADA3L is 1 ng/ml as a capture antibody.

### **TADA3L Antibody (monoclonal) (M02) - Background**

Many DNA-binding transcriptional activator proteins enhance the initiation rate of RNA polymerase II-mediated gene transcription by interacting functionally with the general transcription machinery bound at the basal promoter. Adaptor proteins are usually required for this activation, possibly to acetylate and destabilize nucleosomes, thereby relieving chromatin constraints at the promoter. The protein encoded by this gene is a transcriptional activator adaptor and has been found to be part of the PCAF histone acetylase complex. In addition, it associates with the tumor suppressor protein p53 and is required for full activity of p53 and p53-mediated apoptosis. At least four alternatively spliced variants have been found for this gene, but the full-length nature of some variants has not been determined.

### **TADA3L Antibody (monoclonal) (M02) - References**

Variation at the NFATC2 Locus Increases the Risk of Thiazolinedione-Induced Edema in the Diabetes REduction Assessment with ramipril and rosiglitazone Medication (DREAM) Study. Bailey SD, et al. Diabetes Care, 2010 Jul 13. PMID 20628086. Gene-centric association signals for lipids and apolipoproteins identified via the HumanCVD BeadChip. Talmud PJ, et al. Am J Hum Genet, 2009 Nov. PMID 19913121. Defining the human deubiquitinating enzyme interaction landscape. Sowa ME, et al. Cell, 2009 Jul 23. PMID 19615732. HPV16 E6-induced and E6AP-dependent inhibition of the transcriptional coactivator hADA3 in human cervical carcinoma cells. Hu Y, et al. Cancer Invest, 2009 Mar. PMID 19194825. Ankyrin repeats-containing cofactors interact with ADA3 and modulate its co-activator function. Li CW, et al. Biochem J, 2008 Jul 15. PMID 18377363.