

TBL1X Antibody (monoclonal) (M07)**Mouse monoclonal antibody raised against a partial recombinant TBL1X.****Catalog # AT4162a****Specification**

TBL1X Antibody (monoclonal) (M07) - Product Information

Application	IHC, E
Primary Accession	O60907
Other Accession	NM_005647
Reactivity	Human
Host	mouse
Clonality	Monoclonal
Isotype	IgG2b Kappa
Calculated MW	62496

TBL1X Antibody (monoclonal) (M07) - Additional Information**Gene ID** 6907**Other Names**

F-box-like/WD repeat-containing protein TBL1X, SMAP55, Transducin beta-like protein 1X, Transducin-beta-like protein 1, X-linked, TBL1X, TBL1

Target/Specificity

TBL1X (NP_005638, 478 a.a. ~ 577 a.a) partial recombinant protein with GST tag. MW of the GST tag alone is 26 KDa.

Format

Clear, colorless solution in phosphate buffered saline, pH 7.2 .

Storage

Store at -20°C or lower. Aliquot to avoid repeated freezing and thawing.

Precautions

TBL1X Antibody (monoclonal) (M07) is for research use only and not for use in diagnostic or therapeutic procedures.

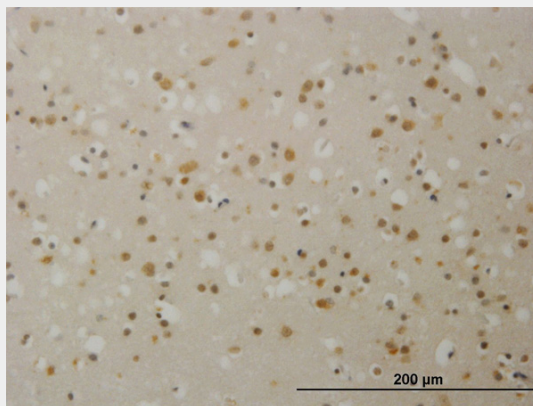
TBL1X Antibody (monoclonal) (M07) - Protocols

Provided below are standard protocols that you may find useful for product applications.

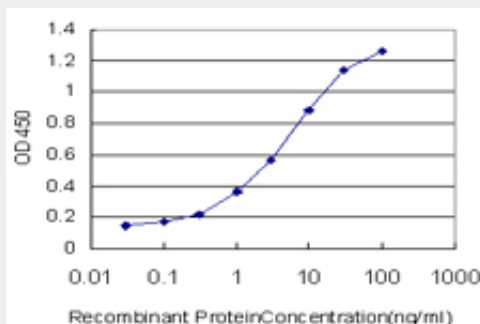
- [Western Blot](#)
- [Blocking Peptides](#)
- [Dot Blot](#)
- [Immunohistochemistry](#)
- [Immunofluorescence](#)
- [Immunoprecipitation](#)

- [Flow Cytometry](#)
- [Cell Culture](#)

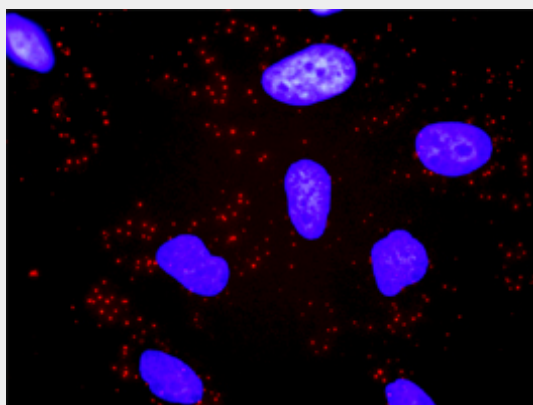
TBL1X Antibody (monoclonal) (M07) - Images



Immunoperoxidase of monoclonal antibody to TBL1X on formalin-fixed paraffin-embedded human cerebral cortex. [antibody concentration 1.5 ug/ml]



Detection limit for recombinant GST tagged TBL1X is approximately 0.3ng/ml as a capture antibody.



Proximity Ligation Analysis of protein-protein interactions between CACYBP and TBL1X HeLa cells were stained with anti-CACYBP rabbit purified polyclonal 1:1200 and anti-TBL1X mouse monoclonal antibody 1:50. Each red dot represents the detection of protein-protein interaction complex, and nuclei were counterstained with DAPI (blue).

TBL1X Antibody (monoclonal) (M07) - Background

The protein encoded by this gene has sequence similarity with members of the WD40 repeat-containing protein family. The WD40 group is a large family of proteins, which appear to

have a regulatory function. It is believed that the WD40 repeats mediate protein-protein interactions and members of the family are involved in signal transduction, RNA processing, gene regulation, vesicular trafficking, cytoskeletal assembly and may play a role in the control of cytotypic differentiation. This encoded protein is found as a subunit in corepressor SMRT (silencing mediator for retinoid and thyroid receptors) complex along with histone deacetylase 3 protein. This gene is located adjacent to the ocular albinism gene and it is thought to be involved in the pathogenesis of the ocular albinism with late-onset sensorineural deafness phenotype. Four transcript variants encoding two different isoforms have been found for this gene. This gene is highly similar to the Y chromosome TBL1Y gene.

TBL1X Antibody (monoclonal) (M07) - References

TBL1 and TBLR1 phosphorylation on regulated gene promoters overcomes dual CtBP and NCoR/SMRT transcriptional repression checkpoints. Perissi V, et al. Mol Cell, 2008 Mar 28. PMID 18374649. Histone deacetylase 3 localizes to the mitotic spindle and is required for kinetochore-microtubule attachment. Ishii S, et al. Proc Natl Acad Sci U S A, 2008 Mar 18. PMID 18326024. TBL1-TBLR1 and beta-catenin recruit each other to Wnt target-gene promoter for transcription activation and oncogenesis. Li J, et al. Nat Cell Biol, 2008 Feb. PMID 18193033. Novel functional features of the Lis-H domain: role in protein dimerization, half-life and cellular localization. Gerlitz G, et al. Cell Cycle, 2005 Nov. PMID 16258276. Reading and function of a histone code involved in targeting corepressor complexes for repression. Yoon HG, et al. Mol Cell Biol, 2005 Jan. PMID 15601853.