

**TIMP1 Antibody (monoclonal) (M01)****Mouse monoclonal antibody raised against a full length recombinant TIMP1.****Catalog # AT4241a****Specification**

---

**TIMP1 Antibody (monoclonal) (M01) - Product Information**

Application	IP, WB, E
Primary Accession	<a href="#">P01033</a>
Other Accession	<a href="#">BC007097</a>
Reactivity	Human
Host	mouse
Clonality	Monoclonal
Isotype	IgG1 Kappa
Calculated MW	23171

**TIMP1 Antibody (monoclonal) (M01) - Additional Information****Gene ID** 7076**Other Names**

Metalloproteinase inhibitor 1, Erythroid-potentiating activity, EPA, Fibroblast collagenase inhibitor, Collagenase inhibitor, Tissue inhibitor of metalloproteinases 1, TIMP-1, TIMP1, CLGI, TIMP

**Target/Specificity**

TIMP1 (AAH07097, 1 a.a. ~ 169 a.a) full-length recombinant protein with GST tag. MW of the GST tag alone is 26 KDa.

**Dilution**

WB~~1:500~1000

**Format**

Clear, colorless solution in phosphate buffered saline, pH 7.2 .

**Storage**

Store at -20°C or lower. Aliquot to avoid repeated freezing and thawing.

**Precautions**

TIMP1 Antibody (monoclonal) (M01) is for research use only and not for use in diagnostic or therapeutic procedures.

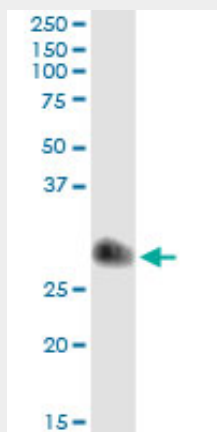
**TIMP1 Antibody (monoclonal) (M01) - Protocols**

Provided below are standard protocols that you may find useful for product applications.

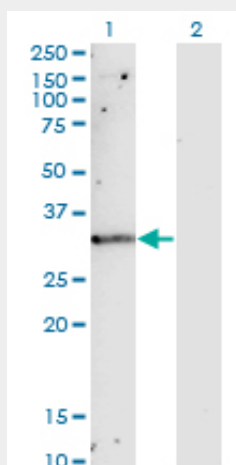
- [Western Blot](#)
- [Blocking Peptides](#)
- [Dot Blot](#)

- [Immunohistochemistry](#)
- [Immunofluorescence](#)
- [Immunoprecipitation](#)
- [Flow Cytometry](#)
- [Cell Culture](#)

### **TIMP1 Antibody (monoclonal) (M01) - Images**



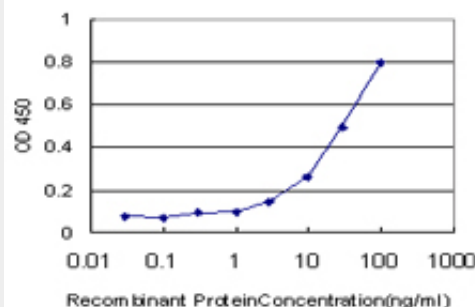
Immunoprecipitation of TIMP1 transfected lysate using anti-TIMP1 monoclonal antibody and Protein A Magnetic Bead ([U0007](#)), and immunoblotted with TIMP1 MaxPab rabbit polyclonal antibody.



Western Blot analysis of TIMP1 expression in transfected 293T cell line by TIMP1 monoclonal antibody (M01), clone 4D12.

Lane 1: TIMP1 transfected lysate(23.2 KDa).

Lane 2: Non-transfected lysate.



Detection limit for recombinant GST tagged TIMP1 is approximately 3ng/ml as a capture antibody.

### **TIMP1 Antibody (monoclonal) (M01) - Background**

This gene belongs to the TIMP gene family. The proteins encoded by this gene family are natural inhibitors of the matrix metalloproteinases (MMPs), a group of peptidases involved in degradation of the extracellular matrix. In addition to its inhibitory role against most of the known MMPs, the encoded protein is able to promote cell proliferation in a wide range of cell types, and may also have an anti-apoptotic function. Transcription of this gene is highly inducible in response to many cytokines and hormones. In addition, the expression from some but not all inactive X chromosomes suggests that this gene inactivation is polymorphic in human females. This gene is located within intron 6 of the synapsin I gene and is transcribed in the opposite direction. [provided by RefSeq]