

TLN1 Antibody (monoclonal) (M06)**Mouse monoclonal antibody raised against a partial recombinant TLN1.****Catalog # AT4253a****Specification**

TLN1 Antibody (monoclonal) (M06) - Product Information

Application	WB, IHC, E
Primary Accession	O9Y490
Other Accession	NM_006289
Reactivity	Human, Mouse, Rat
Host	mouse
Clonality	Monoclonal
Isotype	IgG3 Kappa
Calculated MW	269767

TLN1 Antibody (monoclonal) (M06) - Additional Information**Gene ID** 7094**Other Names**

Talin-1, TLN1, KIAA1027, TLN

Target/Specificity

TLN1 (NP_006280, 1052 a.a. ~ 1149 a.a) partial recombinant protein with GST tag. MW of the GST tag alone is 26 KDa.

Dilution

WB~~1:500~1000

Format

Clear, colorless solution in phosphate buffered saline, pH 7.2 .

Storage

Store at -20°C or lower. Aliquot to avoid repeated freezing and thawing.

Precautions

TLN1 Antibody (monoclonal) (M06) is for research use only and not for use in diagnostic or therapeutic procedures.

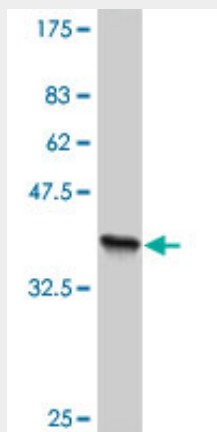
TLN1 Antibody (monoclonal) (M06) - Protocols

Provided below are standard protocols that you may find useful for product applications.

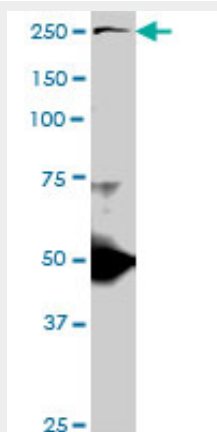
- [Western Blot](#)
- [Blocking Peptides](#)
- [Dot Blot](#)
- [Immunohistochemistry](#)

- [Immunofluorescence](#)
- [Immunoprecipitation](#)
- [Flow Cytometry](#)
- [Cell Culture](#)

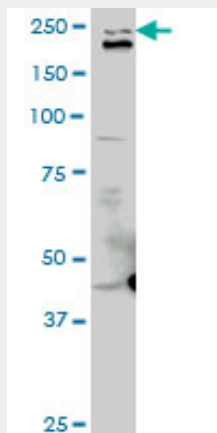
TLN1 Antibody (monoclonal) (M06) - Images



Antibody Reactive Against Recombinant Protein. Western Blot detection against Immunogen (36.52 KDa) .

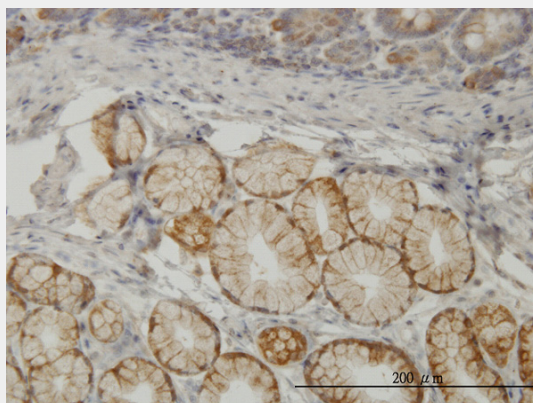


TLN1 monoclonal antibody (M06), clone 2E10. Western Blot analysis of TLN1 expression in PC-12 (Cat # AT4253a)

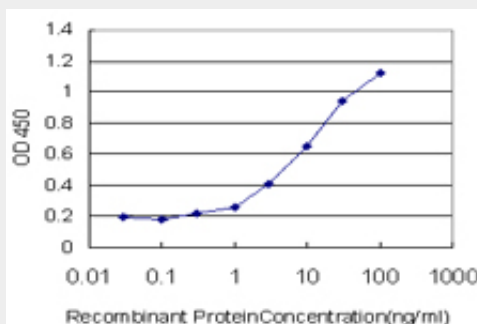


TLN1 monoclonal antibody (M06), clone 2E10. Western Blot analysis of TLN1 expression in Raw

264.7.



Immunoperoxidase of monoclonal antibody to TLN1 on formalin-fixed paraffin-embedded human small Intestine. [antibody concentration 3 ug/ml]



Detection limit for recombinant GST tagged TLN1 is approximately 0.3ng/ml as a capture antibody.

TLN1 Antibody (monoclonal) (M06) - Background

This gene encodes a cytoskeletal protein that is concentrated in areas of cell-substratum and cell-cell contacts. The encoded protein plays a significant role in the assembly of actin filaments and in spreading and migration of various cell types, including fibroblasts and osteoclasts. It codistributes with integrins in the cell surface membrane in order to assist in the attachment of adherent cells to extracellular matrices and of lymphocytes to other cells. The N-terminus of this protein contains elements for localization to cell-extracellular matrix junctions. The C-terminus contains binding sites for proteins such as beta-1-integrin, actin, and vinculin.

TLN1 Antibody (monoclonal) (M06) - References

Zap70 controls the interaction of talin with integrin to regulate the chemotactic directionality of T-cell migration. Lin YP, et al. Mol Immunol, 2010 Jul. PMID 20488542. Talin1 promotes tumor invasion and metastasis via focal adhesion signaling and anoikis resistance. Sakamoto S, et al. Cancer Res, 2010 Mar 1. PMID 20160039. Functional and structural characterization of the talin F0F1 domain. Domadia PN, et al. Biochem Biophys Res Commun, 2010 Jan 1. PMID 19903453. GATA-1, G208S macrothrombocytes are deficient in talin: immunofluorescence studies. White JG, et al. Platelets, 2009 May. PMID 19437340. Dystrophin-glycoprotein complex and vinculin-talin-integrin system in human adult cardiac muscle. Anastasi G, et al. Int J Mol Med, 2009 Feb. PMID 19148538.