

**TSSC1 Antibody (monoclonal) (M01)****Mouse monoclonal antibody raised against a partial recombinant TSSC1.****Catalog # AT4382a****Specification**

---

**TSSC1 Antibody (monoclonal) (M01) - Product Information**

Application	IF, WB, E
Primary Accession	<a href="#">Q53HC9</a>
Other Accession	<a href="#">NM_003310</a>
Reactivity	Human, Rat
Host	mouse
Clonality	Monoclonal
Isotype	IgG2a Kappa
Calculated MW	43603

**TSSC1 Antibody (monoclonal) (M01) - Additional Information****Gene ID** 7260**Other Names**

Protein TSSC1, Tumor-suppressing STF cDNA 1 protein, Tumor-suppressing subchromosomal transferable fragment candidate gene 1 protein, TSSC1

**Target/Specificity**

TSSC1 (NP\_003301, 288 a.a. ~ 387 a.a) partial recombinant protein with GST tag. MW of the GST tag alone is 26 KDa.

**Dilution**

WB~~1:500~1000

**Format**

Clear, colorless solution in phosphate buffered saline, pH 7.2 .

**Storage**

Store at -20°C or lower. Aliquot to avoid repeated freezing and thawing.

**Precautions**

TSSC1 Antibody (monoclonal) (M01) is for research use only and not for use in diagnostic or therapeutic procedures.

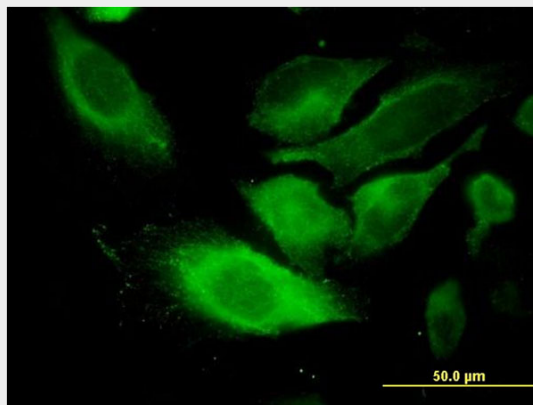
**TSSC1 Antibody (monoclonal) (M01) - Protocols**

Provided below are standard protocols that you may find useful for product applications.

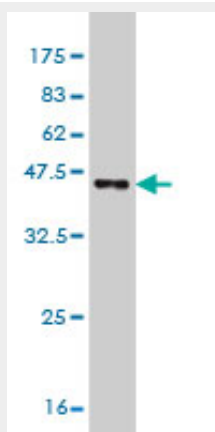
- [Western Blot](#)
- [Blocking Peptides](#)
- [Dot Blot](#)

- [Immunohistochemistry](#)
- [Immunofluorescence](#)
- [Immunoprecipitation](#)
- [Flow Cytometry](#)
- [Cell Culture](#)

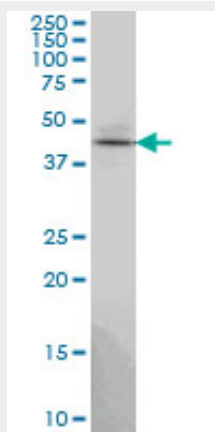
## TSSC1 Antibody (monoclonal) (M01) - Images



Immunofluorescence of monoclonal antibody to TSSC1 on HeLa cell. [antibody concentration 10 ug/ml]

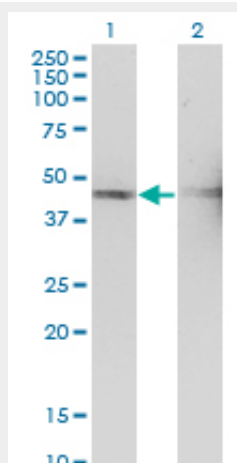


Antibody Reactive Against Recombinant Protein. Western Blot detection against Immunogen (36.74 KDa) .



TSSC1 monoclonal antibody (M01), clone 2H5 Western Blot analysis of TSSC1 expression in PC-12

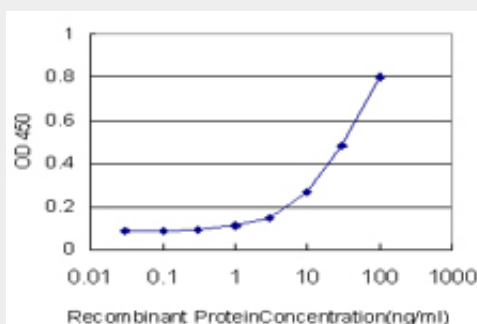
( (Cat # AT4382a )



Western Blot analysis of TSSC1 expression in transfected 293T cell line by TSSC1 monoclonal antibody (M01), clone 2H5.

Lane 1: TSSC1 transfected lysate (Predicted MW: 43.6 kDa).

Lane 2: Non-transfected lysate.



Detection limit for recombinant GST tagged TSSC1 is approximately 1ng/ml as a capture antibody.

### **TSSC1 Antibody (monoclonal) (M01) - Background**

This gene has been reported in PMID 9403053 as one of several tumor-suppressing subtransferable fragments located in the imprinted gene domain of 11p15.5, an important tumor-suppressor gene region. Alterations in this region have been associated with the Beckwith-Wiedemann syndrome, Wilms tumor, rhabdomyosarcoma, adrenocortical carcinoma, and lung, ovarian, and breast cancer. Alignment of this gene to genomic sequence data suggests that this gene resides on chromosome 2 rather than chromosome 11.

### **TSSC1 Antibody (monoclonal) (M01) - References**

Large-scale mapping of human protein-protein interactions by mass spectrometry. Ewing RM, et al. Mol Syst Biol, 2007. PMID 17353931. Diversification of transcriptional modulation: large-scale identification and characterization of putative alternative promoters of human genes. Kimura K, et al. Genome Res, 2006 Jan. PMID 16344560. Generation and annotation of the DNA sequences of human chromosomes 2 and 4. Hillier LW, et al. Nature, 2005 Apr 7. PMID 15815621. The status, quality, and expansion of the NIH full-length cDNA project: the Mammalian Gene Collection (MGC). Gerhard DS, et al. Genome Res, 2004 Oct. PMID 15489334. Generation and initial analysis of more than 15,000 full-length human and mouse cDNA sequences. Strausberg RL, et al. Proc Natl Acad Sci

U S A, 2002 Dec 24. PMID 12477932.