

**UBE2B Antibody (monoclonal) (M06)****Mouse monoclonal antibody raised against a partial recombinant UBE2B.****Catalog # AT4428a****Specification**

---

**UBE2B Antibody (monoclonal) (M06) - Product Information**

Application	WB, E
Primary Accession	<a href="#">P63146</a>
Other Accession	<a href="#">NM_003337</a>
Reactivity	Human
Host	mouse
Clonality	Monoclonal
Isotype	IgG2a Kappa
Calculated MW	17312

**UBE2B Antibody (monoclonal) (M06) - Additional Information****Gene ID** 7320**Other Names**

Ubiquitin-conjugating enzyme E2 B, RAD6 homolog B, HR6B, hHR6B, Ubiquitin carrier protein B, Ubiquitin-conjugating enzyme E2-17 kDa, Ubiquitin-protein ligase B, UBE2B, RAD6B

**Target/Specificity**

UBE2B (NP\_003328.1, 63 a.a. ~ 152 a.a) partial recombinant protein with GST tag. MW of the GST tag alone is 26 KDa.

**Dilution**

WB~~1:500~1000

**Format**

Clear, colorless solution in phosphate buffered saline, pH 7.2 .

**Storage**

Store at -20°C or lower. Aliquot to avoid repeated freezing and thawing.

**Precautions**

UBE2B Antibody (monoclonal) (M06) is for research use only and not for use in diagnostic or therapeutic procedures.

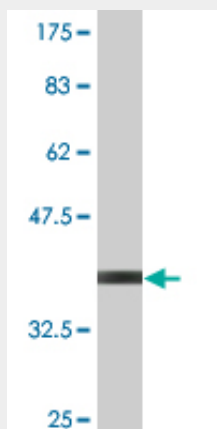
**UBE2B Antibody (monoclonal) (M06) - Protocols**

Provided below are standard protocols that you may find useful for product applications.

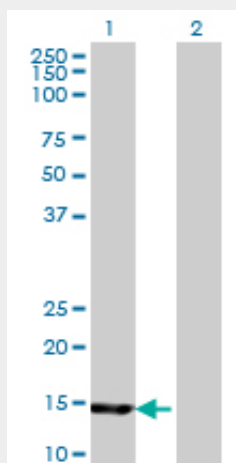
- [Western Blot](#)
- [Blocking Peptides](#)
- [Dot Blot](#)

- [Immunohistochemistry](#)
- [Immunofluorescence](#)
- [Immunoprecipitation](#)
- [Flow Cytometry](#)
- [Cell Culture](#)

#### UBE2B Antibody (monoclonal) (M06) - Images



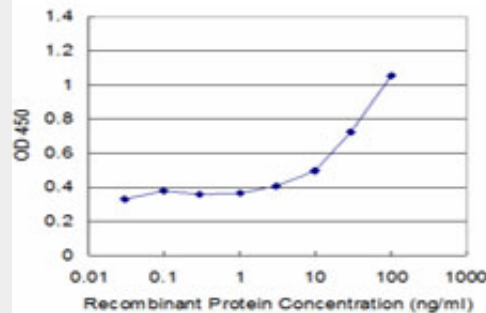
Antibody Reactive Against Recombinant Protein. Western Blot detection against Immunogen (35.64 kDa) .



Western Blot analysis of UBE2B expression in transfected 293T cell line by UBE2B monoclonal antibody (M06), clone 4C3.

Lane 1: UBE2B transfected lysate (17.3 kDa).

Lane 2: Non-transfected lysate.



Detection limit for recombinant GST tagged UBE2B is approximately 3ng/ml as a capture antibody.

### **UBE2B Antibody (monoclonal) (M06) - Background**

The modification of proteins with ubiquitin is an important cellular mechanism for targeting abnormal or short-lived proteins for degradation. Ubiquitination involves at least three classes of enzymes: ubiquitin-activating enzymes, or E1s, ubiquitin-conjugating enzymes, or E2s, and ubiquitin-protein ligases, or E3s. This gene encodes a member of the E2 ubiquitin-conjugating enzyme family. This enzyme is required for post-replicative DNA damage repair. Its protein sequence is 100% identical to the mouse, rat, and rabbit homologs, which indicates that this enzyme is highly conserved in eukaryotic evolution.

### **UBE2B Antibody (monoclonal) (M06) - References**

Evaluation of 172 candidate polymorphisms for association with oligozoospermia or azoospermia in a large cohort of men of European descent. Aston KI, et al. Hum Reprod, 2010 Jun. PMID 20378615. Direct characterization of E2-dependent target specificity and processivity using an artificial p27-linker-E2 ubiquitination system. Ryu KS, et al. BMB Rep, 2008 Dec 31. PMID 19123975. Novel variants in UBE2B gene and idiopathic male infertility. Suryavathi V, et al. J Androl, 2008 Sep-Oct. PMID 18497339. Novel UBE2B-associated polymorphisms in an azoospermic/oligozoospermic population. Huang I, et al. Asian J Androl, 2008 May. PMID 18385908. Recognition of forked and single-stranded DNA structures by human RAD18 complexed with RAD6B protein triggers its recruitment to stalled replication forks. Tsuji Y, et al. Genes Cells, 2008 Apr. PMID 18363965.