

UBE2J1 Antibody (monoclonal) (M01)**Mouse monoclonal antibody raised against a partial recombinant UBE2J1.****Catalog # AT4438a****Specification**

UBE2J1 Antibody (monoclonal) (M01) - Product Information

Application	WB, E
Primary Accession	O9Y385
Other Accession	NM_016021
Reactivity	Human
Host	Mouse
Clonality	Monoclonal
Isotype	IgG2a Kappa
Calculated MW	35199

UBE2J1 Antibody (monoclonal) (M01) - Additional Information**Gene ID** 51465**Other Names**

Ubiquitin-conjugating enzyme E2 J1, Non-canonical ubiquitin-conjugating enzyme 1, NCUBE-1, Yeast ubiquitin-conjugating enzyme UBC6 homolog E, HsUBC6e, UBE2J1, NCUBE1

Target/Specificity

UBE2J1 (NP_003329, 9 a.a. ~ 118 a.a) partial recombinant protein with GST tag. MW of the GST tag alone is 26 KDa.

Dilution

WB~~1:500~1000

Format

Clear, colorless solution in phosphate buffered saline, pH 7.2 .

Storage

Store at -20°C or lower. Aliquot to avoid repeated freezing and thawing.

Precautions

UBE2J1 Antibody (monoclonal) (M01) is for research use only and not for use in diagnostic or therapeutic procedures.

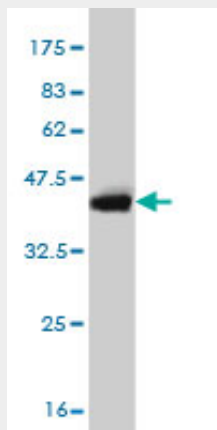
UBE2J1 Antibody (monoclonal) (M01) - Protocols

Provided below are standard protocols that you may find useful for product applications.

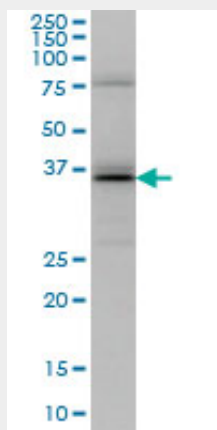
- [Western Blot](#)
- [Blocking Peptides](#)
- [Dot Blot](#)

- [Immunohistochemistry](#)
- [Immunofluorescence](#)
- [Immunoprecipitation](#)
- [Flow Cytometry](#)
- [Cell Culture](#)

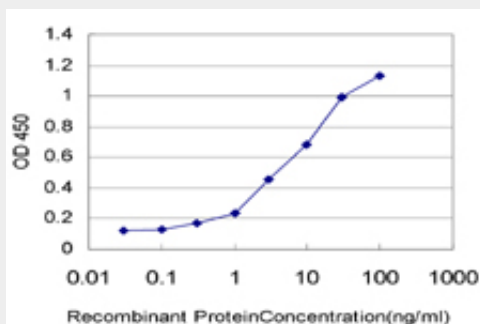
UBE2J1 Antibody (monoclonal) (M01) - Images



Antibody Reactive Against Recombinant Protein. Western Blot detection against Immunogen (37.84 kDa) .



UBE2J1 monoclonal antibody (M01), clone 6A12 Western Blot analysis of UBE2J1 expression in HeLa (Cat # AT4438a)



Detection limit for recombinant GST tagged UBE2J1 is approximately 0.1 ng/ml as a capture antibody.

UBE2J1 Antibody (monoclonal) (M01) - Background

The modification of proteins with ubiquitin is an important cellular mechanism for targeting abnormal or short-lived proteins for degradation. Ubiquitination involves at least three classes of enzymes: ubiquitin-activating enzymes, or E1s, ubiquitin-conjugating enzymes, or E2s, and ubiquitin-protein ligases, or E3s. This gene encodes a member of the E2 ubiquitin-conjugating enzyme family. This enzyme is located in the membrane of the endoplasmic reticulum (ER) and may contribute to quality control ER-associated degradation by the ubiquitin-proteasome system. [provided by RefSeq]