

**UBE2R2 Antibody (monoclonal) (M01)****Mouse monoclonal antibody raised against a full length recombinant UBE2R2.****Catalog # AT4443a****Specification**

---

**UBE2R2 Antibody (monoclonal) (M01) - Product Information**

|                   |                          |
|-------------------|--------------------------|
| Application       | IP, WB, E                |
| Primary Accession | <a href="#">Q712K3</a>   |
| Other Accession   | <a href="#">BC047584</a> |
| Reactivity        | Human                    |
| Host              | mouse                    |
| Clonality         | Monoclonal               |
| Isotype           | IgG2b kappa              |
| Calculated MW     | 27166                    |

**UBE2R2 Antibody (monoclonal) (M01) - Additional Information****Gene ID** 54926**Other Names**

Ubiquitin-conjugating enzyme E2 R2, Ubiquitin carrier protein R2, Ubiquitin-conjugating enzyme E2-CDC34B, Ubiquitin-protein ligase R2, UBE2R2, CDC34B, UBC3B

**Target/Specificity**

UBE2R2 (AAH47584, 1 a.a. ~ 238 a.a) full-length recombinant protein with GST tag. MW of the GST tag alone is 26 KDa.

**Dilution**

WB~~1:500~1000

**Format**

Clear, colorless solution in phosphate buffered saline, pH 7.2 .

**Storage**

Store at -20°C or lower. Aliquot to avoid repeated freezing and thawing.

**Precautions**

UBE2R2 Antibody (monoclonal) (M01) is for research use only and not for use in diagnostic or therapeutic procedures.

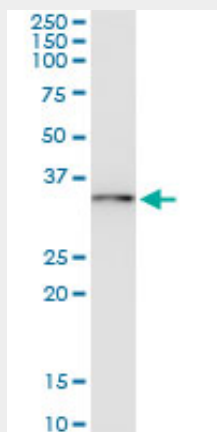
**UBE2R2 Antibody (monoclonal) (M01) - Protocols**

Provided below are standard protocols that you may find useful for product applications.

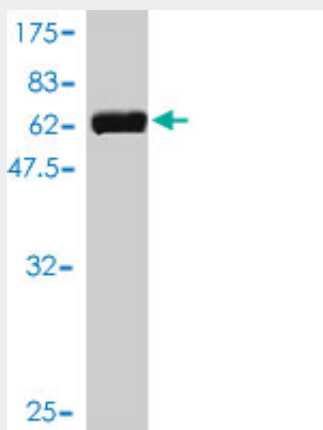
- [Western Blot](#)
- [Blocking Peptides](#)
- [Dot Blot](#)

- [Immunohistochemistry](#)
- [Immunofluorescence](#)
- [Immunoprecipitation](#)
- [Flow Cytometry](#)
- [Cell Culture](#)

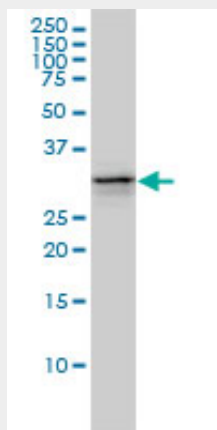
#### UBE2R2 Antibody (monoclonal) (M01) - Images



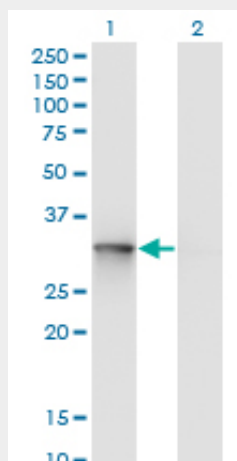
Immunoprecipitation of UBE2R2 transfected lysate using anti-UBE2R2 monoclonal antibody and Protein A Magnetic Bead ([U0007](#)), and immunoblotted with UBE2R2 monoclonal antibody.



Antibody Reactive Against Recombinant Protein. Western Blot detection against Immunogen (51.92 KDa) .



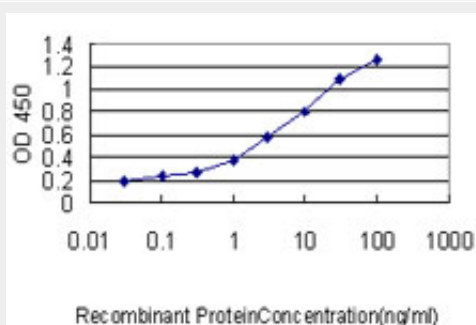
UBE2R2 monoclonal antibody (M01), clone 5E7 Western Blot analysis of UBE2R2 expression in Jurkat (Cat # AT4443a)



Western Blot analysis of UBE2R2 expression in transfected 293T cell line by UBE2R2 monoclonal antibody (M01), clone 5E7.

Lane 1: UBE2R2 transfected lysate (Predicted MW: 27.2 KDa).

Lane 2: Non-transfected lysate.



Detection limit for recombinant GST tagged UBE2R2 is approximately 0.1ng/ml as a capture antibody.

### UBE2R2 Antibody (monoclonal) (M01) - Background

Protein kinase CK2 is a ubiquitous and pleiotropic Ser/Thr protein kinase involved in cell growth and transformation. This gene encodes a protein similar to the E2 ubiquitin conjugating enzyme UBC3/CDC34. Studies suggest that CK2-dependent phosphorylation of this ubiquitin-conjugating enzyme functions by regulating beta-TrCP substrate recognition and induces its interaction with beta-TrCP, enhancing beta-catenin degradation.

### UBE2R2 Antibody (monoclonal) (M01) - References

Personalized smoking cessation: interactions between nicotine dose, dependence and quit-success genotype score. Rose JE, et al. Mol Med, 2010 Jul-Aug. PMID 20379614. Association of genetic variants with hemorrhagic stroke in Japanese individuals. Yoshida T, et al. Int J Mol Med, 2010 Apr. PMID 20198315. Assessment of a polymorphism of SDK1 with hypertension in Japanese Individuals. Oguri M, et al. Am J Hypertens, 2010 Jan. PMID 19851296. Collaborative genome-wide association analysis supports a role for ANK3 and CACNA1C in bipolar disorder. Ferreira MA, et al. Nat Genet, 2008 Sep. PMID 18711365. The status, quality, and expansion of the NIH full-length cDNA project: the Mammalian Gene Collection (MGC). Gerhard DS, et al. Genome Res, 2004 Oct. PMID 15489334.