

WFDC2 Antibody (monoclonal) (M01)

Mouse monoclonal antibody raised against a full length recombinant WFDC2.

Catalog # AT4538a

Specification

WFDC2 Antibody (monoclonal) (M01) - Product Information

Application	WB, E
Primary Accession	Q14508
Other Accession	BC046106
Reactivity	Human
Host	Mouse
Clonality	Monoclonal
Isotype	IgG2b kappa
Calculated MW	12993

WFDC2 Antibody (monoclonal) (M01) - Additional Information

Gene ID 10406

Other Names

WAP four-disulfide core domain protein 2, Epididymal secretory protein E4, Major epididymis-specific protein E4, Putative protease inhibitor WAP5, WFDC2, HE4, WAP5

Target/Specificity

WFDC2 (AAH46106.1, 31 a.a. ~ 124 a.a) full-length recombinant protein with GST tag. MW of the GST tag alone is 26 KDa.

Dilution

WB~~1:500~1000

Format

Clear, colorless solution in phosphate buffered saline, pH 7.2 .

Storage

Store at -20°C or lower. Aliquot to avoid repeated freezing and thawing.

Precautions

WFDC2 Antibody (monoclonal) (M01) is for research use only and not for use in diagnostic or therapeutic procedures.

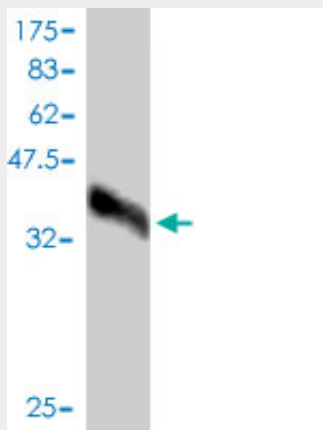
WFDC2 Antibody (monoclonal) (M01) - Protocols

Provided below are standard protocols that you may find useful for product applications.

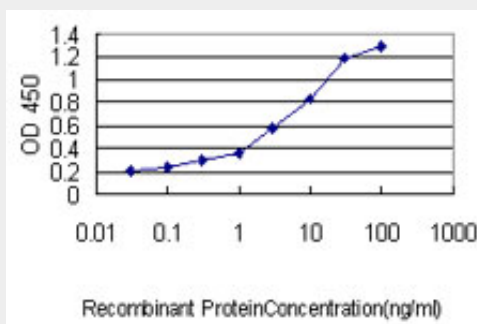
- [Western Blot](#)
- [Blocking Peptides](#)
- [Dot Blot](#)

- [Immunohistochemistry](#)
- [Immunofluorescence](#)
- [Immunoprecipitation](#)
- [Flow Cytometry](#)
- [Cell Culture](#)

WFDC2 Antibody (monoclonal) (M01) - Images



Antibody Reactive Against Recombinant Protein. Western Blot detection against Immunogen (36.08 kDa) .



Detection limit for recombinant GST tagged WFDC2 is approximately 0.03 ng/ml as a capture antibody.

WFDC2 Antibody (monoclonal) (M01) - Background

This gene encodes a protein that is a member of the WFDC domain family. The WFDC domain, or WAP Signature motif, contains eight cysteines forming four disulfide bonds at the core of the protein, and functions as a protease inhibitor in many family members. This gene is expressed in pulmonary epithelial cells, and was also found to be expressed in some ovarian cancers. The encoded protein is a small secretory protein, which may be involved in sperm maturation.

WFDC2 Antibody (monoclonal) (M01) - References

1. Detection of serum human epididymis secretory protein 4 in patients with ovarian cancer using a label-free biosensor based on localized surface plasmon resonance. Yuan J, Duan R, Yang H, Luo X, Xi M. Int J Nanomedicine. 2012;7:2921-8. Epub 2012 Jun 12.