

**WRB Antibody (monoclonal) (M04)****Mouse monoclonal antibody raised against a partial recombinant WRB.****Catalog # AT4542a****Specification**

---

**WRB Antibody (monoclonal) (M04) - Product Information**

|                   |                           |
|-------------------|---------------------------|
| Application       | WB, E                     |
| Primary Accession | <a href="#">O00258</a>    |
| Other Accession   | <a href="#">NM_004627</a> |
| Reactivity        | Human                     |
| Host              | mouse                     |
| Clonality         | Monoclonal                |
| Isotype           | IgG2a Kappa               |
| Calculated MW     | 19780                     |

**WRB Antibody (monoclonal) (M04) - Additional Information****Gene ID** 7485**Other Names**

Tail-anchored protein insertion receptor WRB, Congenital heart disease 5 protein, Tryptophan-rich basic protein, WRB, WRB, CHD5

**Target/Specificity**

WRB (NP\_004618, 29 a.a. ~ 101 a.a) partial recombinant protein with GST tag. MW of the GST tag alone is 26 KDa.

**Dilution**

WB~~1:500~1000

**Format**

Clear, colorless solution in phosphate buffered saline, pH 7.2 .

**Storage**

Store at -20°C or lower. Aliquot to avoid repeated freezing and thawing.

**Precautions**

WRB Antibody (monoclonal) (M04) is for research use only and not for use in diagnostic or therapeutic procedures.

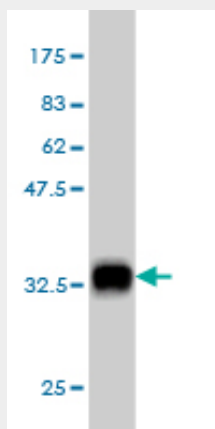
**WRB Antibody (monoclonal) (M04) - Protocols**

Provided below are standard protocols that you may find useful for product applications.

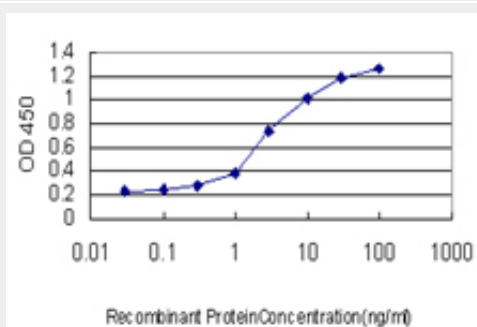
- [Western Blot](#)
- [Blocking Peptides](#)
- [Dot Blot](#)

- [Immunohistochemistry](#)
- [Immunofluorescence](#)
- [Immunoprecipitation](#)
- [Flow Cytometry](#)
- [Cell Culture](#)

### WRB Antibody (monoclonal) (M04) - Images



Antibody Reactive Against Recombinant Protein. Western Blot detection against Immunogen (33.77 kDa) .



Detection limit for recombinant GST tagged WRB is approximately 0.1 ng/ml as a capture antibody.

### WRB Antibody (monoclonal) (M04) - Background

This gene encodes a basic nuclear protein of unknown function. The gene is widely expressed in adult and fetal tissues. Since the region proposed to contain the gene(s) for congenital heart disease (CHD) in Down syndrome (DS) patients has been restricted to 21q22.2-22.3, this gene, which maps to 21q22.3, has a potential role in the pathogenesis of Down syndrome congenital heart disease. Alternatively spliced transcript variants encoding different isoforms have been found for this gene.

### WRB Antibody (monoclonal) (M04) - References

Replication of previous genome-wide association studies of bone mineral density in premenopausal American women. Ichikawa S, et al. J Bone Miner Res, 2010 Aug. PMID 20200978. Toward a confocal subcellular atlas of the human proteome. Barbe L, et al. Mol Cell Proteomics, 2008 Mar. PMID 18029348. The status, quality, and expansion of the NIH full-length cDNA project: the Mammalian Gene Collection (MGC). Gerhard DS, et al. Genome Res, 2004 Oct. PMID 15489334. Generation and initial analysis of more than 15,000 full-length human and mouse cDNA sequences. Strausberg RL, et al. Proc Natl Acad Sci U S A, 2002 Dec 24. PMID 12477932. Identification of a transcriptionally

active peroxisome proliferator-activated receptor alpha -interacting cofactor complex in rat liver and characterization of PRIC285 as a coactivator. Surapureddi S, et al. Proc Natl Acad Sci U S A, 2002 Sep 3. PMID 12189208.