

**ZBED1 Antibody (monoclonal) (M01)****Mouse monoclonal antibody raised against a partial recombinant ZBED1.****Catalog # AT4568a****Specification**

---

**ZBED1 Antibody (monoclonal) (M01) - Product Information**

Application	IF, WB, E
Primary Accession	<a href="#">O96006</a>
Other Accession	<a href="#">NM_004729</a>
Reactivity	Human
Host	mouse
Clonality	Monoclonal
Isotype	IgG2a Kappa
Calculated MW	78156

**ZBED1 Antibody (monoclonal) (M01) - Additional Information****Gene ID** 9189**Other Names**

Zinc finger BED domain-containing protein 1, Putative Ac-like transposable element, dREF homolog, ZBED1, ALTE, DREF, KIAA0785, TRAMP

**Target/Specificity**

ZBED1 (NP\_004720, 3 a.a. ~ 99 a.a) partial recombinant protein with GST tag. MW of the GST tag alone is 26 KDa.

**Dilution**

WB~~1:500~1000

**Format**

Clear, colorless solution in phosphate buffered saline, pH 7.2 .

**Storage**

Store at -20°C or lower. Aliquot to avoid repeated freezing and thawing.

**Precautions**

ZBED1 Antibody (monoclonal) (M01) is for research use only and not for use in diagnostic or therapeutic procedures.

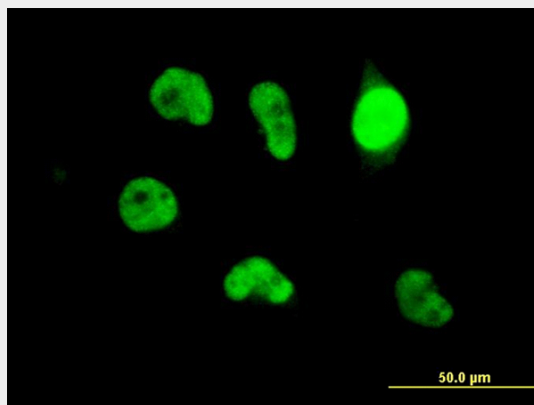
**ZBED1 Antibody (monoclonal) (M01) - Protocols**

Provided below are standard protocols that you may find useful for product applications.

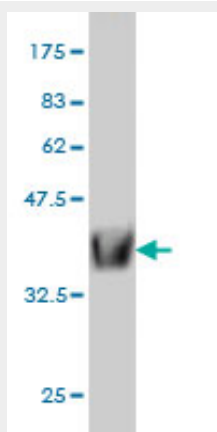
- [Western Blot](#)
- [Blocking Peptides](#)
- [Dot Blot](#)

- [Immunohistochemistry](#)
- [Immunofluorescence](#)
- [Immunoprecipitation](#)
- [Flow Cytometry](#)
- [Cell Culture](#)

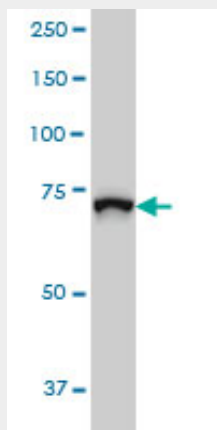
## ZBED1 Antibody (monoclonal) (M01) - Images



Immunofluorescence of monoclonal antibody to ZBED1 on HeLa cell. [antibody concentration 10 ug/ml]

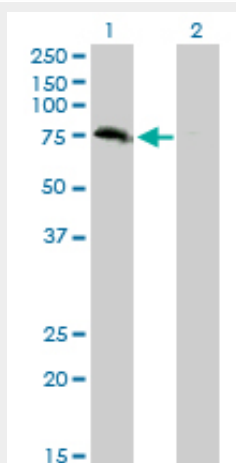


Antibody Reactive Against Recombinant Protein. Western Blot detection against Immunogen (36.41 kDa) .



ZBED1 monoclonal antibody (M01), clone 5G1 Western Blot analysis of ZBED1 expression in HeLa

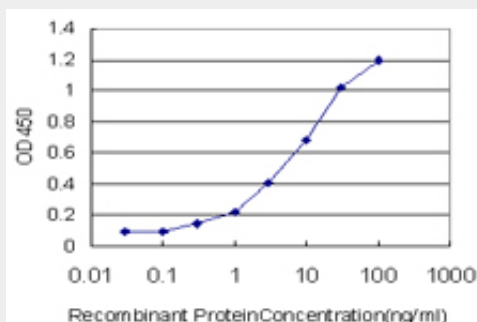
S3 NE ( (Cat # AT4568a )



Western Blot analysis of ZBED1 expression in transfected 293T cell line by ZBED1 monoclonal antibody (M01), clone 5G1.

Lane 1: ZBED1 transfected lysate(78.2 kDa).

Lane 2: Non-transfected lysate.



Detection limit for recombinant GST tagged ZBED1 is approximately 0.3ng/ml as a capture antibody.

### **ZBED1 Antibody (monoclonal) (M01) - Background**

This gene is located in the pseudoautosomal region 1 (PAR1) of X and Y chromosomes. It was earlier identified as a gene with similarity to Ac transposable elements, however, was found not to have transposase activity. Later studies show that this gene product is localized in the nucleus and functions as a transcription factor. It binds to DNA elements found in the promoter regions of several genes related to cell proliferation, such as histone H1, hence may have a role in regulating genes related to cell proliferation. Alternatively spliced transcript variants with different 5' untranslated region have been found for this gene.

### **ZBED1 Antibody (monoclonal) (M01) - References**

Shifted Transversal Design smart-pooling for high coverage interactome mapping. Xin X, et al. Genome Res, 2009 Jul. PMID 19447967. hDREF regulates cell proliferation and expression of ribosomal protein genes. Yamashita D, et al. Mol Cell Biol, 2007 Mar. PMID 17220279. Human DNA replication-related element binding factor (hDREF) self-association via hATC domain is necessary for its nuclear accumulation and DNA binding. Yamashita D, et al. J Biol Chem, 2007 Mar 9. PMID 17209048. A protein-protein interaction network for human inherited ataxias and disorders of Purkinje cell degeneration. Lim J, et al. Cell, 2006 May 19. PMID 16713569. Diversification of

transcriptional modulation: large-scale identification and characterization of putative alternative promoters of human genes. Kimura K, et al. Genome Res, 2006 Jan. PMID 16344560.