

Serum amyloid P-component(1-203) Antibody (Center)
Purified Rabbit Polyclonal Antibody (Pab)
Catalog # AW5005**Specification**

Serum amyloid P-component(1-203) Antibody (Center) - Product Information

Application	WB, IHC-P,E
Primary Accession	P02743
Reactivity	Human
Predicted	Mouse
Host	Rabbit
Clonality	polyclonal
Calculated MW	H=25;M=26 KDa
Isotype	Rabbit IgG
Antigen Source	HUMAN

Serum amyloid P-component(1-203) Antibody (Center) - Additional Information**Gene ID** 325**Antigen Region**
153-187**Other Names**

Serum amyloid P-component, SAP, 95S alpha-1-glycoprotein, Serum amyloid P-component(1-203), APCS, PTX2

DilutionWB~~1:1000
IHC-P~~1:25**Target/Specificity**

This Serum amyloid P-component(1-203) antibody is generated from a rabbit immunized with a KLH conjugated synthetic peptide between 153-187 amino acids from the Central region of human Serum amyloid P-component(1-203).

Format

Purified polyclonal antibody supplied in PBS with 0.09% (W/V) sodium azide. This antibody is purified through a protein A column, followed by peptide affinity purification.

Storage

Maintain refrigerated at 2-8°C for up to 2 weeks. For long term storage store at -20°C in small aliquots to prevent freeze-thaw cycles.

Precautions

Serum amyloid P-component(1-203) Antibody (Center) is for research use only and not for use in diagnostic or therapeutic procedures.

Serum amyloid P-component(1-203) Antibody (Center) - Protein Information

Name APCS

Synonyms PTX2

Function

Can interact with DNA and histones and may scavenge nuclear material released from damaged circulating cells. May also function as a calcium-dependent lectin.

Cellular Location

Secreted.

Tissue Location

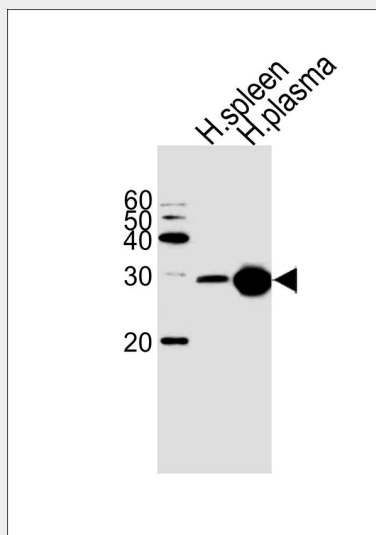
Found in serum and urine.

Serum amyloid P-component(1-203) Antibody (Center) - Protocols

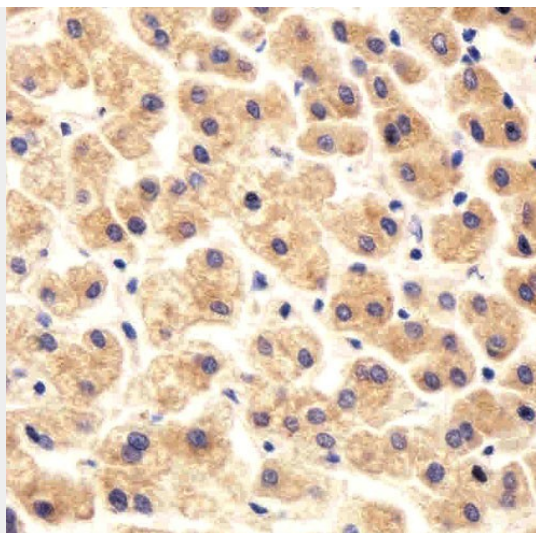
Provided below are standard protocols that you may find useful for product applications.

- [Western Blot](#)
- [Blocking Peptides](#)
- [Dot Blot](#)
- [Immunohistochemistry](#)
- [Immunofluorescence](#)
- [Immunoprecipitation](#)
- [Flow Cytometry](#)
- [Cell Culture](#)

Serum amyloid P-component(1-203) Antibody (Center) - Images



Western blot analysis of lysates from human spleen and plasma tissue lysate(from left to right), using Serum amyloid P-component(1-203) Antibody (Center)(Cat. #AW5005). AW5005 was diluted at 1:1000 at each lane. A goat anti-rabbit IgG H&L(HRP) at 1:5000 dilution was used as the secondary antibody.



Immunohistochemical analysis of paraffin-embedded H. liver section using Serum amyloid P-component(1-203) Antibody(Center)(Cat#AW5005). AW5005 was diluted at 1:25 dilution. A peroxidase-conjugated goat anti-rabbit IgG at 1:400 dilution was used as the secondary antibody, followed by DAB staining.

Serum amyloid P-component(1-203) Antibody (Center) - Background

Can interact with DNA and histones and may scavenge nuclear material released from damaged circulating cells. May also function as a calcium-dependent lectin.

Serum amyloid P-component(1-203) Antibody (Center) - References

Mantzouranis E.C.,et al.J. Biol. Chem. 260:7752-7756(1985).
Ohnishi S.,et al.J. Biochem. 100:849-858(1986).
Kalnine N.,et al.Submitted (MAY-2003) to the EMBL/GenBank/DDBJ databases.
Ebert L.,et al.Submitted (MAY-2004) to the EMBL/GenBank/DDBJ databases.
Gregory S.G.,et al.Nature 441:315-321(2006).