

NDUFB4 Antibody (N-term)
Purified Rabbit Polyclonal Antibody (Pab)
Catalog # AW5032

Specification

NDUFB4 Antibody (N-term) - Product Information

Application	IF, WB, IHC-P, FC,E
Primary Accession	O95168
Reactivity	Human
Host	Rabbit
Clonality	Polyclonal
Calculated MW	H=15,14 KDa
Isotype	Rabbit IgG
Antigen Source	HUMAN

NDUFB4 Antibody (N-term) - Additional Information

Gene ID 4710

Antigen Region
3-36

Other Names

NADH dehydrogenase [ubiquinone] 1 beta subcomplex subunit 4, Complex I-B15, CI-B15,
NADH-ubiquinone oxidoreductase B15 subunit, NDUFB4

Dilution

IF~~1:25
WB~~1:1000
IHC-P~~1:25
FC~~1:25

Target/Specificity

This NDUFB4 antibody is generated from a rabbit immunized with a KLH conjugated synthetic peptide between 3-36 amino acids from the N-terminal region of human NDUFB4.

Format

Purified polyclonal antibody supplied in PBS with 0.09% (W/V) sodium azide. This antibody is purified through a protein A column, followed by peptide affinity purification.

Storage

Maintain refrigerated at 2-8°C for up to 2 weeks. For long term storage store at -20°C in small aliquots to prevent freeze-thaw cycles.

Precautions

NDUFB4 Antibody (N-term) is for research use only and not for use in diagnostic or therapeutic procedures.

NDUFB4 Antibody (N-term) - Protein Information

Name NDUFB4**Function**

Accessory subunit of the mitochondrial membrane respiratory chain NADH dehydrogenase (Complex I), that is believed not to be involved in catalysis. Complex I functions in the transfer of electrons from NADH to the respiratory chain. The immediate electron acceptor for the enzyme is believed to be ubiquinone.

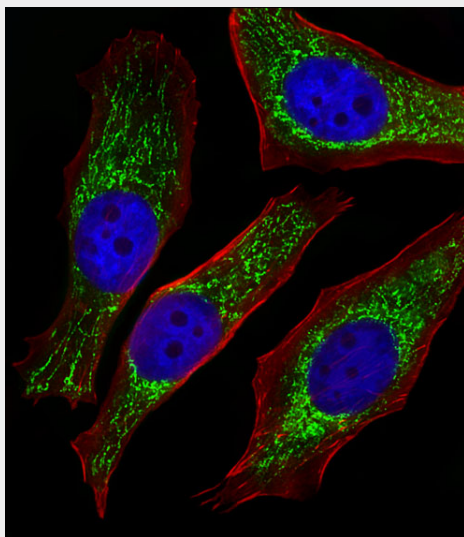
Cellular Location

Mitochondrion inner membrane; Single-pass membrane protein; Matrix side

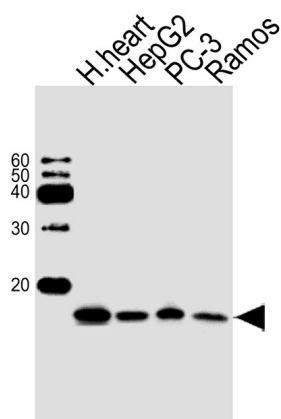
NDUFB4 Antibody (N-term) - Protocols

Provided below are standard protocols that you may find useful for product applications.

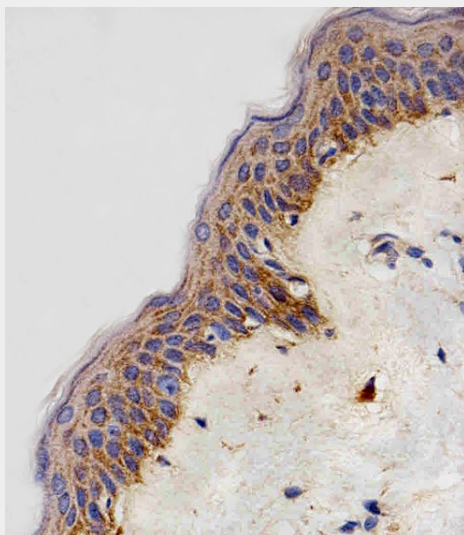
- [Western Blot](#)
- [Blocking Peptides](#)
- [Dot Blot](#)
- [Immunohistochemistry](#)
- [Immunofluorescence](#)
- [Immunoprecipitation](#)
- [Flow Cytometry](#)
- [Cell Culture](#)

NDUFB4 Antibody (N-term) - Images

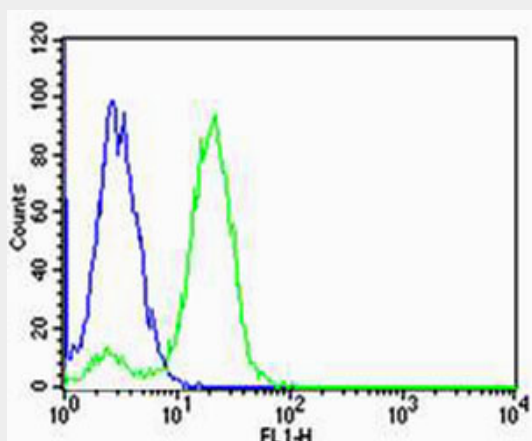
Fluorescent image of HeLa cells stained with NDUFB4 Antibody (N-term)(Cat#AW5032). AW5032 was diluted at 1:25 dilution. An Alexa Fluor 488-conjugated goat anti-rabbit IgG at 1:400 dilution was used as the secondary antibody (green). DAPI was used to stain the cell nuclear (blue). Cytoplasmic actin was counterstained with Alexa Fluor® 555 conjugated with Phalloidin (red).



Western blot analysis of lysates from human heart tissue, HepG2, PC-3, Ramos cell line (from left to right), using NDUFB4 Antibody (N-term)(Cat. #AW5032). AW5032 was diluted at 1:1000 at each lane. A goat anti-rabbit IgG H&L(HRP) at 1:10000 dilution was used as the secondary antibody.



Immunohistochemical analysis of paraffin-embedded H. skin section using NDUFB4 Antibody (N-term)(Cat#AW5032). AW5032 was diluted at 1:100 dilution. A peroxidase-conjugated goat anti-rabbit IgG at 1:400 dilution was used as the secondary antibody, followed by DAB staining.



Flow cytometric analysis of Hela cells using NDUFB4 Antibody (N-term)(green, Cat#AW5032) compared to an isotype control of rabbit IgG(blue). AW5032 was diluted at 1:25 dilution. An Alexa Fluor® 488 goat anti-rabbit IgG at 1:400 dilution was used as the secondary antibody.

NDUFB4 Antibody (N-term) - Background

Accessory subunit of the mitochondrial membrane respiratory chain NADH dehydrogenase (Complex I), that is believed not to be involved in catalysis. Complex I functions in the transfer of electrons from NADH to the respiratory chain. The immediate electron acceptor for the enzyme is believed to be ubiquinone.

NDUFB4 Antibody (N-term) - References

Loeffen J.L.C.M.,et al.Biochem. Biophys. Res. Commun. 253:415-422(1998).
Muzny D.M.,et al.Nature 440:1194-1198(2006).
Mural R.J.,et al.Submitted (SEP-2005) to the EMBL/GenBank/DDBJ databases.
Murray J.,et al.J. Biol. Chem. 278:13619-13622(2003).
Burkard T.R.,et al.BMC Syst. Biol. 5:17-17(2011).