

**BLVRB Antibody (C-term)**  
**Purified Rabbit Polyclonal Antibody (Pab)**  
**Catalog # AW5035****Specification**

---

**BLVRB Antibody (C-term) - Product Information**

Application	WB,E
Primary Accession	<a href="#">P30043</a>
Other Accession	<a href="#">Q923D2</a> , <a href="#">P52556</a>
Reactivity	Human, Mouse
Predicted	Bovine
Host	Rabbit
Clonality	polyclonal
Calculated MW	22119 Da
Isotype	Rabbit IgG
Antigen Source	HUMAN

**BLVRB Antibody (C-term) - Additional Information****Gene ID** 645**Antigen Region**  
161-175**Other Names**

Flavin reductase (NADPH), FR, Biliverdin reductase B, BVR-B, Biliverdin-IX beta-reductase, Green heme-binding protein, GHBP, NADPH-dependent diaphorase, NADPH-flavin reductase, FLR, BLVRB, FLR

**Dilution**

WB~~1:1000

**Target/Specificity**

This BLVRB antibody is generated from a rabbit immunized with a KLH conjugated synthetic peptide between 161-175 amino acids from the C-terminal region of human BLVRB.

**Format**

Purified polyclonal antibody supplied in PBS with 0.09% (W/V) sodium azide. This antibody is purified through a protein A column, followed by peptide affinity purification.

**Storage**

Maintain refrigerated at 2-8°C for up to 2 weeks. For long term storage store at -20°C in small aliquots to prevent freeze-thaw cycles.

**Precautions**

BLVRB Antibody (C-term) is for research use only and not for use in diagnostic or therapeutic procedures.

**BLVRB Antibody (C-term) - Protein Information**

**Name** BLVRB

**Synonyms** FLR

**Function**

Broad specificity oxidoreductase that catalyzes the NADPH- dependent reduction of a variety of flavins, such as riboflavin, FAD or FMN, biliverdins, methemoglobin and PQQ (pyrroloquinoline quinone). Contributes to heme catabolism and metabolizes linear tetrapyrroles. Can also reduce the complexed Fe(3+) iron to Fe(2+) in the presence of FMN and NADPH. In the liver, converts biliverdin to bilirubin.

**Cellular Location**

Cytoplasm.

**Tissue Location**

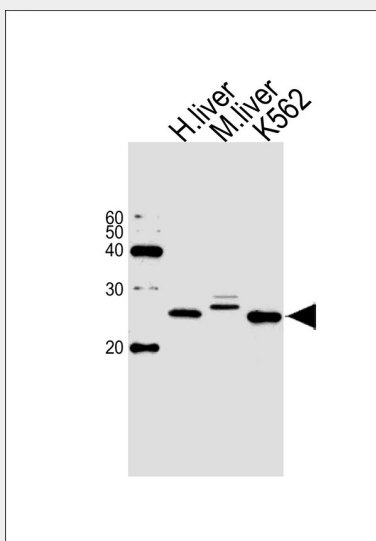
Predominantly expressed in liver and erythrocytes. At lower levels in heart, lung, adrenal gland and cerebrum

**BLVRB Antibody (C-term) - Protocols**

Provided below are standard protocols that you may find useful for product applications.

- [Western Blot](#)
- [Blocking Peptides](#)
- [Dot Blot](#)
- [Immunohistochemistry](#)
- [Immunofluorescence](#)
- [Immunoprecipitation](#)
- [Flow Cytometry](#)
- [Cell Culture](#)

**BLVRB Antibody (C-term) - Images**



Western blot analysis of lysates from human liver, mouse liver tissue and K562 cell line (from left to right), using BLVRB Antibody (C-term)(Cat. #AW5035). AW5035 was diluted at 1:1000 at each lane. A goat anti-rabbit IgG H&L(HRP) at 1:10000 dilution was used as the secondary antibody.

**BLVRB Antibody (C-term) - Background**

Broad specificity oxidoreductase that catalyzes the NADPH-dependent reduction of a variety of flavins, such as riboflavin, FAD or FMN, biliverdins, methemoglobin and PQQ (pyrroloquinoline quinone). Contributes to heme catabolism and metabolizes linear tetrapyrroles. Can also reduce the complexed Fe(3+) iron to Fe(2+) in the presence of FMN and NADPH. In the liver, converts biliverdin to bilirubin.

**BLVRB Antibody (C-term) - References**

Chikuba K.,et al.Biochem. Biophys. Res. Commun. 198:1170-1176(1994).  
Komuro A.,et al.Biol. Pharm. Bull. 19:796-804(1996).  
Ota T.,et al.Nat. Genet. 36:40-45(2004).  
Grimwood J.,et al.Nature 428:529-535(2004).  
Mural R.J.,et al.Submitted (JUL-2005) to the EMBL/GenBank/DDBJ databases.