

**RPS6KB2 Antibody**  
**Mouse Monoclonal Antibody (Mab)**  
**Catalog # AW5054****Specification**

---

**RPS6KB2 Antibody - Product Information**

Application	WB,E
Primary Accession	<a href="#">Q9UBS0</a>
Other Accession	<a href="#">NP_003943.2</a>
Reactivity	Human, Mouse
Host	Mouse
Clonality	Monoclonal
Calculated MW	H=53,17;M=53 KDa
Isotype	IgG1,K
Antigen Source	HUMAN

**RPS6KB2 Antibody - Additional Information****Gene ID** 6199**Antigen Region**  
1-470**Other Names**

RPS6KB2; STK14B; Ribosomal protein S6 kinase beta-2; 70 kDa ribosomal protein S6 kinase 2; S6 kinase-related kinase; Serine/threonine-protein kinase 14B; p70 ribosomal S6 kinase beta

**Dilution**

WB~~ 1:1000

**Target/Specificity**

This RPS6KB2 monoclonal antibody is generated from mouse immunized with RPS6KB2 recombinant protein.

**Format**

Purified monoclonal antibody supplied in PBS with 0.09% (W/V) sodium azide. This antibody is purified through a protein G column, followed by dialysis against PBS.

**Storage**

Maintain refrigerated at 2-8°C for up to 2 weeks. For long term storage store at -20°C in small aliquots to prevent freeze-thaw cycles.

**Precautions**

RPS6KB2 Antibody is for research use only and not for use in diagnostic or therapeutic procedures.

**RPS6KB2 Antibody - Protein Information****Name** RPS6KB2

**Synonyms** STK14B**Function**

Phosphorylates specifically ribosomal protein S6 (PubMed:<a href="http://www.uniprot.org/citations/29750193" target="\_blank">29750193</a>). Seems to act downstream of mTOR signaling in response to growth factors and nutrients to promote cell proliferation, cell growth and cell cycle progression in an alternative pathway regulated by MEAK7 (PubMed:<a href="http://www.uniprot.org/citations/29750193" target="\_blank">29750193</a>).

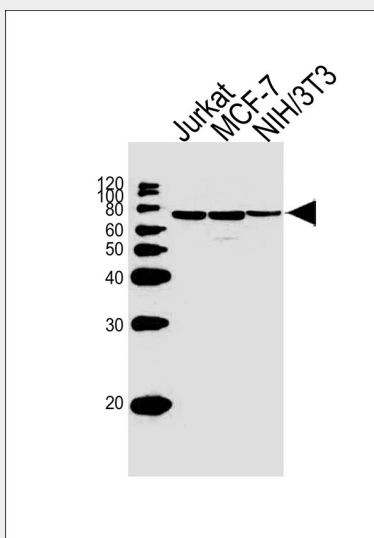
**Cellular Location**

Cytoplasm. Nucleus.

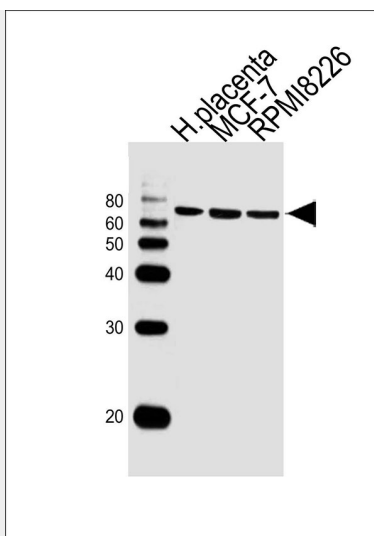
**RPS6KB2 Antibody - Protocols**

Provided below are standard protocols that you may find useful for product applications.

- [Western Blot](#)
- [Blocking Peptides](#)
- [Dot Blot](#)
- [Immunohistochemistry](#)
- [Immunofluorescence](#)
- [Immunoprecipitation](#)
- [Flow Cytometry](#)
- [Cell Culture](#)

**RPS6KB2 Antibody - Images**

Western blot analysis of lysates from Jurkat, MCF-7, NIH/3T3 cell line (from left to right), using RPS6KB2 Antibody (Cat. #AW5054). AW5054 was diluted at 1:1000 at each lane. A goat anti-mouse IgG H&L (HRP) at 1:10000 dilution was used as the secondary antibody. Lysates at 20 µg per lane.



Western blot analysis of lysates from human placenta tissue lysate, MCF-7, RPMI8226 cell line (from left to right), using RPS6KB2 Antibody (AW5054). AW5054 was diluted at 1:1000 at each lane. A goat anti-mouse IgG H&L (HRP) at 1:10000 dilution was used as the secondary antibody.

#### **RPS6KB2 Antibody - Background**

Phosphorylates specifically ribosomal protein S6.