

NFKBIA Antibody
Mouse Monoclonal Antibody (Mab)
Catalog # AW5063**Specification**

NFKBIA Antibody - Product Information

Application	WB,E
Primary Accession	P25963
Reactivity	Human, Mouse
Host	Mouse
Clonality	Monoclonal
Calculated MW	H=36;M=35 KDa
Isotype	IgG1, κ
Antigen Source	Human

NFKBIA Antibody - Additional Information**Gene ID** 4792**Antigen Region**
53-240**Other Names**

NFKBIA;IKBA; MAD3; NFKBI; NF-kappa-B inhibitor alpha; NF-kappa-B inhibitor alpha; I-kappa-B-alpha; NF-kappa-B inhibitor alpha; Major histocompatibility complex enhancer-binding protein MAD3

Dilution

WB~~1:1000

Target/Specificity

Purified His-tagged NFKBIA protein was used to produced this monoclonal antibody.

Format

Purified monoclonal antibody supplied in PBS with 0.09% (W/V) sodium azide. This antibody is purified through a protein G column, followed by dialysis against PBS.

Storage

Maintain refrigerated at 2-8°C for up to 2 weeks. For long term storage store at -20°C in small aliquots to prevent freeze-thaw cycles.

Precautions

NFKBIA Antibody is for research use only and not for use in diagnostic or therapeutic procedures.

NFKBIA Antibody - Protein Information**Name** NFKBIA

Synonyms IKBA, MAD3, NFKBI

Function

Inhibits the activity of dimeric NF-kappa-B/REL complexes by trapping REL (RELA/p65 and NFKB1/p50) dimers in the cytoplasm by masking their nuclear localization signals (PubMed:1493333, PubMed:7479976, PubMed:36651806). On cellular stimulation by immune and pro-inflammatory responses, becomes phosphorylated promoting ubiquitination and degradation, enabling the dimeric RELA to translocate to the nucleus and activate transcription (PubMed:7796813, PubMed:7628694, PubMed:7878466, PubMed:7479976).

Cellular Location

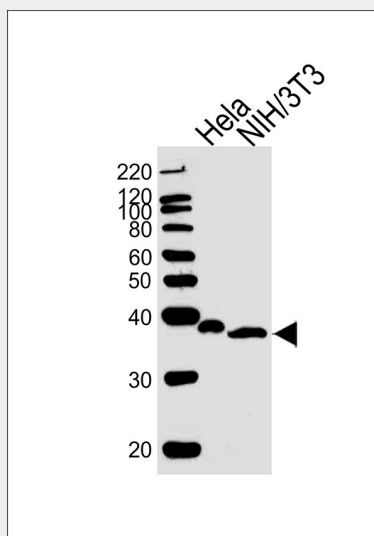
Cytoplasm. Nucleus. Note=Shuttles between the nucleus and the cytoplasm by a nuclear localization signal (NLS) and a CRM1-dependent nuclear export.

NFKBIA Antibody - Protocols

Provided below are standard protocols that you may find useful for product applications.

- [Western Blot](#)
- [Blocking Peptides](#)
- [Dot Blot](#)
- [Immunohistochemistry](#)
- [Immunofluorescence](#)
- [Immunoprecipitation](#)
- [Flow Cytometry](#)
- [Cell Culture](#)

NFKBIA Antibody - Images



Western blot analysis of lysates from HeLa, mouse NIH/3T3 cell line (from left to right), using NFKBIA Antibody (Cat. #AW5063). AW5063 was diluted at 1:1000 at each lane. A goat anti-mouse

IgG H&L(HRP) at 1:10000 dilution was used as the secondary antibody. Lysates at 20ug per lane.

NFKBIA Antibody - Background

Inhibits the activity of dimeric NF-kappa-B/REL complexes by trapping REL dimers in the cytoplasm through masking of their nuclear localization signals. On cellular stimulation by immune and proinflammatory responses, becomes phosphorylated promoting ubiquitination and degradation, enabling the dimeric RELA to translocate to the nucleus and activate transcription.

NFKBIA Antibody - References

Huxford T., et al. Cell 95:759-770(1998).
Cockman M.E., et al. Proc. Natl. Acad. Sci. U.S.A. 103:14767-14772(2006).
Haskill S., et al. Cell 65:1281-1289(1991).
Jungnickel B., et al. J. Exp. Med. 191:395-402(2000).
Liu B., et al. Submitted (APR-2001) to the EMBL/GenBank/DDBJ databases.