

**YWHAZ Antibody**  
**Purified Mouse Monoclonal Antibody (Mab)**  
**Catalog # AW5068****Specification**

---

**YWHAZ Antibody - Product Information**

Application	IF, WB,E
Primary Accession	<a href="#">P63104</a>
Other Accession	<a href="#">P63102</a> , <a href="#">P63101</a> , <a href="#">P63103</a> , <a href="#">P29361</a>
Reactivity	Human, Mouse, Rat
Predicted	Bovine, Sheep
Host	Mouse
Clonality	Monoclonal
Calculated MW	H=28;M=28;Rat=28 KDa
Isotype	IgG2b, $\kappa$
Antigen Source	HUMAN

**YWHAZ Antibody - Additional Information****Gene ID** 7534**Antigen Region**  
1-261**Other Names**  
14-3-3 protein zeta/delta, Protein kinase C inhibitor protein 1, KCIP-1, YWHAZ**Dilution**  
IF~~0.059027777777778  
WB~~1:1000**Target/Specificity**  
This YWHAZ antibody is generated from a mouse immunized with a recombinant protein from human YWHAZ.**Format**  
Purified monoclonal antibody supplied in PBS with 0.09% (W/V) sodium azide. This antibody is purified through a protein G column, followed by dialysis against PBS.**Storage**  
Maintain refrigerated at 2-8°C for up to 2 weeks. For long term storage store at -20°C in small aliquots to prevent freeze-thaw cycles.**Precautions**  
YWHAZ Antibody is for research use only and not for use in diagnostic or therapeutic procedures.**YWHAZ Antibody - Protein Information**

**Name** YWHAZ**Function**

Adapter protein implicated in the regulation of a large spectrum of both general and specialized signaling pathways (PubMed:<a href="http://www.uniprot.org/citations/14578935" target="\_blank">14578935</a>, PubMed:<a href="http://www.uniprot.org/citations/15071501" target="\_blank">15071501</a>, PubMed:<a href="http://www.uniprot.org/citations/15644438" target="\_blank">15644438</a>, PubMed:<a href="http://www.uniprot.org/citations/16376338" target="\_blank">16376338</a>, PubMed:<a href="http://www.uniprot.org/citations/16959763" target="\_blank">16959763</a>, PubMed:<a href="http://www.uniprot.org/citations/31024343" target="\_blank">31024343</a>, PubMed:<a href="http://www.uniprot.org/citations/9360956" target="\_blank">9360956</a>). Binds to a large number of partners, usually by recognition of a phosphoserine or phosphothreonine motif (PubMed:<a href="http://www.uniprot.org/citations/35662396" target="\_blank">35662396</a>). Binding generally results in the modulation of the activity of the binding partner (PubMed:<a href="http://www.uniprot.org/citations/35662396" target="\_blank">35662396</a>). Promotes cytosolic retention and inactivation of TFEB transcription factor by binding to phosphorylated TFEB (PubMed:<a href="http://www.uniprot.org/citations/35662396" target="\_blank">35662396</a>). Induces ARHGEF7 activity on RAC1 as well as lamellipodia and membrane ruffle formation (PubMed:<a href="http://www.uniprot.org/citations/16959763" target="\_blank">16959763</a>). In neurons, regulates spine maturation through the modulation of ARHGEF7 activity (By similarity).

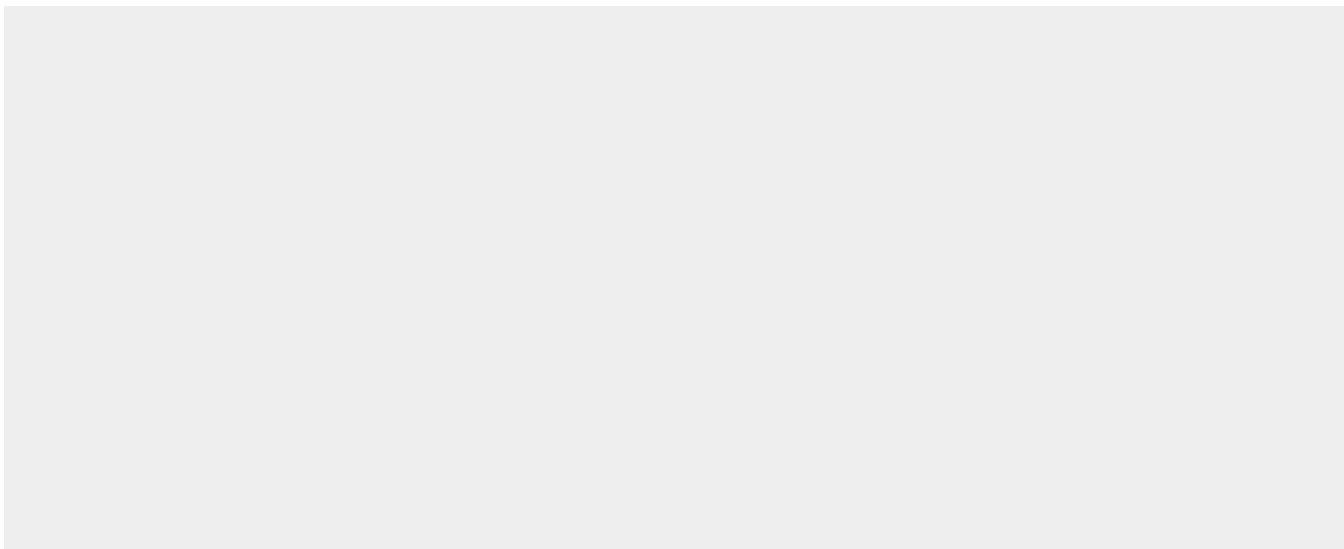
**Cellular Location**

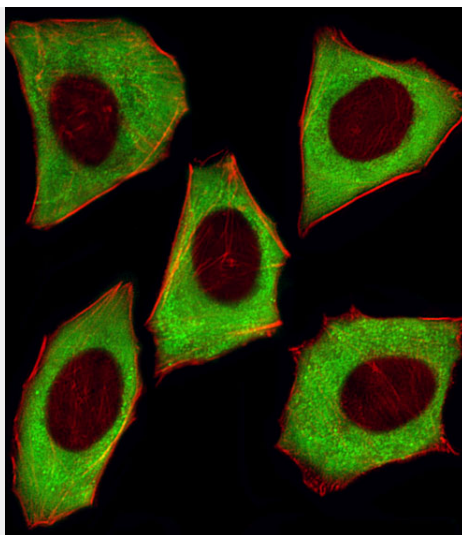
Cytoplasm. Melanosome. Note=Located to stage I to stage IV melanosomes.

**YWHAZ Antibody - Protocols**

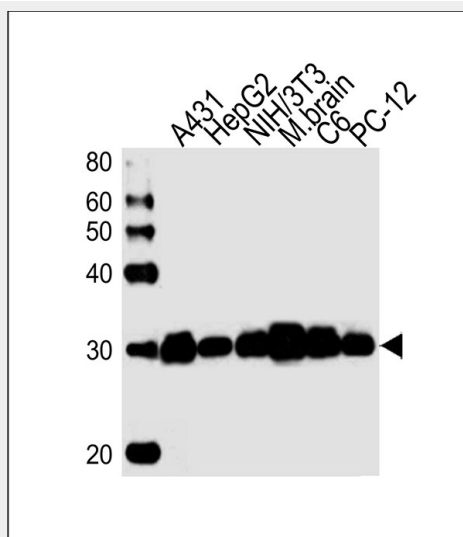
Provided below are standard protocols that you may find useful for product applications.

- [Western Blot](#)
- [Blocking Peptides](#)
- [Dot Blot](#)
- [Immunohistochemistry](#)
- [Immunofluorescence](#)
- [Immunoprecipitation](#)
- [Flow Cytometry](#)
- [Cell Culture](#)

**YWHAZ Antibody - Images**



Fluorescent image of U251 cells stained with YWHAZ Antibody (Cat#AW5068). AW5068 was diluted at 1:25 dilution. An Alexa Fluor 488-conjugated goat anti-mouse IgG at 1:400 dilution was used as the secondary antibody (green). Cytoplasmic actin was counterstained with Alexa Fluor® 555 conjugated with Phalloidin (red).



Western blot analysis of lysates from A431, HepG2, mouse NIH/3T3 cell line, mouse brain tissue, rat C6, PC-12 cell line (from left to right), using YWHAZ Antibody (Cat. #AW5068). AW5068 was diluted at 1:1000 at each lane. A goat anti-mouse IgG H&L (HRP) at 1:10000 dilution was used as the secondary antibody. Lysates at 20ug per lane.

### YWHAZ Antibody - Background

Adapter protein implicated in the regulation of a large spectrum of both general and specialized signaling pathways. Binds to a large number of partners, usually by recognition of a phosphoserine or phosphothreonine motif. Binding generally results in the modulation of the activity of the binding partner.

### YWHAZ Antibody - References

Zupan L.A., et al. J. Biol. Chem. 267:8707-8710 (1992).  
Seluja G.A., et al. Biochim. Biophys. Acta 1395:281-287 (1998).  
Ota T., et al. Nat. Genet. 36:40-45 (2004).

Mural R.J.,et al.Submitted (JUL-2005) to the EMBL/GenBank/DDBJ databases.  
Gevaert K.,et al.Nat. Biotechnol. 21:566-569(2003).