

HSF2 Antibody (Center)
Affinity Purified Rabbit Polyclonal Antibody (Pab)
Catalog # AW5101**Specification**

HSF2 Antibody (Center) - Product Information

Application	WB,E
Primary Accession	Q03933
Other Accession	NP_004497.1
Reactivity	Human
Predicted	Mouse
Host	Rabbit
Clonality	Polyclonal
Calculated MW	H=60,58;M=60,58 KDa
Isotype	Rabbit IgG
Antigen Source	HUMAN

HSF2 Antibody (Center) - Additional Information**Gene ID** 3298**Antigen Region**
216-245**Other Names**

HSF2; HSTF2; Heat shock factor protein 2; Heat shock transcription factor 2

Dilution

WB~~1:1000

Target/Specificity

This HSF2 antibody is generated from rabbits immunized with a KLH conjugated synthetic peptide between 216-245 amino acids from the Central region of human HSF2.

Format

Purified polyclonal antibody supplied in PBS with 0.09% (W/V) sodium azide. This antibody is purified through a protein A column, followed by peptide affinity purification.

Storage

Maintain refrigerated at 2-8°C for up to 2 weeks. For long term storage store at -20°C in small aliquots to prevent freeze-thaw cycles.

Precautions

HSF2 Antibody (Center) is for research use only and not for use in diagnostic or therapeutic procedures.

HSF2 Antibody (Center) - Protein Information

Name HSF2

Synonyms HSTF2

Function

DNA-binding protein that specifically binds heat shock promoter elements (HSE) and activates transcription. In higher eukaryotes, HSF is unable to bind to the HSE unless the cells are heat shocked.

Cellular Location

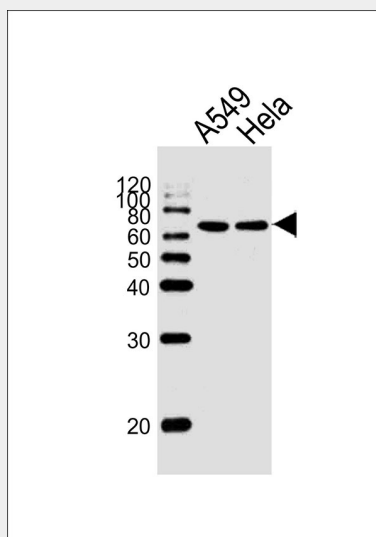
Cytoplasm. Nucleus. Note=Cytoplasmic during normal growth and moves to the nucleus upon activation

HSF2 Antibody (Center) - Protocols

Provided below are standard protocols that you may find useful for product applications.

- [Western Blot](#)
- [Blocking Peptides](#)
- [Dot Blot](#)
- [Immunohistochemistry](#)
- [Immunofluorescence](#)
- [Immunoprecipitation](#)
- [Flow Cytometry](#)
- [Cell Culture](#)

HSF2 Antibody (Center) - Images



Western blot analysis of lysates from A549, HeLa cell line (from left to right), using HSF2 Antibody (Center) (Cat. #AW5101). AW5101 was diluted at 1:1000 at each lane. A goat anti-rabbit IgG H&L (HRP) at 1:10000 dilution was used as the secondary antibody.

HSF2 Antibody (Center) - Background

HSF2, as well as the related gene HSF1, encodes a protein that binds specifically to the heat-shock element and has homology to HSFs of other species. Heat shock transcription factors activate

heat-shock response genes under conditions of heat or other stresses. Although the names HSF1 and HSF2 were chosen for historical reasons, these peptides should be referred to as heat-shock transcription factors.

HSF2 Antibody (Center) - References

Rose, J.E., et al. Mol. Med. 16 (7-8), 247-253 (2010) :
Xing, H., et al. Cell Stress Chaperones 15(3):301-308(2010)
Sandqvist, A., et al. Mol. Biol. Cell 20(5):1340-1347(2009)
Tateishi, Y., et al. J. Biol. Chem. 284(4):2435-2447(2009)
Vieira, A.R., et al. Genet. Med. 10(9):668-674(2008)