

RPLP0P6 Antibody (N-term)
Affinity Purified Rabbit Polyclonal Antibody (Pab)
Catalog # AW5116**Specification**

RPLP0P6 Antibody (N-term) - Product Information

Application	IF, WB, IHC-P,E
Primary Accession	Q8NHW5
Other Accession	P19945 , Q29214 , P14869 , P05388 , Q9PV90 , P47826 , Q95140
Reactivity	Human
Predicted	Bovine, Chicken, Zebrafish, Mouse, Pig, Rat
Host	Rabbit
Clonality	Polyclonal
Calculated MW	H=34 KDa
Isotype	Rabbit IgG
Antigen Source	Human

RPLP0P6 Antibody (N-term) - Additional Information**Antigen Region**

1-30

Other Names

RPLP0P6;60S acidic ribosomal protein P0-like

Dilution

IF~~1:25

WB~~1:1000

IHC-P~~1:25

Target/Specificity

This RPLP0P6 antibody is generated from rabbits immunized with a KLH conjugated synthetic peptide between 1-30 amino acids from the N-terminal region of human RPLP0P6.

Format

Purified polyclonal antibody supplied in PBS with 0.09% (W/V) sodium azide. This antibody is purified through a protein A column, followed by peptide affinity purification.

Storage

Maintain refrigerated at 2-8°C for up to 2 weeks. For long term storage store at -20°C in small aliquots to prevent freeze-thaw cycles.

Precautions

RPLP0P6 Antibody (N-term) is for research use only and not for use in diagnostic or therapeutic procedures.

RPLP0P6 Antibody (N-term) - Protein Information

Name RPLP0P6

Function

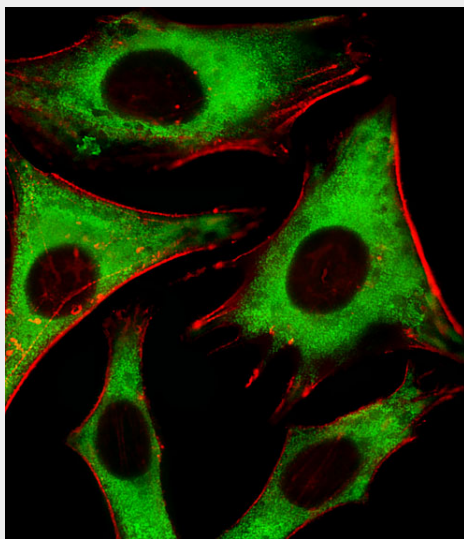
Ribosomal protein P0 is the functional equivalent of E.coli protein L10.

RPLP0P6 Antibody (N-term) - Protocols

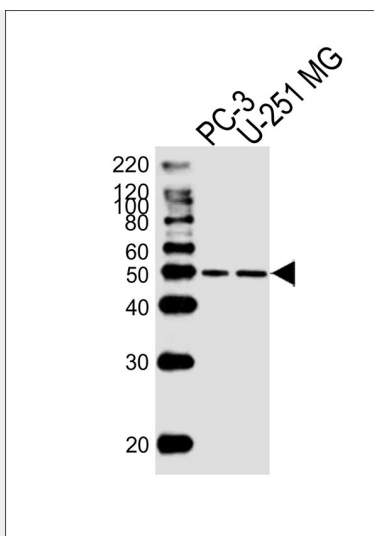
Provided below are standard protocols that you may find useful for product applications.

- [Western Blot](#)
- [Blocking Peptides](#)
- [Dot Blot](#)
- [Immunohistochemistry](#)
- [Immunofluorescence](#)
- [Immunoprecipitation](#)
- [Flow Cytometry](#)
- [Cell Culture](#)

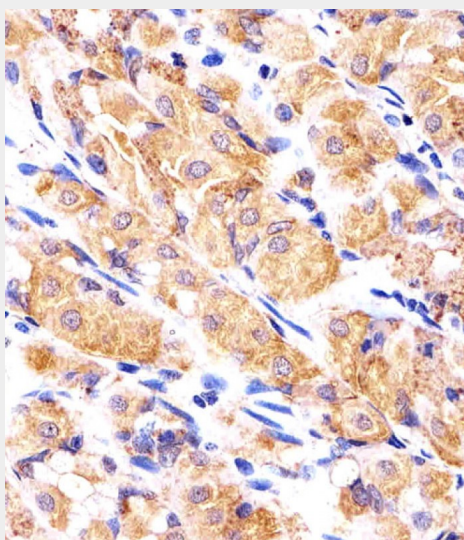
RPLP0P6 Antibody (N-term) - Images



Fluorescent image of HeLa cells stained with RPLP0P6 Antibody (N-term)(Cat#AW5116). AW5116 was diluted at 1:25 dilution. An Alexa Fluor 488-conjugated goat anti-rabbit IgG at 1:400 dilution was used as the secondary antibody (green). Cytoplasmic actin was counterstained with Alexa Fluor® 555 conjugated with Phalloidin (red).



Western blot analysis of lysates from PC-3, U-251 MG cell line (from left to right), using RPLP0P6 Antibody (N-term) (Cat. #AW5116). AW5116 was diluted at 1:1000 at each lane. A goat anti-rabbit IgG H&L (HRP) at 1:10000 dilution was used as the secondary antibody. Lysates at 20 µg per lane.



Immunohistochemical analysis of paraffin-embedded H. stomach section using RPLP0P6 Antibody (N-term) (Cat#AW5116). AW5116 was diluted at 1:25 dilution. A undiluted biotinylated goat polyvalent antibody was used as the secondary, followed by DAB staining.

RPLP0P6 Antibody (N-term) - Background

Ribosomal protein P0 is the functional equivalent of E.coli protein L10 (By similarity).

RPLP0P6 Antibody (N-term) - References

Gorry M.C., et al. Submitted (NOV-2001) to the EMBL/GenBank/DDBJ databases.
Li W.B., et al. Submitted (JUL-2004) to the EMBL/GenBank/DDBJ databases.
Mural R.J., et al. Submitted (SEP-2005) to the EMBL/GenBank/DDBJ databases.
Gauci S., et al. Anal. Chem. 81:4493-4501(2009).