

SIRPB1 Antibody (N-term)
Affinity Purified Rabbit Polyclonal Antibody (Pab)
Catalog # AW5117**Specification**

SIRPB1 Antibody (N-term) - Product Information

Application	WB, IHC-P,E
Primary Accession	Q5TFQ8
Reactivity	Human
Host	Rabbit
Clonality	Polyclonal
Calculated MW	H=43 KDa
Isotype	Rabbit IgG
Antigen Source	Human

SIRPB1 Antibody (N-term) - Additional Information**Gene ID** 10326**Antigen Region**
17-43**Other Names**
SIRPB1;Signal-regulatory protein beta-1 isoform 3**Dilution**
WB~~1:1000
IHC-P~~1:25**Target/Specificity**
This SIRPB1 antibody is generated from rabbits immunized with a KLH conjugated synthetic peptide between 17-43 amino acids from the N-terminal region of human SIRPB1.**Format**
Purified polyclonal antibody supplied in PBS with 0.09% (W/V) sodium azide. This antibody is purified through a protein A column, followed by peptide affinity purification.**Storage**
Maintain refrigerated at 2-8°C for up to 2 weeks. For long term storage store at -20°C in small aliquots to prevent freeze-thaw cycles.**Precautions**
SIRPB1 Antibody (N-term) is for research use only and not for use in diagnostic or therapeutic procedures.**SIRPB1 Antibody (N-term) - Protein Information****Name** SIRPB1

Function

Immunoglobulin-like cell surface receptor involved in the negative regulation of receptor tyrosine kinase-coupled signaling processes.

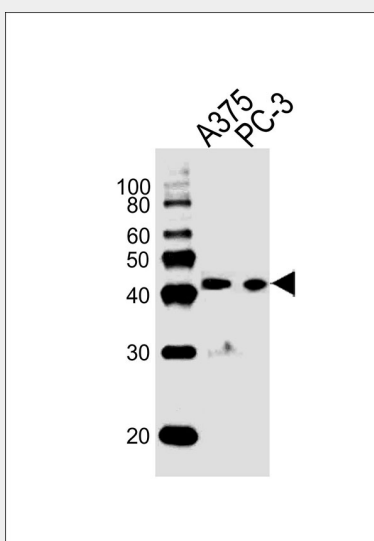
Cellular Location

Membrane; Single-pass type I membrane protein.

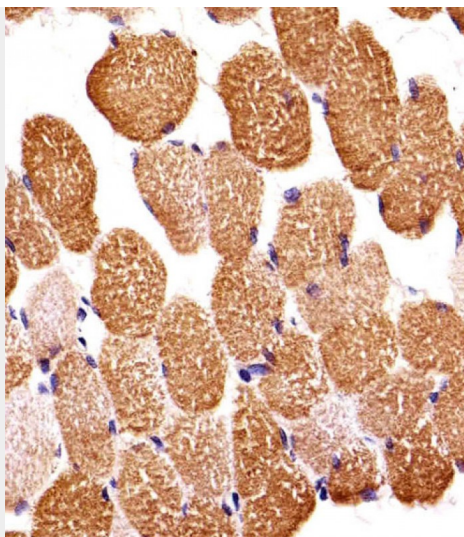
SIRPB1 Antibody (N-term) - Protocols

Provided below are standard protocols that you may find useful for product applications.

- [Western Blot](#)
- [Blocking Peptides](#)
- [Dot Blot](#)
- [Immunohistochemistry](#)
- [Immunofluorescence](#)
- [Immunoprecipitation](#)
- [Flow Cytometry](#)
- [Cell Culture](#)

SIRPB1 Antibody (N-term) - Images

Western blot analysis of lysates from A375,PC-3 cell line (from left to right), using SIRPB1Antibody(N-term)(Cat. #AW5117). AW5117 was diluted at 1:1000 at each lane. A goat anti-rabbit IgG H&L(HRP) at 1:10000 dilution was used as the secondary antibody.Lysates at 20ug per lane.



Immunohistochemical analysis of paraffin-embedded H. skeletal muscle section using SIRPB1 Antibody (N-term)(Cat#AW5117). AW5117 was diluted at 1:25 dilution. A undiluted biotinylated goat polyvalent antibody was used as the secondary, followed by DAB staining.

SIRPB1 Antibody (N-term) - Background

Immunoglobulin-like cell surface receptor involved in the negative regulation of receptor tyrosine kinase-coupled signaling processes (By similarity).

SIRPB1 Antibody (N-term) - References

Ota T., et al. Nat. Genet. 36:40-45(2004).
Bechtel S., et al. BMC Genomics 8:399-399(2007).
Deloukas P., et al. Nature 414:865-871(2001).
Hatherley D., et al. Mol. Cell 31:266-277(2008).