

**PDCL Antibody (N-term)**  
**Purified Rabbit Polyclonal Antibody (Pab)**  
**Catalog # AW5123**

**Specification**

---

**PDCL Antibody (N-term) - Product Information**

Application	WB, IHC-P,E
Primary Accession	<a href="#">Q13371</a>
Other Accession	<a href="#">Q63737</a> , <a href="#">Q9DBX2</a> , <a href="#">Q2HJA9</a>
Reactivity	Human
Predicted	Bovine, Mouse, Rat
Host	Rabbit
Clonality	Polyclonal
Calculated MW	H=34;M=34;Rat=34 KDa
Isotype	Rabbit IgG
Antigen Source	HUMAN

**PDCL Antibody (N-term) - Additional Information**

**Gene ID** 5082

**Antigen Region**  
1-30

**Other Names**  
Phosducin-like protein, PHLP, PDCL, PHLOP1, PhLP1

**Dilution**  
WB~~1:1000  
IHC-P~~1:25

**Target/Specificity**  
This PDCL antibody is generated from a rabbit immunized with a KLH conjugated synthetic peptide between 1-30 amino acids from the N-terminal region of human PDCL.

**Format**  
Purified polyclonal antibody supplied in PBS with 0.09% (W/V) sodium azide. This antibody is purified through a protein A column, followed by peptide affinity purification.

**Storage**  
Maintain refrigerated at 2-8°C for up to 2 weeks. For long term storage store at -20°C in small aliquots to prevent freeze-thaw cycles.

**Precautions**  
PDCL Antibody (N-term) is for research use only and not for use in diagnostic or therapeutic procedures.

**PDCL Antibody (N-term) - Protein Information**

**Name** PDCL

**Synonyms** PHLOP1, PhLP1

**Function**

Acts as a positive regulator of hedgehog signaling and regulates ciliary function. [Isoform 2]: Acts as a negative regulator of heterotrimeric G proteins assembly by trapping the preloaded G beta subunits inside the CCT chaperonin.

**Cellular Location**

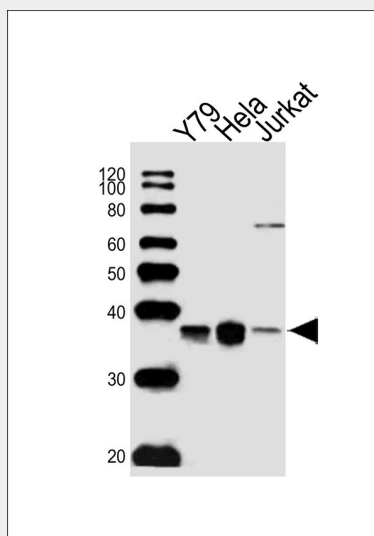
Cell projection, cilium {ECO:0000250|UniProtKB:Q9DBX2}

**PDCL Antibody (N-term) - Protocols**

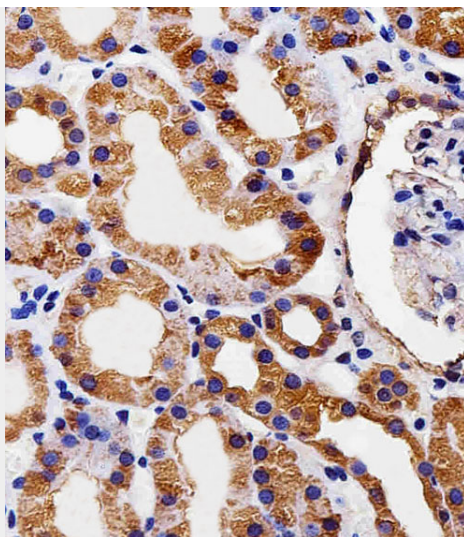
Provided below are standard protocols that you may find useful for product applications.

- [Western Blot](#)
- [Blocking Peptides](#)
- [Dot Blot](#)
- [Immunohistochemistry](#)
- [Immunofluorescence](#)
- [Immunoprecipitation](#)
- [Flow Cytometry](#)
- [Cell Culture](#)

**PDCL Antibody (N-term) - Images**



Western blot analysis of lysates from Y79, HeLa, Jurkat cell line (from left to right), using PDCL Antibody (N-term) (Cat. #AW5123). AW5123 was diluted at 1:1000 at each lane. A goat anti-rabbit IgG H&L (HRP) at 1:10000 dilution was used as the secondary antibody. Lysates at 20ug per lane.



Immunohistochemical analysis of paraffin-embedded H.kidney section using PDCL Antibody (N-term)(Cat#AW5123). AW5123 was diluted at 1:25 dilution. A peroxidase-conjugated goat anti-rabbit IgG at 1:400 dilution was used as the secondary antibody, followed by DAB staining.

#### **PDCL Antibody (N-term) - Background**

Isoform 1: Functions as a co-chaperone for CCT in the assembly of heterotrimeric G protein complexes, facilitates the assembly of both Gbeta-Ggamma and RGS-Gbeta5 heterodimers.

#### **PDCL Antibody (N-term) - References**

Lazarov M.E.,et al.Submitted (OCT-1997) to the EMBL/GenBank/DDBJ databases.  
Wiemann S.,et al.Genome Res. 11:422-435(2001).  
Ota T.,et al.Nat. Genet. 36:40-45(2004).  
Humphray S.J.,et al.Nature 429:369-374(2004).  
Mural R.J.,et al.Submitted (JUL-2005) to the EMBL/GenBank/DDBJ databases.