

**HLA-B Antibody (N-term)**  
**Purified Rabbit Polyclonal Antibody (Pab)**  
**Catalog # AW5124****Specification**

---

**HLA-B Antibody (N-term) - Product Information**

Application	WB, IHC-P,E
Primary Accession	<a href="#">P30464</a>
Other Accession	<a href="#">P30488</a> , <a href="#">P30486</a> , <a href="#">P30483</a> , <a href="#">P30479</a> , <a href="#">Q04826</a> , <a href="#">P30685</a> , <a href="#">P30466</a>
Reactivity	Human, Rat
Host	Rabbit
Clonality	Polyclonal
Calculated MW	H=40 KDa
Isotype	Rabbit IgG
Antigen Source	HUMAN

**HLA-B Antibody (N-term) - Additional Information****Antigen Region**  
25-107**Other Names**

HLA class I histocompatibility antigen, B-15 alpha chain, MHC class I antigen B\*15, HLA-B, HLAB

**Dilution**

WB~~1:1000

IHC-P~~1:25

**Target/Specificity**

This HLA-B antibody is generated from a rabbit immunized with a KLH conjugated synthetic peptide between 25-107 amino acids from the N-terminal region of human HLA-B.

**Format**

Purified polyclonal antibody supplied in PBS with 0.09% (W/V) sodium azide. This antibody is purified through a protein A column, followed by peptide affinity purification.

**Storage**

Maintain refrigerated at 2-8°C for up to 2 weeks. For long term storage store at -20°C in small aliquots to prevent freeze-thaw cycles.

**Precautions**

HLA-B Antibody (N-term) is for research use only and not for use in diagnostic or therapeutic procedures.

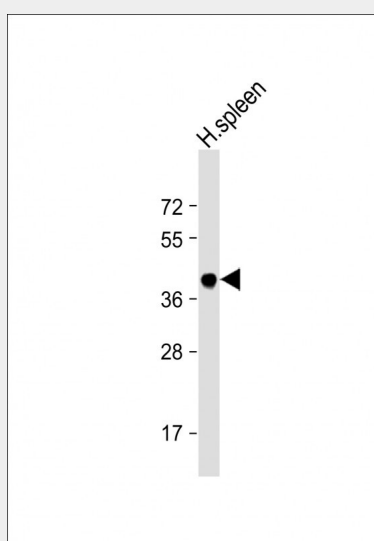
**HLA-B Antibody (N-term) - Protein Information**

## HLA-B Antibody (N-term) - Protocols

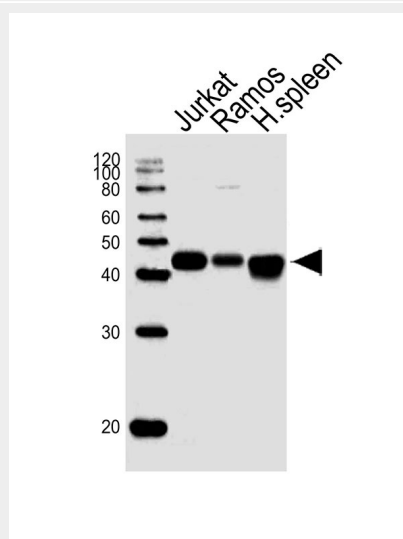
Provided below are standard protocols that you may find useful for product applications.

- [Western Blot](#)
- [Blocking Peptides](#)
- [Dot Blot](#)
- [Immunohistochemistry](#)
- [Immunofluorescence](#)
- [Immunoprecipitation](#)
- [Flow Cytometry](#)
- [Cell Culture](#)

## HLA-B Antibody (N-term) - Images

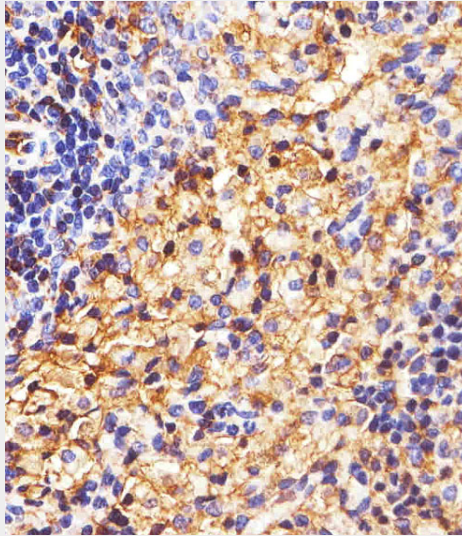


Anti-HLA-B Antibody (N-term) at 1:2000 dilution + Human spleen lysate Lysates/proteins at 20 µg per lane. Secondary Goat Anti-Rabbit IgG, (H+L), Peroxidase conjugated at 1/10000 dilution. Predicted band size : 40 kDa Blocking/Dilution buffer: 5% NFDM/TBST.

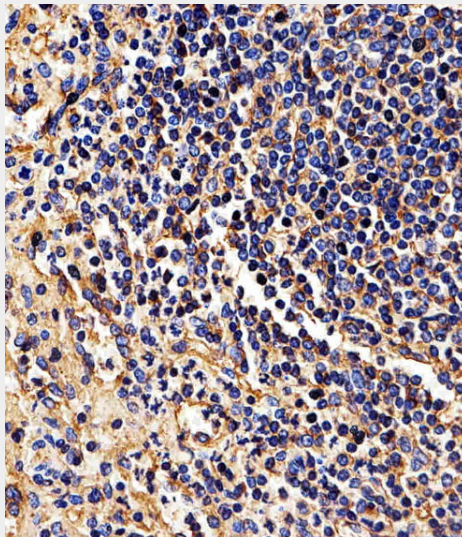


Western blot analysis of lysates from Jurkat,Ramos cell line,human spleen, rat spleen tissue lysate(from left to right), using HLA-B Antibody (N-term)(Cat. #AW5124). AW5124 was diluted at

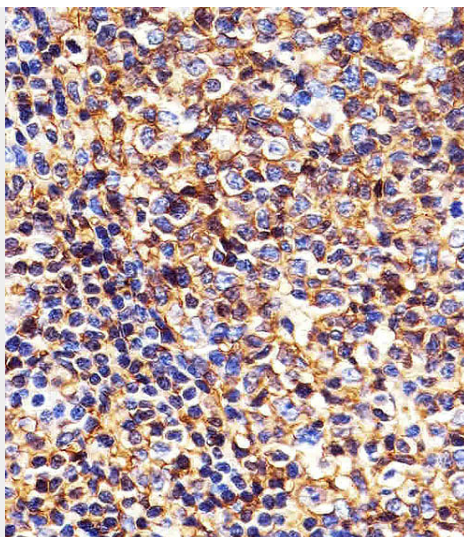
1:1000 at each lane. A goat anti-rabbit IgG H&L(HRP) at 1:10000 dilution was used as the secondary antibody. Lysates at 20ug per lane.



Immunohistochemical analysis of paraffin-embedded R. spleen section using HLA-B Antibody (N-term)(Cat#AW5124). AW5124 was diluted at 1:25 dilution. A peroxidase-conjugated goat anti-rabbit IgG at 1:400 dilution was used as the secondary antibody, followed by DAB staining.



Immunohistochemical analysis of paraffin-embedded H. spleen section using HLA-B Antibody (N-term)(Cat#AW5124). AW5124 was diluted at 1:25 dilution. A peroxidase-conjugated goat anti-rabbit IgG at 1:400 dilution was used as the secondary antibody, followed by DAB staining.



Immunohistochemical analysis of paraffin-embedded H. tonsil section using HLA-B Antibody (N-term)(Cat#AW5124). AW5124 was diluted at 1:25 dilution. A peroxidase-conjugated goat anti-rabbit IgG at 1:400 dilution was used as the secondary antibody, followed by DAB staining.

#### **HLA-B Antibody (N-term) - Background**

Involved in the presentation of foreign antigens to the immune system.

#### **HLA-B Antibody (N-term) - References**

Little A.-M.,et al.Tissue Antigens 38:186-190(1991).  
Hildebrand W.H.,et al.Tissue Antigens 43:209-218(1994).  
Lin L.,et al.Tissue Antigens 47:265-274(1996).  
Madrigal J.A.,et al.J. Immunol. 149:3411-3415(1992).  
Watkins D.I.,et al.Nature 357:329-333(1992).