

**HUMAN-SHB(Y268) Antibody**  
**Purified Rabbit Polyclonal Antibody (Pab)**  
**Catalog # AW5136****Specification**

---

**HUMAN-SHB(Y268) Antibody - Product Information**

|                   |                        |
|-------------------|------------------------|
| Application       | WB, FC,E               |
| Primary Accession | <a href="#">Q15464</a> |
| Reactivity        | Human                  |
| Predicted         | Mouse                  |
| Host              | Rabbit                 |
| Clonality         | polyclonal             |
| Calculated MW     | H=55,31;M=55 KDa       |
| Isotype           | Rabbit IgG             |
| Antigen Source    | HUMAN                  |

**HUMAN-SHB(Y268) Antibody - Additional Information****Gene ID** 6461**Antigen Region**  
250-290**Other Names**  
SH2 domain-containing adapter protein B, SHB**Dilution**  
WB~~1:1000  
FC~~1:25**Target/Specificity**  
This antibody is generated from a rabbit immunized with a KLH conjugated synthetic peptide between 250-290 amino acids from human.**Format**  
Purified polyclonal antibody supplied in PBS with 0.09% (W/V) sodium azide. This antibody is purified through a protein A column, followed by peptide affinity purification.**Storage**  
Maintain refrigerated at 2-8°C for up to 2 weeks. For long term storage store at -20°C in small aliquots to prevent freeze-thaw cycles.**Precautions**  
HUMAN-SHB(Y268) Antibody is for research use only and not for use in diagnostic or therapeutic procedures.**HUMAN-SHB(Y268) Antibody - Protein Information**

**Name SHB****Function**

Adapter protein which regulates several signal transduction cascades by linking activated receptors to downstream signaling components. May play a role in angiogenesis by regulating FGFR1, VEGFR2 and PDGFR signaling. May also play a role in T-cell antigen receptor/TCR signaling, interleukin-2 signaling, apoptosis and neuronal cells differentiation by mediating basic-FGF and NGF-induced signaling cascades. May also regulate IRS1 and IRS2 signaling in insulin- producing cells.

**Cellular Location**

Cytoplasm. Cell membrane; Peripheral membrane protein; Cytoplasmic side. Note=Associates with membrane lipid rafts upon TCR stimulation

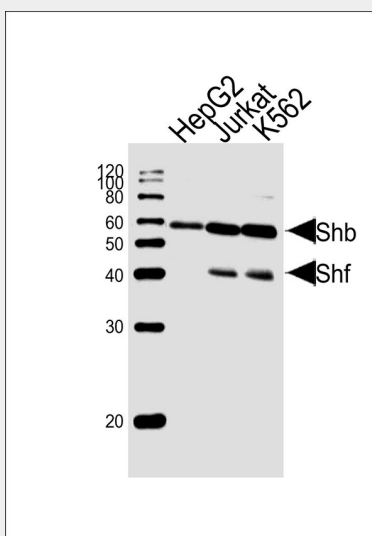
**Tissue Location**

Widely expressed..

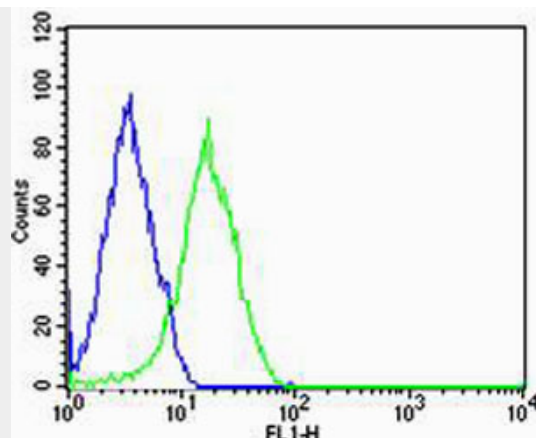
**HUMAN-SHB(Y268) Antibody - Protocols**

Provided below are standard protocols that you may find useful for product applications.

- [Western Blot](#)
- [Blocking Peptides](#)
- [Dot Blot](#)
- [Immunohistochemistry](#)
- [Immunofluorescence](#)
- [Immunoprecipitation](#)
- [Flow Cytometry](#)
- [Cell Culture](#)

**HUMAN-SHB(Y268) Antibody - Images**

Western blot analysis of lysates from HepG2, Jurkat, K562 cell line (from left to right), using Phospho-HUMAN-SHB(Y268).ctrl(Cat. #AW5136). AW5136 was diluted at 1:1000 at each lane. A goat anti-rabbit IgG H&L(HRP) at 1:10000 dilution was used as the secondary antibody. Lysates at 20ug per lane.



Flow cytometric analysis of HepG2 cells using Phospho-HUMAN-SHB(Y268). ctrl(green, Cat#AW5136) compared to an isotype control of rabbit IgG(blue). AW5136 was diluted at 1:25 dilution. An Alexa Fluor® 488 goat anti-rabbit IgG at 1:400 dilution was used as the secondary antibody.

#### **HUMAN-SHB(Y268) Antibody - Background**

Adapter protein which regulates several signal transduction cascades by linking activated receptors to downstream signaling components. May play a role in angiogenesis by regulating FGFR1, VEGFR2 and PDGFR signaling. May also play a role in T-cell antigen receptor/TCR signaling, interleukin-2 signaling, apoptosis and neuronal cells differentiation by mediating basic- FGF and NGF-induced signaling cascades. May also regulate IRS1 and IRS2 signaling in insulin-producing cells.

#### **HUMAN-SHB(Y268) Antibody - References**

Welsh M.,et al.Oncogene 9:19-27(1994).  
Humphray S.J.,et al.Nature 429:369-374(2004).  
Mural R.J.,et al.Submitted (SEP-2005) to the EMBL/GenBank/DDBJ databases.  
Karlsson T.,et al.Oncogene 10:1475-1483(1995).  
Karlsson T.,et al.Oncogene 13:955-961(1996).