

AGR2 Antibody (Center)
Affinity Purified Rabbit Polyclonal Antibody (Pab)
Catalog # AW5165**Specification**

AGR2 Antibody (Center) - Product Information

Application	WB,E
Primary Accession	O95994
Other Accession	O88312 , Q5RZ65
Reactivity	Human
Predicted	Zebrafish, Mouse
Host	Rabbit
Clonality	Polyclonal
Calculated MW	H=20;M=20;Z=20 KDa
Isotype	Rabbit IgG
Antigen Source	HUMAN

AGR2 Antibody (Center) - Additional Information**Gene ID** 10551**Antigen Region**
95-124**Other Names**

AGR2; AG2; Anterior gradient protein 2 homolog; HPC8; Secreted cement gland protein XAG-2 homolog

Dilution

WB~~ 1:1000

Target/Specificity

This AGR2 antibody is generated from rabbits immunized with a KLH conjugated synthetic peptide between 95-124 amino acids from the Central region of human AGR2.

Format

Purified polyclonal antibody supplied in PBS with 0.09% (W/V) sodium azide. This antibody is purified through a protein A column, followed by peptide affinity purification.

Storage

Maintain refrigerated at 2-8°C for up to 2 weeks. For long term storage store at -20°C in small aliquots to prevent freeze-thaw cycles.

Precautions

AGR2 Antibody (Center) is for research use only and not for use in diagnostic or therapeutic procedures.

AGR2 Antibody (Center) - Protein Information

Name AGR2

Synonyms AG2

Function

Required for MUC2 post-transcriptional synthesis and secretion. May play a role in the production of mucus by intestinal cells (By similarity). Proto-oncogene that may play a role in cell migration, cell differentiation and cell growth. Promotes cell adhesion (PubMed:23274113).

Cellular Location

Secreted. Endoplasmic reticulum {ECO:0000250|UniProtKB:O88312}

Tissue Location

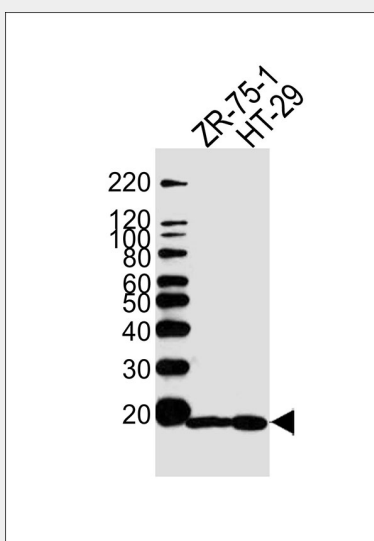
Expressed strongly in trachea, lung, stomach, colon, prostate and small intestine. Expressed weakly in pituitary gland, salivary gland, mammary gland, bladder, appendix, ovary, fetal lung, uterus, pancreas, kidney, fetal kidney, testis, placenta, thyroid gland and in estrogen receptor (ER)-positive breast cancer cell lines

AGR2 Antibody (Center) - Protocols

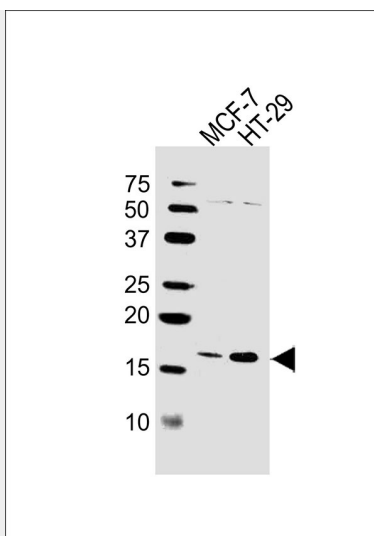
Provided below are standard protocols that you may find useful for product applications.

- [Western Blot](#)
- [Blocking Peptides](#)
- [Dot Blot](#)
- [Immunohistochemistry](#)
- [Immunofluorescence](#)
- [Immunoprecipitation](#)
- [Flow Cytometry](#)
- [Cell Culture](#)

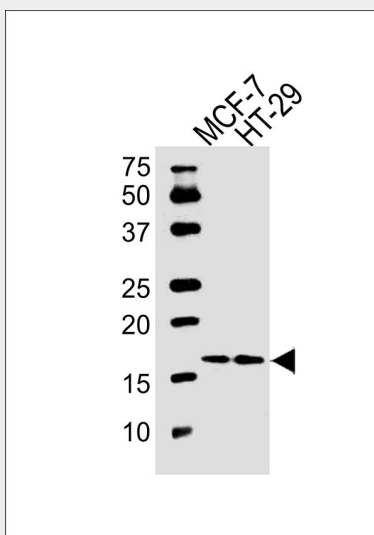
AGR2 Antibody (Center) - Images



Western blot analysis of lysates from ZR-75-1, HT29 cell line (from left to right), using AGR2 Antibody (Center)(Cat. #AW5165). AW5165 was diluted at 1:1000 at each lane. A goat anti-rabbit IgG H&L(HRP) at 1:5000 dilution was used as the secondary antibody.



Western blot analysis of lysates from MCF-7, HT-29 cell line (from left to right), using AGR2 Antibody (Center) (Cat. #AW5165). AW5165 was diluted at 1:1000 at each lane. A goat anti-rabbit IgG H&L (HRP) at 1:10000 dilution was used as the secondary antibody.



Western blot analysis of lysates from MCF-7, HT-29 cell line (from left to right), using AGR2 Antibody (Center) (Cat #AW5165). AW5165 was diluted at 1:1000 at each lane. A goat anti-rabbit IgG H&L (HRP) at 1:10000 dilution was used as the secondary antibody.

AGR2 Antibody (Center) - Background

Anterior gradient 2 (AGR2) is known as a cancer cell marker specifically up-regulated in response to depletion of serum and oxygen. AGR2 has been identified as a tumor marker in primary and secondary cancer lesions, and as a marker for detection of circulating tumor cells (CTCs). Elevated levels of AGR2 are known to increase the metastatic potential of cancer cells, but conditions leading to increased expression of AGR2 are not well understood.

AGR2 Antibody (Center) - References

Zweitzig, D.R., Mol. Cell. Biochem. 306 (1-2), 255-260 (2007) Zhang, Y., Prostate Cancer Prostatic Dis. 10 (3), 293-300 (2007) Fletcher, G.C., Br. J. Cancer 88 (4), 579-585 (2003)