

**R Cebpd Antibody (Center)**  
**Affinity Purified Rabbit Polyclonal Antibody (Pab)**  
**Catalog # AW5199**

**Specification**

---

**R Cebpd Antibody (Center) - Product Information**

Application	WB,E
Primary Accession	<a href="#">Q03484</a>
Reactivity	Human, Mouse, Rat
Host	Rabbit
Clonality	Polyclonal
Calculated MW	H=28,M=29,Rat=29 KDa
Isotype	Rabbit IgG
Antigen Source	Rat

**R Cebpd Antibody (Center) - Additional Information**

**Gene ID** 25695

**Antigen Region**  
161-189

**Other Names**

Cebpd;Celf; CCAAT/enhancer-binding protein delta; CCAAT/enhancer-binding protein delta;  
Transcription factor CELF

**Dilution**

WB~~1:1000

**Target/Specificity**

This Rat Cebpd antibody is generated from rabbits immunized with a KLH conjugated synthetic peptide between 161-189 amino acids from the Central region of rat Cebpd.

**Format**

Purified polyclonal antibody supplied in PBS with 0.09% (W/V) sodium azide. This antibody is purified through a protein A column, followed by peptide affinity purification.

**Storage**

Maintain refrigerated at 2-8°C for up to 2 weeks. For long term storage store at -20°C in small aliquots to prevent freeze-thaw cycles.

**Precautions**

R Cebpd Antibody (Center) is for research use only and not for use in diagnostic or therapeutic procedures.

**R Cebpd Antibody (Center) - Protein Information**

**Name** Cebpd

**Synonyms** Celf**Function**

Transcription activator that recognizes two different DNA motifs: the CCAAT homology common to many promoters and the enhanced core homology common to many enhancers (PubMed:<a href="http://www.uniprot.org/citations/1714459" target="\_blank">1714459</a>). Important transcription factor regulating the expression of genes involved in immune and inflammatory responses. Transcriptional activator that enhances IL6 transcription alone and as heterodimer with CEBPB (By similarity).

**Cellular Location**

Nucleus.

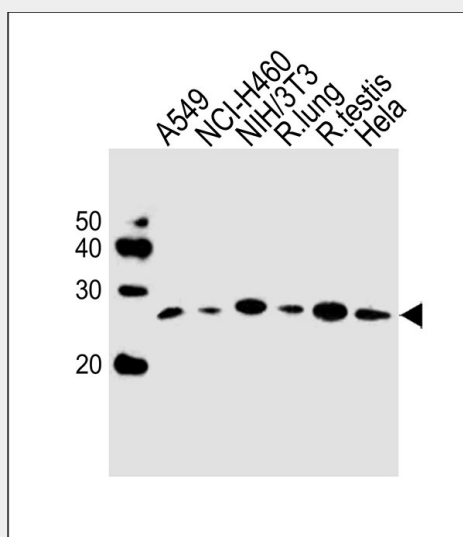
**Tissue Location**

Ubiquitously expressed.

**R Cebpd Antibody (Center) - Protocols**

Provided below are standard protocols that you may find useful for product applications.

- [Western Blot](#)
- [Blocking Peptides](#)
- [Dot Blot](#)
- [Immunohistochemistry](#)
- [Immunofluorescence](#)
- [Immunoprecipitation](#)
- [Flow Cytometry](#)
- [Cell Culture](#)

**R Cebpd Antibody (Center) - Images**

Western blot analysis of lysates from A549,NCI-H460,mouse NIH/3T3 cell line,rat lung,rat testis tissue,Hela cell line (from left to right), using (RAT) Cebpd Antibody (Center)(Cat. #AW5199). AW5199 was diluted at 1:1000 at each lane. A goat anti-rabbit IgG H&L(HRP) at 1:10000 dilution was used as the secondary antibody.Lysates at 20ug per lane.

**R Cebpd Antibody (Center) - Background**

C/EBP is a DNA-binding protein that recognizes two different motifs: the CCAAT homology common to many promoters and the enhanced core homology common to many enhancers. Important transcriptional activator in the regulation of genes involved in immune and inflammatory responses, may play an important role in the regulation of the several genes associated with activation and/or differentiation of macrophages (By similarity).

#### **R Cebpd Antibody (Center) - References**

Kageyama R., et al. J. Biol. Chem. 266:15525-15531(1991).